

À des fins de recherche uniquement

Anticorps Polyclonal de lapin anti- PKC Delta



Numéro de catalogue: 14188-1-AP

Phare

7 Publications

Informations de base

Numéro de catalogue:

14188-1-AP

Taille:

150ul, Concentration: 350 µg/ml by
Nanodrop;

Hôte:

Lapin

Isotype:

IgG

Immunogen Catalog Number:

AG5473

Numéro d'acquisition GenBank:

BC043350

Identification du gène (NCBI):

5580

Nom complet:

protein kinase C, delta

MW calculé

78 kDa

MW observés:

70-80 kDa

Méthode de purification:

Purification par affinité contre
l'antigène

Dilutions recommandées:

WB 1:1000-1:4000

IP 0.5-4.0 ug for IP and 1:1000-1:4000
for WB

IF 1:50-1:500

Applications

Applications testées:

IF, IP, WB, ELISA

Demandes citées:

IHC, WB

Spécificité de l'espèce:

Humain, rat, souris

Espèces citées:

Humain, rat, souris

Contrôles positifs:

WB : cellules NIH/3T3, cellules C6, tissu cérébral de
rat, tissu cérébral de souris

IP : tissu cérébral de souris,

IF : Saos-2 cells, cellules A431, cellules HeLa

Informations générales

PKC Delta is a member of the protein kinase C family of serine- and threonine-specific protein kinases. The encoded protein is activated by diacylglycerol and is both a tumor suppressor and a positive regulator of cell cycle progression. Also, this protein can positively or negatively regulate apoptosis. Defects in this gene are a cause of autoimmune lymphoproliferative syndrom.

Publications notables

Autrice	Pubmed ID	Journal	Application
Chunmin Ma	34861246	Chem Biol Interact	WB
Lingli Sun	35302141	Food Funct	WB,IHC
Hongyi Zhou	31185001	JCI Insight	WB

Stockage

Stockage:

Stocker à -20°C. Stable pendant un an après l'expédition.

Tampon de stockage:

PBS avec azoture de sodium à 0,02 % et glycérol à 50 % pH 7,3

L'aliquotage n'est pas nécessaire pour le stockage à -20C

*** Les 20ul contiennent 0,1% de BSA.

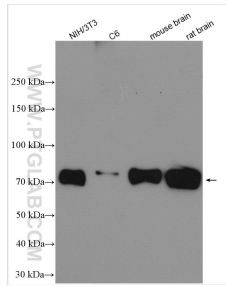
For technical support and original validation data for this product please contact:

T: 1 (888) 4PTGLAB (1-888-478-4522) (toll free
in USA), or 1(312) 455-8498 (outside USA)

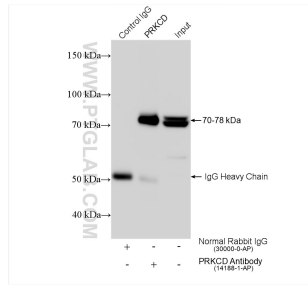
E: proteintech@ptglab.com
W: ptglab.com

This product is exclusively available under Proteintech Group brand and is not available to purchase from any other manufacturer.

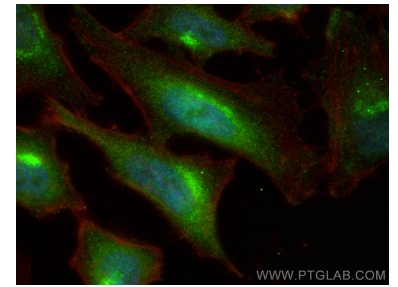
Données de validation sélectionnées



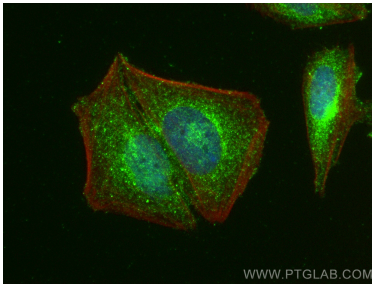
Various lysates were subjected to SDS PAGE followed by western blot with 14188-1-AP (PKC Delta antibody) at dilution of 1:2000 incubated at room temperature for 1.5 hours.



IP result of anti-PKC Delta (IP:14188-1-AP, 4ug; Detection:14188-1-AP 1:2000) with mouse brain tissue lysate 1280 ug.



Immunofluorescent analysis of (4% PFA) fixed HeLa cells using PKC Delta antibody (14188-1-AP) at dilution of 1:200 and CoraLite@488-Conjugated AffiniPure Goat Anti-Rabbit IgG(H+L), CL594-phalloidin (red).



Immunofluorescent analysis of (4% PFA) fixed Saos-2 cells using PKC Delta antibody (14188-1-AP) at dilution of 1:200 and CoraLite@488-Conjugated AffiniPure Goat Anti-Rabbit IgG(H+L), CL594-phalloidin (red).