

À des fins de recherche uniquement

Anticorps Polyclonal de lapin anti-SLC27A6



Numéro de catalogue: 14197-1-AP

Informations de base

Numéro de catalogue: 14197-1-AP	Numéro d'acquisition GenBank: BC041945	Méthode de purification: Purification par affinité contre l'antigène
Taille: 150ul , Concentration: 400 µg/ml by Nanodrop;	Identification du gène (NCBI): 28965	Dilutions recommandées: WB 1:500-1:2000
Hôte: Lapin	Nom complet: solute carrier family 27 (fatty acid transporter), member 6	
Isotype: IgG	MW calculé: 70 kDa	
Immunogen Catalog Number: AG5400	MW observés: 70 kDa	

Applications

Applications testées:
WB, ELISA

Spécificité de l'espèce:
Humain, souris

Contrôles positifs:

WB : cellules MCF-7, tissu hépatique de souris, tissu rénal de souris, tissu testiculaire de souris

Informations générales

SLC27A6, also known as FATP6, ACSVL2, FACVL2, belongs to the ATP-dependent AMP-binding enzyme family. SLC27A6 mediates the import of long-chain fatty acids (LCFA) into the cell by facilitating their transport at the plasma membrane (PMID: 12556534). SLC27A6 plays a pivotal role in regulating available LCFA substrates from exogenous sources in tissues undergoing high levels of beta-oxidation. SLC27A6 is strongly expressed in heart and localizes to cardiac myocytes. SLC27A6 is expressed at moderate levels in placenta, testis, and adrenal glands (PMID: 12556534).

Stockage

Stockage:
Stocker à -20°C. Stable pendant un an après l'expédition.

Tampon de stockage:
PBS avec azoture de sodium à 0,02 % et glycérol à 50 % pH 7,3
L'aliquotage n'est pas nécessaire pour le stockage à -20C

*** Les 20ul contiennent 0,1% de BSA.

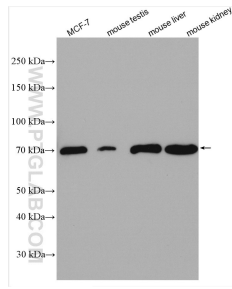
For technical support and original validation data for this product please contact:

T: 1 (888) 4PTGLAB (1-888-478-4522) (toll free in USA), or 1(312) 455-8498 (outside USA)

E: proteintech@ptglab.com
W: ptglab.com

This product is exclusively available under Proteintech Group brand and is not available to purchase from any other manufacturer.

Données de validation sélectionnées



Various lysates were subjected to SDS PAGE followed by western blot with 14197-1-AP (SLC27A6 antibody) at dilution of 1:1000 incubated at room temperature for 1.5 hours.