

À des fins de recherche uniquement

Anticorps Polyclonal de lapin anti-GFI1



Numéro de catalogue: 14198-1-AP

1 Publications

Informations de base

Numéro de catalogue:

14198-1-AP

Taille:

150ul, Concentration: 400 µg/ml by Nanodrop and 253 µg/ml by Bradford method using BSA as the standard;

Hôte:

Lapin

Isotype:

IgG

Immunogen Catalog Number:

AG5401

Numéro d'acquisition GenBank:

BC032751

Identification du gène (NCBI):

2672

Nom complet:

growth factor independent 1 transcription repressor

MW calculé

45 kDa

MW observés:

62-66 kDa

Méthode de purification:

Purification par affinité contre l'antigène

Dilutions recommandées:

WB 1:500-1:1000

Applications

Applications testées:

WB, ELISA

Demandes citées:

IHC

Spécificité de l'espèce:

Humain, rat, souris

Espèces citées:

souris

Contrôles positifs:

WB : cellules K-562, cellules HL-60, cellules PC-3, cellules Raji, RAW264.7, tissu de thymus de souris

Informations générales

GFI1 is a transcriptional repressor that is transiently induced during T-cell differentiation. It has critical roles in enhancing T helper-2 (Th2) cell expansion and in repressing induction of Th17 and CD103-positive inducible regulatory T (Treg) cells [PMID: 19188499]. GFI1 transcriptional regulator oncoprotein plays a crucial role in hematopoietic, inner ear, and pulmonary neuroendocrine cell development and governs cell processes as diverse as self-renewal of hematopoietic stem cells, proliferation, apoptosis, differentiation, cell fate specification, and oncogenesis [PMID: 18805794]. The calculated molecular weight of GFI1 protein is about 45 kDa, but the modification of ubiquitinated GFI1 protein is about 62-66 kDa [PMID: 12721361].

Publications notables

Autrice	Pubmed ID	Journal	Application
Joshua E Burda	35614216	Nature	IHC

Stockage

Stockage:

Stocker à -20°C. Stable pendant un an après l'expédition.

Tampon de stockage:

PBS avec azoture de sodium à 0,02 % et glycérol à 50 % pH 7,3

L'aliquotage n'est pas nécessaire pour le stockage à -20°C

*** Les 20ul contiennent 0,1% de BSA.

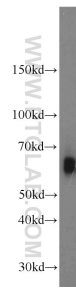
For technical support and original validation data for this product please contact:

T: 1 (888) 4PTGLAB (1-888-478-4522) (toll free in USA), or 1(312) 455-8498 (outside USA)

E: proteintech@ptglab.com
W: ptglab.com

This product is exclusively available under Proteintech Group brand and is not available to purchase from any other manufacturer.

Données de validation sélectionnées



K-562 cells were subjected to SDS PAGE followed by western blot with 14198-1-AP (GFI1 antibody) at dilution of 1:500 incubated at room temperature for 1.5 hours.