

À des fins de recherche uniquement

Anticorps Polyclonal de lapin anti-MREG



Numéro de catalogue: 14207-1-AP

Informations de base

Numéro de catalogue:
14207-1-AP

Taille:
150ul, Concentration: 400 µg/ml by
Nanodrop and 233 µg/ml by Bradford
method using BSA as the standard;

Hôte:
Lapin

Isotype:
IgG

Immunogen Catalog Number:
AG5416

Numéro d'acquisition GenBank:
BC032747

Identification du gène (NCBI):
55686

Nom complet:
melanoregulin

MW calculé
25kDa

MW observés:
26 kDa

Méthode de purification:
Purification par affinité contre
l'antigène

Dilutions recommandées:
WB 1:1000-1:5000

Applications

Applications testées:
WB, ELISA

Spécificité de l'espèce:
Humain

Contrôles positifs:

WB : cellules MCF-7,

Informations générales

MREG, also known as DSU, belongs to the melanoregulin family. MREG is a small, highly charged protein thought to play a role in organelle biogenesis due to its effect on pigmentation in dilute, ashen, and leaden mutant mice (PMID: 19240024). Additionally, MREG probably functions as a cargo-recognition protein that couples cytoplasmic vesicles to the transport machinery. MREG has 2 isoforms with the molecular weights of 25 and 26 kDa.

Stockage

Stockage:

Stocker à -20°C. Stable pendant un an après l'expédition.

Tampon de stockage:

PBS avec azoture de sodium à 0,02 % et glycérol à 50 % pH 7,3

L'aliquotage n'est pas nécessaire pour le stockage à -20C

*** Les 20ul contiennent 0,1% de BSA.

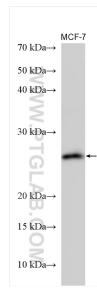
For technical support and original validation data for this product please contact:

T: 1 (888) 4PTGLAB (1-888-478-4522) (toll free
in USA), or 1(312) 455-8498 (outside USA)

E: proteintech@ptglab.com
W: ptglab.com

This product is exclusively available under Proteintech Group brand and is not available to purchase from any other manufacturer.

Données de validation sélectionnées



MCF-7 cells were subjected to SDS PAGE followed by western blot with 14207-1-AP (MREG antibody) at dilution of 1:2500 incubated at room temperature for 1.5 hours.