

À des fins de recherche uniquement

# Anticorps Polyclonal de lapin anti-TRIM24



Numéro de catalogue: 14208-1-AP

Phare

37 Publications

## Informations de base

Numéro de catalogue:

14208-1-AP

Taille:

150ul, Concentration: 800 µg/ml by Nanodrop and 400 µg/ml by Bradford method using BSA as the standard;

Hôte:

Lapin

Isotype:

IgG

Immunogen Catalog Number:

AG5417

Numéro d'acquisition GenBank:

BC028689

Identification du gène (NCBI):

8805

Nom complet:

tripartite motif-containing 24

MW calculé

117 kDa

MW observés:

117 kDa

Méthode de purification:

Purification par affinité contre l'antigène

Dilutions recommandées:

WB 1:2000-1:12000

IP 0.5-4.0 ug for IP and 1:500-1:1000 for WB

IHC 1:50-1:200

IF 1:50-1:500

## Applications

Applications testées:

IF, IHC, IP, WB, ELISA

Demandes citées:

ChIP, CoIP, IF, IHC, IP, WB

Spécificité de l'espèce:

Humain, rat, souris

Espèces citées:

Humain, souris

**Remarque-IHC: il est suggéré de démasquer l'antigène avec un tampon de TE buffer pH 9,0; (\*) A défaut, 'le démasquage de l'antigène peut être 'effectué avec un tampon citrate pH 6,0.**

Contrôles positifs:

WB : cellules HeLa, cellules BGC-823, cellules LO2, cellules MCF-7, tissu cardiaque humain, tissu de muscle squelettique de souris

IP : cellules MCF-7,

IHC : tissu de cancer de la prostate humain,

IF : cellules HeLa,

## Informations générales

TRIM24, also named as RNF82, TIF1 and TIF1A, interacts selectively in vitro with the AF2-activating domain of the estrogen receptors. Association with DNA-bound estrogen receptors, it requires the presence of estradiol. It is a regulation protein of P53. Defects in TRIM24 are a cause of thyroid papillary carcinoma (TPC) which is a common tumor of the thyroid that typically arises as an irregular, solid or cystic mass from otherwise normal thyroid tissue.

## Publications notables

Autrice	Pubmed ID	Journal	Application
Jun Chi	27689360	Aging (Albany NY)	WB,IHC
Tao Yu	31554795	Nat Commun	WB
Yanai Zhan	26396593	Epigenetics Chromatin	WB, IF, IP

## Stockage

Stockage:

Stocker à -20°C. Stable pendant un an après l'expédition.

Tampon de stockage:

PBS avec azoture de sodium à 0,02 % et glycérol à 50 % pH 7,3

L'aliquotage n'est pas nécessaire pour le stockage à -20C

\*\*\* Les 20ul contiennent 0,1% de BSA.

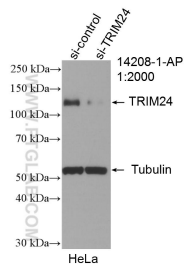
For technical support and original validation data for this product please contact:

T: 1 (888) 4PTGLAB (1-888-478-4522) (toll free in USA), or 1(312) 455-8498 (outside USA)

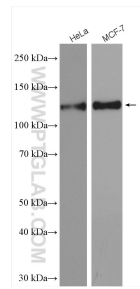
E: proteintech@ptglab.com  
W: ptglab.com

This product is exclusively available under Proteintech Group brand and is not available to purchase from any other manufacturer.

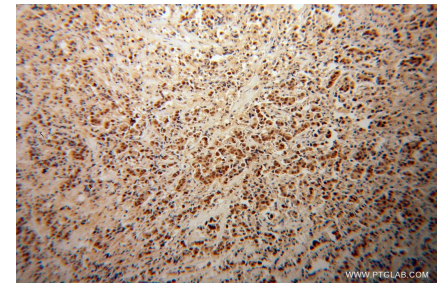
## Données de validation sélectionnées



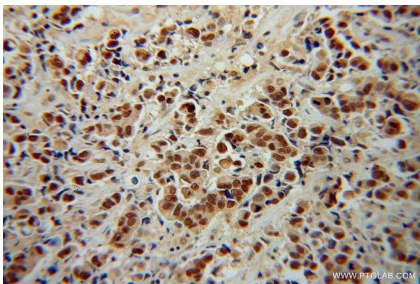
WB result of TRIM24 antibody (14208-1-AP; 1:2000; incubated at room temperature for 1.5 hours) with sh-Control and sh-TRIM24 transfected HeLa cells.



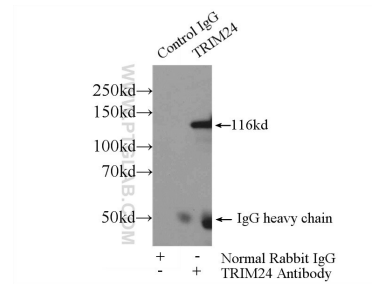
Various lysates were subjected to SDS PAGE followed by western blot with 14208-1-AP (TRIM24 antibody) at dilution of 1:6000 incubated at room temperature for 1.5 hours.



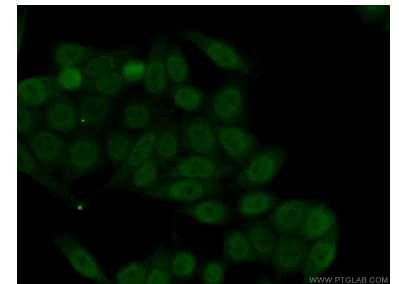
Immunohistochemical analysis of paraffin-embedded human prostate cancer using 14208-1-AP (TRIM24 antibody) at dilution of 1:100 (under 10x lens).



Immunohistochemical analysis of paraffin-embedded human prostate cancer using 14208-1-AP (TRIM24 antibody) at dilution of 1:100 (under 40x lens).



IP Result of anti-TRIM24 (IP:14208-1-AP, 4ug; Detection:14208-1-AP 1:800) with MCF-7 cells lysate 4000ug.



Immunofluorescent analysis of (10% Formaldehyde) fixed HeLa cells using 14208-1-AP (TRIM24 antibody) at dilution of 1:50 and Alexa Fluor 488-conjugated AffiniPure Goat Anti-Rabbit IgG(H+L).