

À des fins de recherche uniquement

# Anticorps Polyclonal de lapin anti-CD39/ENTPD1



Numéro de catalogue: 14211-1-AP

6 Publications

## Informations de base

<b>Numéro de catalogue:</b> 14211-1-AP	<b>Numéro d'acquisition GenBank:</b> BC047664	<b>Méthode de purification:</b> Purification par affinité contre l'antigène
<b>Taille:</b> 150ul , Concentration: 300 µg/ml by Nanodrop;	<b>Identification du gène (NCBI):</b> 953	<b>Dilutions recommandées:</b> WB 1:200-1:1000 IHC 1:50-1:500 IF 1:20-1:200
<b>Hôte:</b> Lapin	<b>Nom complet:</b> ectonucleoside triphosphate diphosphohydrolase 1	
<b>Isotype:</b> IgG	<b>MW calculé:</b> 58 kDa	
<b>Immunogen Catalog Number:</b> AG5429	<b>MW observés:</b> 50 kDa	

## Applications

**Applications testées:**  
FC, IF, IHC, WB, ELISA

**Demandes citées:**  
IF, IHC, WB

**Spécificité de l'espèce:**  
Humain, rat, souris

**Espèces citées:**  
Humain, rat, souris

**Contrôles positifs:**

**WB :** tissu placentaire de souris, tissu placentaire humain

**IHC :** tissu placentaire humain, tissu d'amygdalite humaine, tissu hépatique humain

**IF :** cellules HeLa,

**Remarque-IHC: il est suggéré de démasquer l'antigène avec un tampon de TE buffer pH 9,0; (\*) À défaut, le démasquage de l'antigène peut être effectué avec un tampon citrate pH 6,0.**

## Informations générales

ENTPD1(Ectonucleoside triphosphate diphosphohydrolase 1) is also named as CD39, NTPDase 1, Ecto-ATPDase 1 and belongs to the GDA1/CD39 NTPase family. In the nervous system, it can hydrolyze ATP and other nucleotides to regulate purinergic neurotransmission. It is a noncovalent tetrameric protein and that detergent inhibition of enzymatic activity is caused by dissociation of ectoapyrase tetramers into monomers(PMID: 9733785 ). And it is a 70- to 100-kDa protein that is heavily N-glycosylated(PMID:7930580). This protein has 6 glycosylation sites and 3 isoforms(58 kDa, 59 kDa and 34 kDa) produced by alternative splicing.

## Publications notables

Autrice	Pubmed ID	Journal	Application
Moyuru Hayashi	33146549	Am J Physiol Gastrointest Liver Physiol	IHC
Federica Costa	28915615	Oncotarget	IHC
Xing-Cheng Zhao	29996846	BMC Med Genomics	WB

## Stockage

**Stockage:**

Stocker à -20°C. Stable pendant un an après l'expédition.

**Tampon de stockage:**

PBS avec azoture de sodium à 0,02 % et glycérol à 50 % pH 7,3

L'aliquotage n'est pas nécessaire pour le stockage à -20C

\*\*\* Les 20ul contiennent 0,1% de BSA.

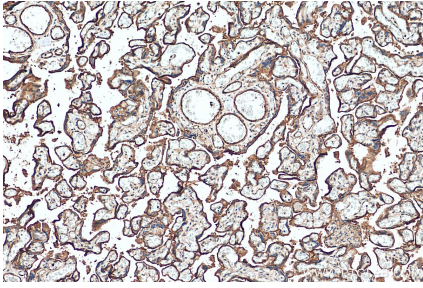
For technical support and original validation data for this product please contact:

T: 1 (888) 4PTGLAB (1-888-478-4522) (toll free in USA), or 1(312) 455-8498 (outside USA)

E: proteintech@ptglab.com  
W: ptglab.com

This product is exclusively available under Proteintech Group brand and is not available to purchase from any other manufacturer.

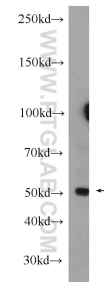
## Données de validation sélectionnées



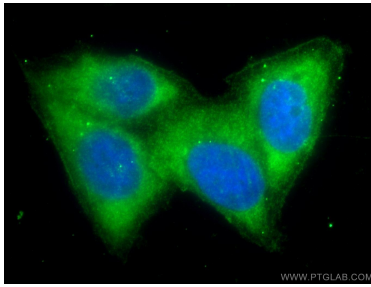
Immunohistochemical analysis of paraffin-embedded human placenta tissue slide using 14211-1-AP (CD39/ENTPD1 antibody) at dilution of 1:200 (under 10x lens). Heat mediated antigen retrieval with Tris-EDTA buffer (pH 9.0).



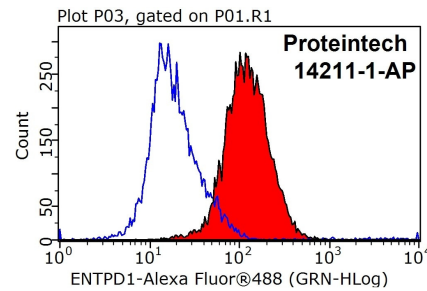
Immunohistochemical analysis of paraffin-embedded human tonsillitis tissue slide using 14211-1-AP (CD39/ENTPD1 antibody) at dilution of 1:200 (under 10x lens). Heat mediated antigen retrieval with Tris-EDTA buffer (pH 9.0).



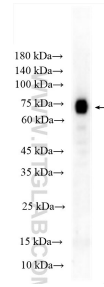
mouse placenta tissue were subjected to SDS PAGE followed by western blot with 14211-1-AP (ENTPD1 Antibody) at dilution of 1:300 incubated at room temperature for 1.5 hours.



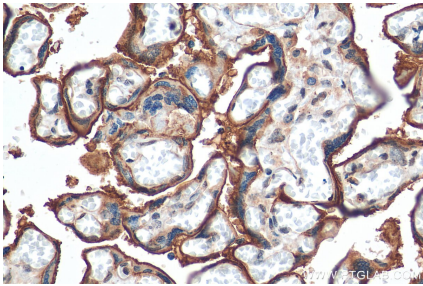
Immunofluorescent analysis of HeLa cells using 14211-1-AP (ENTPD1 antibody) at dilution of 1:50 and Alexa Fluor 488-conjugated AffiniPure Goat Anti-Rabbit IgG(H+L).



1x10<sup>6</sup> Jurkat cells were stained with 0.5ug ENTPD1 antibody (14211-1-AP, red) and control antibody (blue). Fixed with 90% MeOH blocked with 3% BSA (30 min). Alexa Fluor 488-conjugated AffiniPure Goat Anti-Rabbit IgG(H+L) with dilution 1:1000.



human placenta tissue were subjected to SDS PAGE followed by western blot with 14211-1-AP (CD39/ENTPD1 antibody) at dilution of 1:500 incubated at room temperature for 1.5 hours.



Immunohistochemical analysis of paraffin-embedded human placenta tissue slide using 14211-1-AP (CD39/ENTPD1 antibody) at dilution of 1:200 (under 40x lens). Heat mediated antigen retrieval with Tris-EDTA buffer (pH 9.0).