

À des fins de recherche uniquement

Anticorps Polyclonal de lapin anti-KCHIP1



Numéro de catalogue: 14212-1-AP

Informations de base

Numéro de catalogue:
14212-1-AP

Taille:
150ul, Concentration: 133 µg/ml by
Bradford method using BSA as the
standard;

Hôte:
Lapin

Isotype:
IgG

Immunogen Catalog Number:
AG5432

Numéro d'acquisition GenBank:
BC050375

Identification du gène (NCBI):
30820

Nom complet:
Kv channel interacting protein 1

MW calculé
227 aa, 27 kDa

MW observés:
25 kDa

Méthode de purification:
Purification par affinité contre
l'antigène

Dilutions recommandées:
WB 1:500-1:2000
IP 0.5-4.0 ug for IP and 1:200-1:1000
for WB
IHC 1:20-1:200

Applications

Applications testées:
FC, IHC, IP, WB, ELISA

Spécificité de l'espèce:
Humain

**Remarque-IHC: il est suggéré de démasquer
l'antigène avec un tampon de TE buffer pH
9.0; (*) À défaut, le démasquage de
l'antigène peut être effectué avec un
tampon citrate pH 6,0.**

Contrôles positifs:

WB : tissu de cervelet humain, tissu cérébral humain

IP : tissu cérébral humain foetal,

IHC : tissu de cancer du pancréas humain,

Informations générales

Human K(v) channel interacting protein 1 (KCHIP1) is a new member of the neural calcium binding protein superfamily. Members of the KCNIP family are small calcium binding proteins. They all have EF-hand-like domains, and differ from each other in the N-terminus. They are integral subunit components of native Kv4 channel complexes. They may regulate A-type currents, and hence neuronal excitability, in response to changes in intracellular calcium. KCHIP1 is a neuronal calcium sensor protein that is predominantly expressed at GABAergic synapses and it has been related with modulation of K(+) channels, GABAergic transmission and cell death.

Stockage

Stockage:

Stocker à -20°C. Stable pendant un an après l'expédition.

Tampon de stockage:

PBS avec azoture de sodium à 0,02 % et glycérol à 50 % pH 7,3

L'aliquotage n'est pas nécessaire pour le stockage à -20C

*** Les 20ul contiennent 0,1% de BSA.

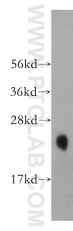
For technical support and original validation data for this product please contact:

T: 1 (888) 4PTGLAB (1-888-478-4522) (toll free
in USA), or 1(312) 455-8498 (outside USA)

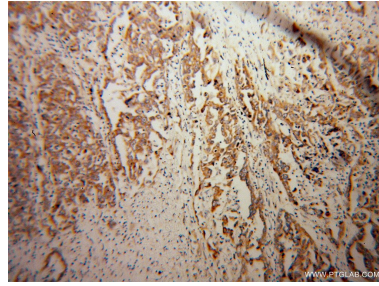
E: proteintech@ptglab.com
W: ptglab.com

This product is exclusively available under Proteintech Group brand and is not available to purchase from any other manufacturer.

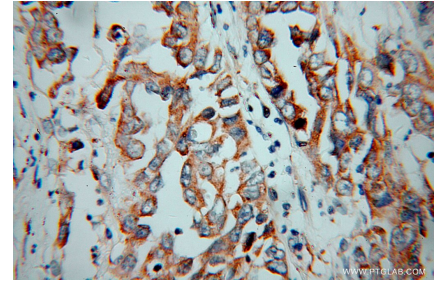
Données de validation sélectionnées



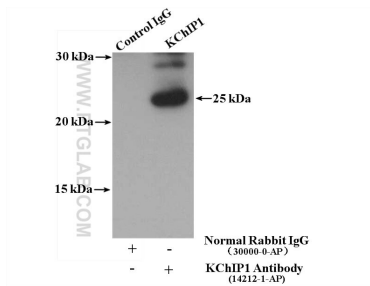
human cerebellum tissue were subjected to SDS PAGE followed by western blot with 14212-1-AP (KChIP1 antibody) at dilution of 1:500 incubated at room temperature for 1.5 hours.



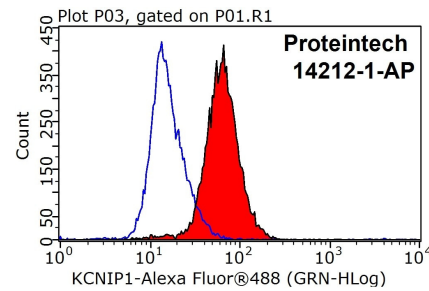
Immunohistochemical analysis of paraffin-embedded human pancreas cancer using 14212-1-AP (KChIP1 antibody) at dilution of 1:100 (under 10x lens).



Immunohistochemical analysis of paraffin-embedded human pancreas cancer using 14212-1-AP (KChIP1 antibody) at dilution of 1:100 (under 40x lens).



IP result of anti-KChIP1 (IP:14212-1-AP, 4ug; Detection:14212-1-AP 1:300) with fetal human brain tissue lysate 3500 ug.



1x10⁶ HepG2 cells were stained with 0.2ug KChIP1 antibody (14212-1-AP, red) and control antibody (blue). Fixed with 90% MeOH blocked with 3% BSA (30 min). Alexa Fluor 488-conjugated AffiniPure Goat Anti-Rabbit IgG(H+L) with dilution 1:1000.