

À des fins de recherche uniquement

Anticorps Polyclonal de lapin anti-MTIF3



Numéro de catalogue: 14219-1-AP

Phare

6 Publications

Informations de base

Numéro de catalogue:
14219-1-AP

Taille:
150ul, Concentration: 400 µg/ml by
Nanodrop and 293 µg/ml by Bradford
method using BSA as the standard;

Hôte:
Lapin

Isotype:
IgG

Immunogen Catalog Number:
AG5457

Numéro d'acquisition GenBank:
BC046166

Identification du gène (NCBI):
219402

Nom complet:
mitochondrial translational initiation
factor 3

MW calculé

32 kDa

MW observés:

29 kDa

Méthode de purification:
Purification par affinité contre
l'antigène

Dilutions recommandées:
WB 1:500-1:2000
IP 0.5-4.0 ug for IP and 1:500-1:1000
for WB
IHC 1:50-1:500

Applications

Applications testées:
IHC, IP, WB, ELISA

Demandes citées:
WB

Spécificité de l'espèce:
Humain, souris

Espèces citées:
Humain, rat, souris

**Remarque-IHC: il est suggéré de démasquer
l'antigène avec un tampon de TE buffer pH
9,0; (*) À défaut, 'le démasquage de
l'antigène peut être 'effectué avec un
tampon citrate pH 6,0.**

Contrôles positifs:

WB : cellules A431, cellules HeLa, cellules HepG2,
cellules HT-29

IP : cellules HeLa,

IHC : tissu hépatique humain, tissu testiculaire de
souris, tissu testiculaire humain

Informations générales

MTIF3, also named as DC38, belongs to the IF-3 family. MTIF3 encodes a 29 kDa protein that promotes formation of the initiation complex on the mitochondrial 55S ribosome, thereby playing an active role in initiation of translation. Like bacterial IF3, MTIF3 is believed to bind first to the small mitoribosomal subunit to keep it dissociated from the large subunit during initiation. After binding of MTIF3, mRNA and formylated initiator methionyl-tRNA (fMet-tRNA^{fMet}) bind to the small mitoribosomal subunit. The large subunit then joins the small subunit to form an elongation-competent ribosome (PMID:20887776, 31350787).

Publications notables

Autrice	Pubmed ID	Journal	Application
Nicola Ferreira	31721250	EMBO J	WB
Denise Müller	29990590	Clin Immunol	
Danielle L Rudler	31903419	Sci Adv	WB

Stockage

Stockage:

Stocker à -20°C. Stable pendant un an après l'expédition.

Tampon de stockage:

PBS avec azoture de sodium à 0,02 % et glycérol à 50 % pH 7,3

L'aliquotage n'est pas nécessaire pour le stockage à -20C

*** Les 20ul contiennent 0,1% de BSA.

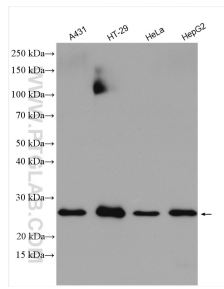
For technical support and original validation data for this product please contact:

T: 1 (888) 4PTGLAB (1-888-478-4522) (toll free
in USA), or 1(312) 455-8498 (outside USA)

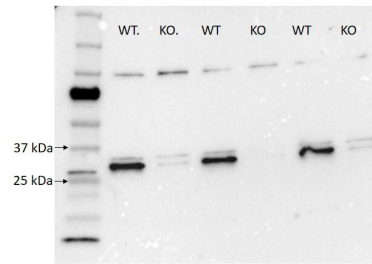
E: proteintech@ptglab.com
W: ptglab.com

This product is exclusively available under Proteintech Group brand and is not available to purchase from any other manufacturer.

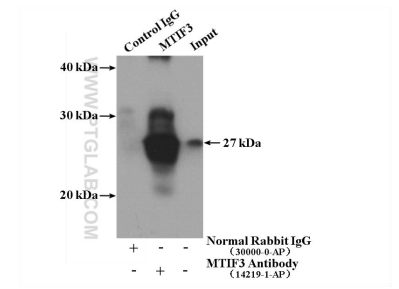
Données de validation sélectionnées



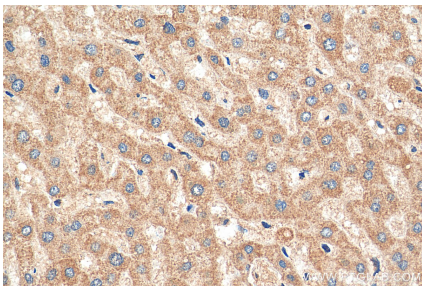
Various lysates were subjected to SDS PAGE followed by western blot with 14219-1-AP (MTIF3 antibody) at dilution of 1:1000 incubated at room temperature for 1.5 hours.



The MTIF3 knockout (>80% KO efficiency as evaluated by Sanger sequencing) and wildtype (WT) human preadipocyte cells were lysed in 1% SDS. 10 µg total protein were subjected to SDS PAGE followed by western blot with 14219-1-AP (MTIF3 antibody) at dilution of 1:2000 incubated overnight at 4 °C. Data from Dr. Mi Huang.



IP Result of anti-MTIF3 (IP:14219-1-AP, 4ug; Detection:14219-1-AP 1:500) with HeLa cells lysate 3200ug.



Immunohistochemical analysis of paraffin-embedded human liver tissue slide using 14219-1-AP (MTIF3 antibody) at dilution of 1:200 (under 40x lens). Heat mediated antigen retrieval with Tris-EDTA buffer (pH 9.0).