

À des fins de recherche uniquement

Anticorps Polyclonal de lapin anti-NFKB1,p105,p50



Numéro de catalogue: 14220-1-AP

154 Publications

Informations de base

Numéro de catalogue:

14220-1-AP

Taille:

150ul, Concentration: 800 µg/ml by Nanodrop;

Hôte:

Lapin

Isotype:

IgG

Immunogen Catalog Number:

AG5458

Numéro d'acquisition GenBank:

BC051765

Identification du gène (NCBI):

4790

Nom complet:

nuclear factor of kappa light polypeptide gene enhancer in B-cells 1

MW calculé

105 kDa

MW observés:

50 kDa, 105 kDa

Méthode de purification:

Purification par affinité contre l'antigène

Dilutions recommandées:

WB 1:5000-1:50000

IP 0.5-4.0 ug for IP and 1:1000-1:6000

for WB

IF 1:200-1:800

Applications

Applications testées:

IF, IP, WB, ELISA

Demandes citées:

ChIP, IF, IHC, IP, RIP, WB

Spécificité de l'espèce:

Humain, rat

Espèces citées:

bovin, canin, Humain, porc, poulet, rat, souris

Contrôles positifs:

WB : cellules A431, cellules HeLa, cellules Jurkat, cellules MG U-87, cellules Raji

IP : cellules Jurkat,

IF : cellules HeLa, cellules HepG2

Informations générales

NFKB is a pleiotropic transcription factor which is present in almost all cell types and is involved in many biological processes such as inflammation, immunity, differentiation, cell growth, tumorigenesis and apoptosis. NFKB is activated by various intra- and extracellular stimuli such as cytokines, oxidant free radicals, ultraviolet irradiation, and bacterial or viral products. NFKB is a family of transcription factors that consists of homo- and heterodimers of NFKB1/p50 and RelA/p65 subunits, and controls a variety of cellular events including development and immune responses. All members share a conserved amino terminus domain that includes dimerization, nuclear localization, and DNA binding regions, and a carboxy terminal transactivation domain. Serines 529 and 536 in the transactivation domain of RelA/p65 are phosphorylated in response to several stimuli including phorbol ester, IL1 alpha and TNF alpha as mediated by Ikb kinase and p38 MAPK. Phosphorylation of serines 529 and 536 is critical for RelA/p65 transcriptional activity. Activated NFKB translocates into the nucleus and stimulates the expression of genes involved in a wide variety of biological functions. Inappropriate activation of NFKB has been associated with a number of inflammatory diseases while persistent inhibition of NFKB leads to inappropriate immune cell development or delayed cell growth. NFKB1 appears to have dual functions such as cytoplasmic retention of attached NF-kappa-B proteins by p105 and generation of p50 by a cotranslational processing. This antibody can bind both p105 and p50 isoforms of NFKB1.

Publications notables

Autrice	Pubmed ID	Journal	Application
Zhichao Dou	32956704	Exp Cell Res	WB
Di Huang	30224822	Nat Immunol	
Tahir Mehmood	27628030	Biofactors	WB

Stockage

Stockage:

Stocker à -20°C. Stable pendant un an après l'expédition.

Tampon de stockage:

PBS avec azotate de sodium à 0,02 % et glycérol à 50 % pH 7,3

L'aliquotage n'est pas nécessaire pour le stockage à -20C

*** Les 20ul contiennent 0,1% de BSA.

For technical support and original validation data for this product please contact:

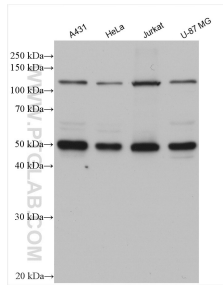
T: 1 (888) 4PTGLAB (1-888-478-4522) (toll free in USA), or 1(312) 455-8498 (outside USA)

E: proteintech@ptglab.com

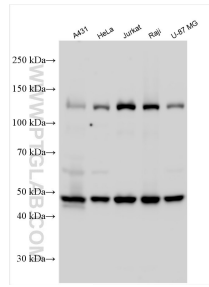
W: ptglab.com

This product is exclusively available under Proteintech Group brand and is not available to purchase from any other manufacturer.

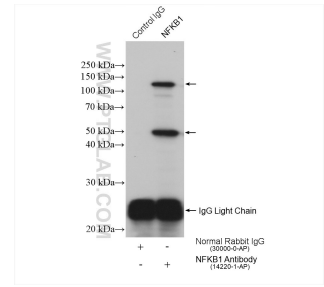
Données de validation sélectionnées



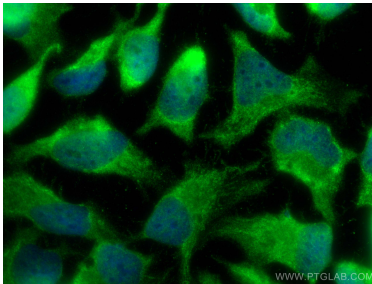
Various lysates were subjected to SDS PAGE followed by western blot with 14220-1-AP (NFκB1,p105,p50 antibody) at dilution of 1:4000 incubated at room temperature for 1.5 hours.



Various lysates were subjected to SDS PAGE followed by western blot with 14220-1-AP (NFκB1,p105,p50 antibody) at dilution of 1:10000 incubated at room temperature for 1.5 hours.



IP result of anti-NFκB1,p105,p50 (IP:14220-1-AP, 4μg; Detection:14220-1-AP 1:3000) with Jurkat cells lysate 2280 ug.



Immunofluorescent analysis of (-20°C Ethanol) fixed HeLa cells using NFκB1 antibody (14220-1-AP) at dilution of 1:400 and CoraLite®488-Conjugated AffiniPure Goat Anti-Rabbit IgG(H+L).