

À des fins de recherche uniquement

Anticorps Polyclonal de lapin anti- ACTN2



Numéro de catalogue: 14221-1-AP

16 Publications

Informations de base

Numéro de catalogue:

14221-1-AP

Taille:

150ul, Concentration: 650 µg/ml by Nanodrop;

Hôte:

Lapin

Isotype:

IgG

Immunogen Catalog Number:

AG5459

Numéro d'acquisition GenBank:

BC051770

Identification du gène (NCBI):

88

Nom complet:

actinin, alpha 2

MW calculé

104 kDa

MW observés:

103 kDa

Méthode de purification:

Purification par affinité contre l'antigène

Dilutions recommandées:

WB 1:5000-1:50000

IP 0.5-4.0 ug for IP and 1:500-1:2000 for WB

IHC 1:500-1:2000

IF 1:200-1:800

Applications

Applications testées:

IF, IHC, IP, WB, ELISA

Demandes citées:

IF, IHC, WB

Spécificité de l'espèce:

Humain, rat, souris

Espèces citées:

Humain, rat, souris

Remarque-IHC: il est suggéré de démasquer l'antigène avec un tampon de TE buffer pH 9,0; (*) À défaut, 'le démasquage de l'antigène peut être effectué avec un tampon citrate pH 6,0.

Contrôles positifs:

WB : tissu cérébral de souris, cellules C2C12, cœur de souris, muscle squelettique de rat, rein de souris, tissu de muscle squelettique de souris, tissu pulmonaire de souris

IP : cellules HeLa,

IHC : tissu cardiaque de souris, tissu de muscle squelettique de souris

IF : tissu cardiaque de souris, Cardiomyocyte humain dérivé de CSPi, cellules C2C12, cellules NIH/3T3

Informations générales

Alpha actinin 2 (ACTN2) belongs to the alpha-actinin family and is expressed in both skeletal and cardiac muscles and functions to anchor myofibrillar actin thin filaments and titin to Z-discs (PMID: 30701273). ACTN2 is an actin-binding protein with multiple roles in different cell types. In nonmuscle cells, the cytoskeletal isoform is found along microfilament bundles and adherens-type junctions, where it is involved in binding actin to the membrane. In contrast, skeletal, cardiac, and smooth muscle isoforms are localized to the Z disc and analogous dense bodies, where they help anchor the myofibrillar actin filaments. Mutations in ACTN2 are associated with hypertrophic cardiomyopathy, as well as dilated cardiomyopathy and endocardial fibroelastosis (PMID: 20022194, 14567970).

Publications notables

Autrice	Pubmed ID	Journal	Application
Xueling He	28969971	Prog Biophys Mol Biol	WB
Maike Schuldt	33148509	J Mol Cell Cardiol	IF
Qianqian Liang	36413948	Dev Cell	IF

Stockage

Stockage:

Stocker à -20°C. Stable pendant un an après l'expédition.

Tampon de stockage:

PBS avec azoture de sodium à 0,02 % et glycérol à 50 % pH 7,3

L'aliquotage n'est pas nécessaire pour le stockage à -20C

*** Les 20ul contiennent 0,1% de BSA.

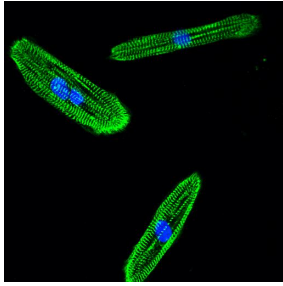
For technical support and original validation data for this product please contact:

T: 1 (888) 4PTGLAB (1-888-478-4522) (toll free in USA), or 1(312) 455-8498 (outside USA)

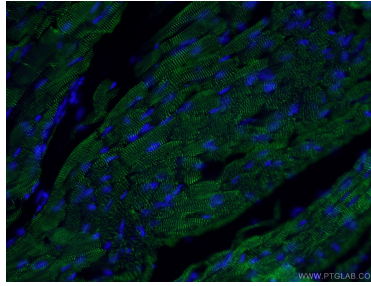
E: proteintech@ptglab.com
W: ptglab.com

This product is exclusively available under Proteintech Group brand and is not available to purchase from any other manufacturer.

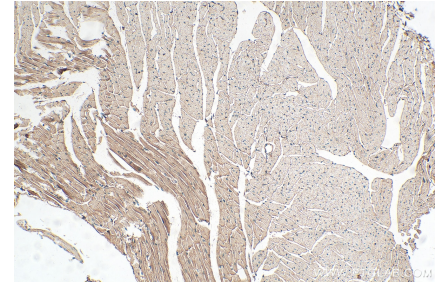
Données de validation sélectionnées



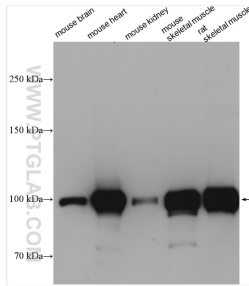
Human iPSC derived cardiomyocyte in 2D culture, with alpha actinin (14221-1-AP) and DAPI. Image courtesy of Chandan Kadir Nagaraju, Experimental Cardiology, KU Leuven, Belgium.



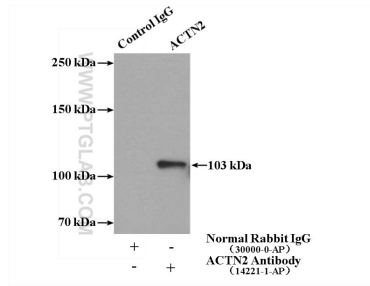
Immunofluorescent analysis of (4% PFA) fixed mouse heart tissue using 14221-1-AP (ACTN2 antibody) at dilution of 1:400 and Alexa Fluor 488-Conjugated AffiniPure Goat Anti-Rabbit IgG(H+L).



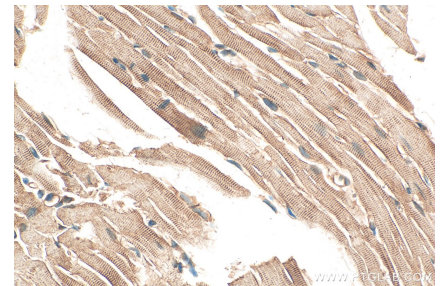
Immunohistochemical analysis of paraffin-embedded mouse heart tissue slide using 14221-1-AP (ACTN2 antibody) at dilution of 1:1000 (under 10x lens). Heat mediated antigen retrieval with Tris-EDTA buffer (pH 9.0).



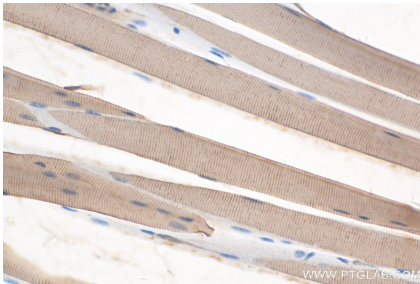
Various lysates were subjected to SDS PAGE followed by western blot with 14221-1-AP (ACTN2 antibody) at dilution of 1:30000 incubated at room temperature for 1.5 hours.



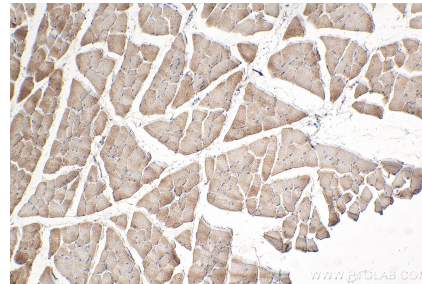
IP Result of anti-ACTN2 (IP:14221-1-AP, 4ug; Detection:14221-1-AP 1:1000) with HeLa cells lysate 1080ug.



Immunohistochemical analysis of paraffin-embedded mouse heart tissue slide using 14221-1-AP (ACTN2 antibody) at dilution of 1:1000 (under 40x lens). Heat mediated antigen retrieval with Tris-EDTA buffer (pH 9.0).



Immunohistochemical analysis of paraffin-embedded mouse skeletal muscle tissue slide using 14221-1-AP (ACTN2 antibody) at dilution of 1:1000 (under 40x lens). Heat mediated antigen retrieval with Tris-EDTA buffer (pH 9.0).



Immunohistochemical analysis of paraffin-embedded mouse skeletal muscle tissue slide using 14221-1-AP (ACTN2 antibody) at dilution of 1:1000 (under 10x lens). Heat mediated antigen retrieval with Tris-EDTA buffer (pH 9.0).