

À des fins de recherche uniquement

Anticorps Polyclonal de lapin anti-STAU1



Numéro de catalogue: 14225-1-AP

Phare

15 Publications

Informations de base

Numéro de catalogue:

14225-1-AP

Taille:

150ul, Concentration: 500 µg/ml by Nanodrop and 333 µg/ml by Bradford method using BSA as the standard;

Hôte:

Lapin

Isotype:

IgG

Immunogen Catalog Number:

AG5464

Numéro d'acquisition GenBank:

BC050432

Identification du gène (NCBI):

6780

Nom complet:

staufen, RNA binding protein, homolog 1 (Drosophila)

MW calculé

63 kDa

MW observés:

55 kDa

Méthode de purification:

Purification par affinité contre l'antigène

Dilutions recommandées:

WB 1:500-1:3000

IP 0.5-4.0 ug for IP and 1:500-1:1000 for WB

IF 1:50-1:500

Applications

Applications testées:

IF, IP, WB, ELISA

Demandes citées:

IF, RIP, WB

Spécificité de l'espèce:

Humain, rat, souris

Espèces citées:

Humain

Contrôles positifs:

WB : tissu cérébral humain, cellules K-562, tissu cérébral de souris

IP : tissu cérébral de souris,

IF : cellules HeLa,

Informations générales

Staufen1 (STAU1)-mediated mRNA decay (SMD) degrades translationally active mRNAs that bind the double-stranded (ds)RNA binding protein STAU1 within their 3'-untranslated regions (3'UTRs) [PMID:21307942]. STAU1 can binds to stem structures and protect Dvl2 mRNA from degradation by associating with the secondary structure in the U1 region which is located at 5' position of second U stretch in the U2 region [PMID:17510634]. It has a role in specific positioning of mRNAs at given sites in the cell by cross-linking cytoskeletal and RNA components, and in stimulating their translation at the site. There are two isoforms of STAU1 protein and the molecular weight of two isoforms are respectively 63 kDa and 55 kDa

Publications notables

Autrice	Pubmed ID	Journal	Application
Evan P Booy	30247708	Nucleic Acids Res	WB
Shuyuan Shen	32322670	Mol Ther Oncolytics	RIP
Yoichiro Sugimoto	25799984	Nature	WB

Stockage

Stockage:

Stocker à -20°C. Stable pendant un an après l'expédition.

Tampon de stockage:

PBS avec azoture de sodium à 0,02 % et glycérol à 50 % pH 7,3

L'aliquotage n'est pas nécessaire pour le stockage à -20C

*** Les 20ul contiennent 0,1% de BSA.

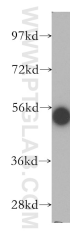
For technical support and original validation data for this product please contact:

T: 1 (888) 4PTGLAB (1-888-478-4522) (toll free in USA), or 1(312) 455-8498 (outside USA)

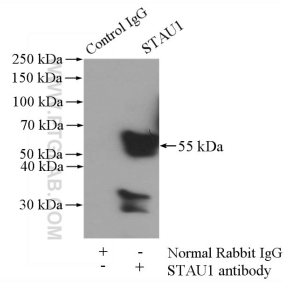
E: proteintech@ptglab.com
W: ptglab.com

This product is exclusively available under Proteintech Group brand and is not available to purchase from any other manufacturer.

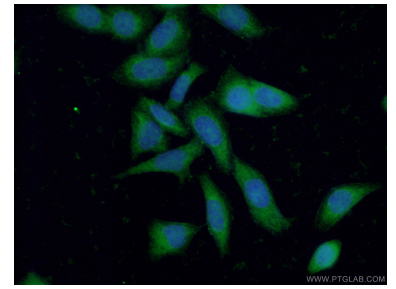
Données de validation sélectionnées



human brain tissue were subjected to SDS PAGE followed by western blot with 14225-1-AP (STAU1 antibody) at dilution of 1:300 incubated at room temperature for 1.5 hours.



IP Result of anti-STAU1 (IP:14225-1-AP, 4ug; Detection:14225-1-AP 1:500) with mouse brain tissue lysate 3440ug.



Immunofluorescent analysis of (-20°C Ethanol) fixed HeLa cells using 14225-1-AP (STAU1 antibody) at dilution of 1:50 and Alexa Fluor 488-conjugated AffiniPure Goat Anti-Rabbit IgG(H+L).