

À des fins de recherche uniquement

Anticorps Polyclonal de lapin anti-S100A9



Numéro de catalogue: 14226-1-AP

Phare

6 Publications

Informations de base

Numéro de catalogue:

14226-1-AP

Taille:

150ul, Concentration: 500 µg/ml by Nanodrop and 333 µg/ml by Bradford method using BSA as the standard;

Hôte:

Lapin

Isotype:

IgG

Immunogen Catalog Number:

AG5465

Numéro d'acquisition GenBank:

BC047681

Identification du gène (NCBI):

6280

Nom complet:

S100 calcium binding protein A9

MW calculé

13 kDa

MW observés:

14 kDa, 28 kDa

Méthode de purification:

Purification par affinité contre l'antigène

Dilutions recommandées:

WB 1:200-1:1000

IHC 1:50-1:500

Applications

Applications testées:

IHC, WB, ELISA

Demandes citées:

IF, IHC, WB

Spécificité de l'espèce:

Humain, rat, souris

Espèces citées:

Humain, rat, souris

Remarque-IHC: il est suggéré de démasquer l'antigène avec un tampon de TE buffer pH 9,0; (*) A défaut, le démasquage de l'antigène peut être effectué avec un tampon citrate pH 6,0.

Contrôles positifs:

WB : tissu splénique de souris, cellules MCF-7, sang humain, Sanguin humain, tissu cardiaque de rat, tissu cardiaque de souris, tissu cardiaque humain

IHC : tissu de cancer du sein humain, tissu d'amygdalite humaine

Informations générales

S100A9 is a calcium binding protein as a member of the S100 family of proteins. S100 proteins are low molecular weight (9 to 14 kDa) intracellular calcium-binding proteins that control key cellular pathways including regulation of the cytoskeleton, cell migration and adhesion, and host oxidative defense. S100A9 may exist as a homodimer, heterodimer (24 kDa) with an S100A8 partner (S100A8/A9), or as a heterotetramer (28 kDa) with an S100A8 partner (S100A8/A9). S100A8 and S100A9 are found intracellularly in granulocytes, monocytes, and early differentiation stages of macrophages.

Publications notables

Autrice	Pubmed ID	Journal	Application
Ran Wei	33205453	Int J Cancer	IHC,IF
Qiang Liu	35525986	Cell Biosci	WB,IHC
Hong Huang	35582423	Int J Med Sci	IF

Stockage

Stockage:

Stocker à -20°C. Stable pendant un an après l'expédition.

Tampon de stockage:

PBS avec azoture de sodium à 0,02 % et glycérol à 50 % pH 7,3

L'aliquotage n'est pas nécessaire pour le stockage à -20C

*** Les 20ul contiennent 0,1% de BSA.

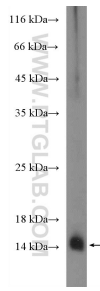
For technical support and original validation data for this product please contact:

T: 1 (888) 4PTGLAB (1-888-478-4522) (toll free in USA), or 1(312) 455-8498 (outside USA)

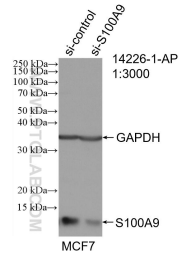
E: proteintech@ptglab.com
W: ptglab.com

This product is exclusively available under Proteintech Group brand and is not available to purchase from any other manufacturer.

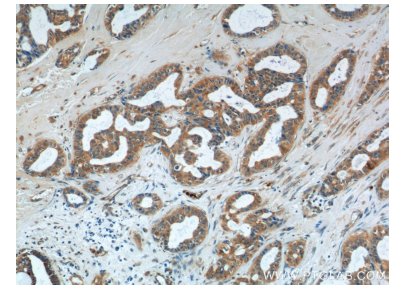
Données de validation sélectionnées



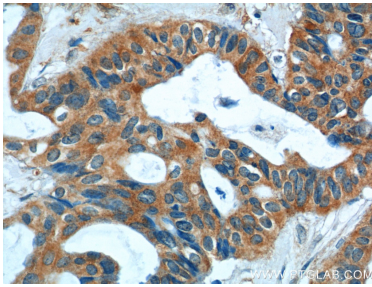
mouse spleen tissue were subjected to SDS PAGE followed by western blot with 14226-1-AP (S100A9 Antibody) at dilution of 1:3000 incubated at room temperature for 1.5 hours.



WB result of S100A9 antibody (14226-1-AP; 1:3000; incubated at room temperature for 1.5 hours) with sh-Control and sh-S100A9 transfected MCF-7 cells.



Immunohistochemical analysis of paraffin-embedded human breast cancer tissue slide using 14226-1-AP (S100A9 Antibody) at dilution of 1:200 (under 10x lens).



Immunohistochemical analysis of paraffin-embedded human breast cancer tissue slide using 14226-1-AP (S100A9 Antibody) at dilution of 1:200 (under 40x lens).