

À des fins de recherche uniquement

Anticorps Polyclonal de lapin anti-LIV-1/ZIP6



Numéro de catalogue: 14236-1-AP

Phare

7 Publications

Informations de base

Numéro de catalogue:

14236-1-AP

Taille:

150ul, Concentration: 750 µg/ml by Nanodrop and 400 µg/ml by Bradford method using BSA as the standard;

Hôte:

Lapin

Isotype:

IgG

Immunogen Catalog Number:

AG5478

Numéro d'acquisition GenBank:

BC039498

Identification du gène (NCBI):

25800

Nom complet:

solute carrier family 39 (zinc transporter), member 6

MW calculé

85 kDa

MW observés:

85-100 kDa, 48 and 32 kDa

Méthode de purification:

Purification par affinité contre l'antigène

Dilutions recommandées:

WB 1:500-1:2000

IHC 1:50-1:500

Applications

Applications testées:

IHC, WB, ELISA

Demandes citées:

IF, IHC, WB

Spécificité de l'espèce:

Humain, rat, souris

Espèces citées:

Humain, poisson-zèbre

Remarque-IHC: il est suggéré de démasquer l'antigène avec un tampon de TE buffer pH 9,0; (*) A défaut, 'le démasquage de l'antigène peut être effectué avec un tampon citrate pH 6,0.

Contrôles positifs:

WB : cellules HeLa, cellules 4T1, cellules A549, cellules MCF-7

IHC : tissu de cancer du pancréas humain,

Informations générales

The zinc transporter LIV-1 (also known as SLC39A6 or ZIP6) was originally identified as an estrogen-induced gene in breast cancer cells. Elevated LIV-1 expression is reportedly related to cancer progression in various types of cancer, including breast, prostate, pancreatic, cervical and liver cancers. While correlation of LIV-1 and prognosis may vary. LIV 1 has 3 isoforms with MW of 85-100 (glycosylation and phosphorylation), 48 and 32 kDa while migrates as different bands in different lysates in SDS-PAGE.

Publications notables

Autrice	Pubmed ID	Journal	Application
Xiao-Bin Cui	26444413	J Transl Med	WB, IHC
Lei Zhao	30851936	Biochem Biophys Res Commun	WB
Wu Chen C	23644492	Nat Genet	WB, IHC

Stockage

Stockage:

Stocker à -20°C. Stable pendant un an après l'expédition.

Tampon de stockage:

PBS avec azoture de sodium à 0,02 % et glycérol à 50 % pH 7,3

L'aliquotage n'est pas nécessaire pour le stockage à -20C

*** Les 20ul contiennent 0,1% de BSA.

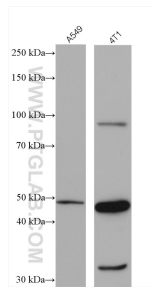
For technical support and original validation data for this product please contact:

T: 1 (888) 4PTGLAB (1-888-478-4522) (toll free in USA), or 1(312) 455-8498 (outside USA)

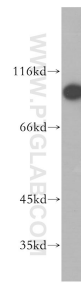
E: proteintech@ptglab.com
W: ptglab.com

This product is exclusively available under Proteintech Group brand and is not available to purchase from any other manufacturer.

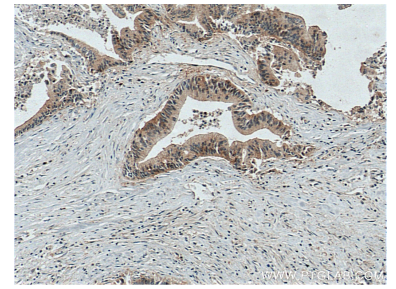
Données de validation sélectionnées



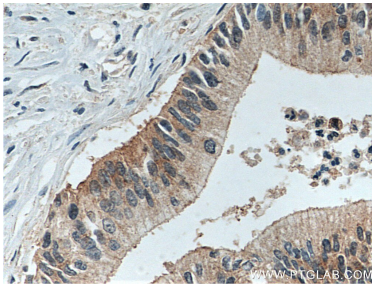
Various lysates were subjected to SDS PAGE followed by western blot with 14236-1-AP (LIV-1/ZIP6 antibody) at dilution of 1:4000 incubated at room temperature for 1.5 hours.



HeLa cells were subjected to SDS PAGE followed by western blot with 14236-1-AP (LIV-1/ZIP6 antibody) at dilution of 1:1000 incubated at room temperature for 1.5 hours.



Immunohistochemical analysis of paraffin-embedded human pancreas cancer tissue slide using 14236-1-AP (LIV-1/ZIP6 antibody) at dilution of 1:200 (under 10x lens. Heat mediated antigen retrieval with Tris-EDTA buffer (pH 9.0).



Immunohistochemical analysis of paraffin-embedded human pancreas cancer tissue slide using 14236-1-AP (LIV-1/ZIP6 antibody) at dilution of 1:200 (under 40x lens. Heat mediated antigen retrieval with Tris-EDTA buffer (pH 9.0).