

À des fins de recherche uniquement

# Anticorps Polyclonal de lapin anti-Myocilin



Numéro de catalogue: 14238-1-AP

3 Publications

## Informations de base

Numéro de catalogue:

14238-1-AP

Taille:

150ul, Concentration: 450 µg/ml by Nanodrop and 333 µg/ml by Bradford method using BSA as the standard;

Hôte:

Lapin

Isotype:

IgG

Immunogen Catalog Number:

AG5492

Numéro d'acquisition GenBank:

BC029261

Identification du gène (NCBI):

4653

Nom complet:

myocilin, trabecular meshwork inducible glucocorticoid response

MW calculé

57 kDa

MW observés:

66 kDa

Méthode de purification:

Purification par affinité contre l'antigène

Dilutions recommandées:

WB 1:200-1:1000

IP 0.5-4.0 ug for IP and 1:500-1:1000 for WB

## Applications

Applications testées:

IP, WB, ELISA

Demandes citées:

WB

Spécificité de l'espèce:

Humain, rat, souris

Espèces citées:

Humain, souris

Contrôles positifs:

WB : tissu cardiaque humain, tissu de muscle squelettique de souris, tissu d'estomac humain

IP : tissu de muscle squelettique de souris,

## Informations générales

Myocilin (MYOC), also known as TIGR or GLC1A, is a secreted glycoprotein of the olfactomedin family, originally identified in trabecular meshwork cells after prolonged treatment with glucocorticoids, and, independently, in the retina (PMID: 9176893; 9169133). It may participate in the obstruction of fluid outflow in the trabecular meshwork. Defects in MYOC are the cause of primary open angle glaucoma (POAG) (PMID: 21709622). MYOC has a molecular weight of 55-57 kDa, besides, a 66-kDa form, which could be a result of post-translational modifications, has also been reported in some researches (PMID: 9497363; 12150989).

## Publications notables

Autrice	Pubmed ID	Journal	Application
Miao Wei	36017046	Int J Ophthalmol	WB
Ziyu Zhou	33987224	Ann Transl Med	WB
Xiaochen Wang	37307020	J Ocul Pharmacol Ther	WB

## Stockage

Stockage:

Stocker à -20°C. Stable pendant un an après l'expédition.

Tampon de stockage:

PBS avec azoture de sodium à 0,02 % et glycérol à 50 % pH 7,3

L'aliquotage n'est pas nécessaire pour le stockage à -20C

\*\*\* Les 20ul contiennent 0,1% de BSA.

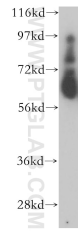
For technical support and original validation data for this product please contact:

T: 1 (888) 4PTGLAB (1-888-478-4522) (toll free in USA), or 1(312) 455-8498 (outside USA)

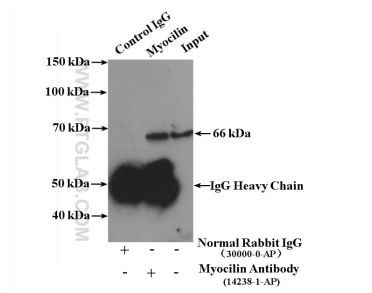
E: [proteintech@ptglab.com](mailto:proteintech@ptglab.com)  
W: [ptglab.com](http://ptglab.com)

This product is exclusively available under Proteintech Group brand and is not available to purchase from any other manufacturer.

## Données de validation sélectionnées



human heart tissue were subjected to SDS PAGE followed by western blot with 14238-1-AP (Myocilin antibody) at dilution of 1:300 incubated at room temperature for 1.5 hours.



IP Result of anti-Myocilin (IP:14238-1-AP, 4ug; Detection:14238-1-AP 1:500) with mouse skeletal muscle tissue lysate 4000ug.