

À des fins de recherche uniquement

Anticorps Polyclonal de lapin anti-Autotaxin



Numéro de catalogue: 14243-1-AP

6 Publications

Informations de base

Numéro de catalogue:

14243-1-AP

Taille:

150ul, Concentration: 500 µg/ml by Nanodrop and 333 µg/ml by Bradford method using BSA as the standard;

Hôte:

Lapin

Isotype:

IgG

Immunogen Catalog Number:

AG5499

Numéro d'acquisition GenBank:

BC034961

Identification du gène (NCBI):

5168

Nom complet:

ectonucleotide pyrophosphatase/phosphodiesterase 2

MW calculé

99 kDa

MW observés:

100-110 kDa

Méthode de purification:

Purification par affinité contre l'antigène

Dilutions recommandées:

WB 1:500-1:2000

IP 0.5-4.0 ug for IP and 1:500-1:1000 for WB

IHC 1:20-1:200

Applications

Applications testées:

IHC, IP, WB, ELISA

Demandes citées:

IHC, WB

Spécificité de l'espèce:

Humain, rat, souris

Espèces citées:

Humain, rat, souris

Remarque-IHC: il est suggéré de démasquer l'antigène avec un tampon de TE buffer pH 9,0; (*) A défaut, 'le démasquage de l'antigène peut être 'effectué avec un tampon citrate pH 6,0.

Contrôles positifs:

WB : tissu cérébral de souris, tissu cérébral de rat, tissu placentaire humain, tissu rénal de souris

IP : tissu cérébral de souris,

IHC : tissu de cancer du foie humain, tissu d'intestin grêle humain

Informations générales

ENPP2, Autotaxin or Extracellular lysophospholipase D, is a 863 amino acid secreted protein, which is detected in blood plasma (at protein level) (PubMed:12176993, PubMed:26371182). ENPP2 is Predominantly expressed in brain, placenta, ovary, and small intestine. ENPP2 is expressed in a number of carcinomas such as hepatocellular and prostate carcinoma, neuroblastoma and non-small-cell lung cancer. ENPP2 is expressed in body fluids such as plasma, cerebral spinal fluid (CSF), saliva, follicular and amniotic fluids. The calculated molecular weight of ENPP2 is about 100 kDa (PMID: 22301782), but modified ENPP2 is 120 kDa (PMID: 19808661). ENPP2 Hydrolyzes lysophospholipids to produce the signaling molecule lysophosphatidic acid (LPA) in extracellular fluids (PubMed:15769751, PubMed:26371182, PubMed:27754931).

Publications notables

Autrice	Pubmed ID	Journal	Application
Yongjie Jin	34685560	Cells	WB
Gang Ren	36090480	Mol Ther Oncolytics	WB
Fangbo Xia	29950994	Front Pharmacol	WB

Stockage

Stockage:

Stocker à -20°C. Stable pendant un an après l'expédition.

Tampon de stockage:

PBS avec azoture de sodium à 0,02 % et glycérol à 50 % pH 7,3

L'aliquotage n'est pas nécessaire pour le stockage à -20C

*** Les 20ul contiennent 0,1% de BSA.

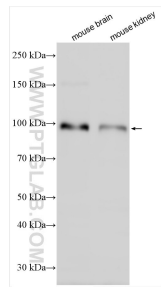
For technical support and original validation data for this product please contact:

T: 1 (888) 4PTGLAB (1-888-478-4522) (toll free in USA), or 1(312) 455-8498 (outside USA)

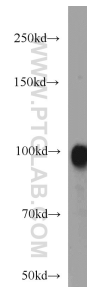
E: proteintech@ptglab.com
W: ptglab.com

This product is exclusively available under Proteintech Group brand and is not available to purchase from any other manufacturer.

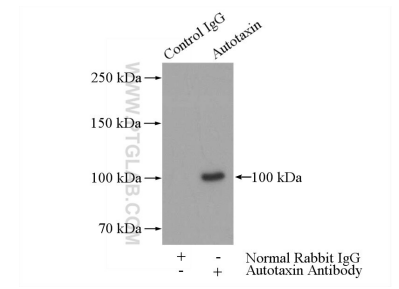
Données de validation sélectionnées



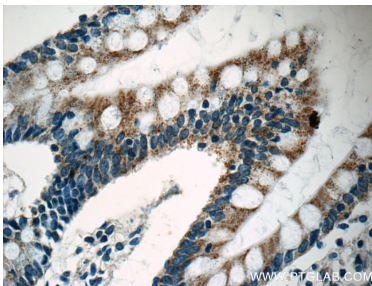
Various lysates were subjected to SDS PAGE followed by western blot with 14243-1-AP (Autotaxin antibody) at dilution of 1:1000 incubated at room temperature for 1.5 hours.



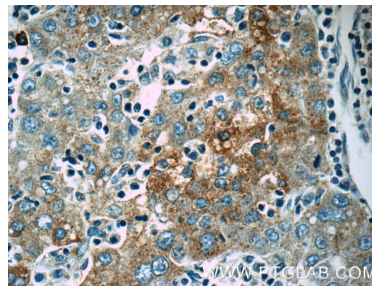
mouse brain tissue were subjected to SDS PAGE followed by western blot with 14243-1-AP (Autotaxin antibody) at dilution of 1:500 incubated at room temperature for 1.5 hours.



IP Result of anti-Autotaxin (IP:14243-1-AP, 5ug; Detection:14243-1-AP 1:500) with mouse brain tissue lysate 4000ug.



Immunohistochemical analysis of paraffin-embedded human small intestine tissue slide using 14243-1-AP (Autotaxin antibody at dilution of 1:50).



Immunohistochemical analysis of paraffin-embedded human liver cancer tissue slide using 14243-1-AP (Autotaxin antibody at dilution of 1:50 (under 40x lens).