

À des fins de recherche uniquement

Anticorps Polyclonal de lapin anti-PNPLA6



Numéro de catalogue: 14261-1-AP

2 Publications

Informations de base

Numéro de catalogue: 14261-1-AP	Numéro d'acquisition GenBank: BC051768	Méthode de purification: Purification par affinité contre l'antigène
Taille: 150ul , Concentration: 350 µg/ml by Nanodrop and 313 µg/ml by Bradford method using BSA as the standard;	Identification du gène (NCBI): 10908	Dilutions recommandées: WB 1:500-1:1000 IF 1:10-1:100
Hôte: Lapin	Nom complet: patatin-like phospholipase domain containing 6	
Isotype: IgG	MW calculé: 150 kDa	
Immunogen Catalog Number: AG5546	MW observés: 150 kDa	

Applications

Applications testées:

IF, IP, WB, ELISA

Demandes citées:

WB

Spécificité de l'espèce:

Humain, rat, souris

Espèces citées:

Humain

Contrôles positifs:

WB : cellules HEK-293, cellules SH-SY5Y, tissu cérébral de souris

IF : cellules HepG2, cellules MCF-7

Informations générales

PNPLA6 (patatin-like phospholipase domain-containing protein 6) is also named as NTE (neuropathy target esterase) and belongs to the NTE family. It plays an important role in motor neuron development and implicated overexpression of BMP signaling (PMID:22996643). Defects in PNPLA6 are the cause of spastic paraplegia autosomal recessive type 39 (SPG39) (PMID:18313024). This protein has a glycosylation site that it can be glycosylated (PMID:9576844). It has 3 isoforms produced by alternative splicing.

Publications notables

Autrice	Pubmed ID	Journal	Application
Alexandre Luscher	31216233	Mol Biol Cell	
Ascano Manuel MJr	23235829	Nature	WB

Stockage

Stockage:

Stocker à -20°C. Stable pendant un an après l'expédition.

Tampon de stockage:

PBS avec azoture de sodium à 0,02 % et glycérol à 50 % pH 7,3

L'aliquotage n'est pas nécessaire pour le stockage à -20C

*** Les 20ul contiennent 0,1% de BSA.

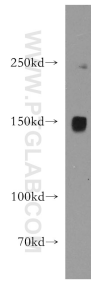
For technical support and original validation data for this product please contact:

T: 1 (888) 4PTGLAB (1-888-478-4522) (toll free in USA), or 1(312) 455-8498 (outside USA)

E: proteintech@ptglab.com
W: ptglab.com

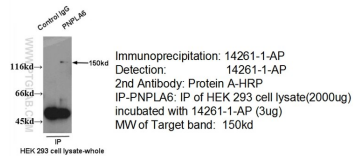
This product is exclusively available under Proteintech Group brand and is not available to purchase from any other manufacturer.

Données de validation sélectionnées

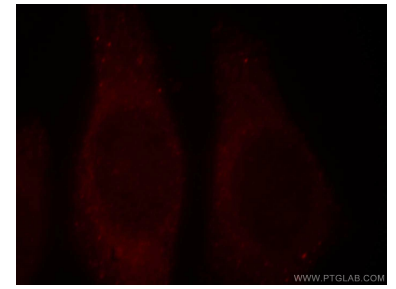


HEK-293 cells were subjected to SDS PAGE followed by western blot with 14261-1-AP (PNPLA6 antibody) at dilution of 1:500 incubated at room temperature for 1.5 hours.

IP of 14261-1-AP with HEK 293 Cell



IP result of anti-PNPLA6 (14261-1-AP for IP and Detection) with HEK-293 cells.



Immunofluorescent analysis of HepG2 cells, using PNPLA6 antibody 14261-1-AP at 1:25 dilution and Rhodamine-labeled goat anti-rabbit IgG (red).