

À des fins de recherche uniquement

# Anticorps Polyclonal de lapin anti-ARNTL



Numéro de catalogue: 14268-1-AP

Phare

44 Publications

## Informations de base

Numéro de catalogue:  
14268-1-AP

Taille:  
150ul, Concentration: 550 µg/ml by Nanodrop and 300 µg/ml by Bradford method using BSA as the standard;

Hôte:  
Lapin

Isotype:  
IgG

Immunogen Catalog Number:  
AG5586

Numéro d'acquisition GenBank:  
BC041129

Identification du gène (NCBI):  
406

Nom complet:  
aryl hydrocarbon receptor nuclear translocator-like

MW calculé:  
69 kDa

MW observés:  
69-75 kDa

Méthode de purification:  
Purification par affinité contre l'antigène

Dilutions recommandées:  
WB 1:2000-1:10000  
IP 0.5-4.0 ug for IP and 1:200-1:1000 for WB  
IHC 1:50-1:500

## Applications

Applications testées:  
FC, IHC, IP, WB, ELISA

Demandes citées:  
ChIP, CoIP, IF, IHC, WB

Spécificité de l'espèce:  
Humain, rat, souris

Espèces citées:  
Humain, rat, souris

**Remarque-IHC: il est suggéré de démasquer l'antigène avec un tampon de TE buffer pH 9,0; (\*) A défaut, 'le démasquage de l'antigène peut être effectué avec un tampon citrate pH 6,0.**

Contrôles positifs:

WB : cellules HT-1080, cellules 3T3-L1, cellules HeLa, cellules MCF-7, cellules NCI-H1299, cellules SH-SY5Y, tissu hépatique de rat, tissu hépatique de souris

IP : cellules HeLa,

IHC : tissu de cancer de la prostate humain, tissu de cancer du côlon humain

## Informations générales

BMAL1, a basic helix-loop-helices with Per-Arnt-Sim (PAS) domain transcription factor, is one of components that has core clock function in mammals. It form a heterodimer with CLOCK, and induce the transcription of target genes by binding to E-box elements within their promoter regions. And this transcription is inhibited in a feedback loop by PER, and also by CRY proteins. Also BMAL1 is a key player in the regulation of metabolism, playing a role in adipogenesis and in the control of glucose and triglycerides levels.

## Publications notables

Autrice	Pubmed ID	Journal	Application
Tingling Zou	36063856	Chem Biol Interact	WB,IHC
Min Chen	36216079	Biochem Pharmacol	WB
Lingling Tang	36505412	Front Immunol	WB,IHC

## Stockage

Stockage:

Stocker à -20°C. Stable pendant un an après l'expédition.

Tampon de stockage:

PBS avec azoture de sodium à 0,02 % et glycérol à 50 % pH 7,3

L'aliquotage n'est pas nécessaire pour le stockage à -20C

\*\*\* Les 20ul contiennent 0,1% de BSA.

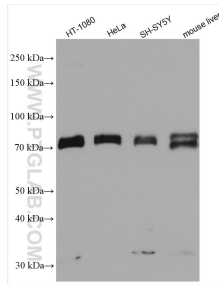
For technical support and original validation data for this product please contact:

T: 1 (888) 4PTGLAB (1-888-478-4522) (toll free in USA), or 1(312) 455-8498 (outside USA)

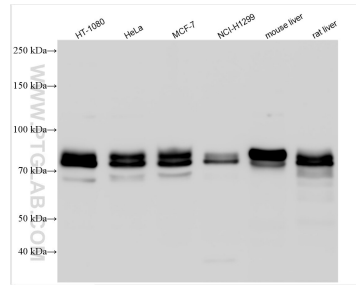
E: proteintech@ptglab.com  
W: ptglab.com

This product is exclusively available under Proteintech Group brand and is not available to purchase from any other manufacturer.

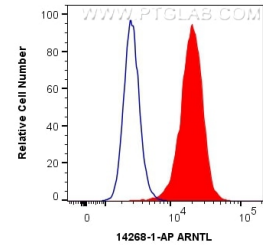
## Données de validation sélectionnées



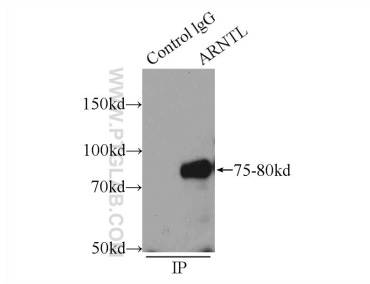
Various lysates were subjected to SDS PAGE followed by western blot with 14268-1-AP (ARNTL antibody) at dilution of 1:2500 incubated at room temperature for 1.5 hours.



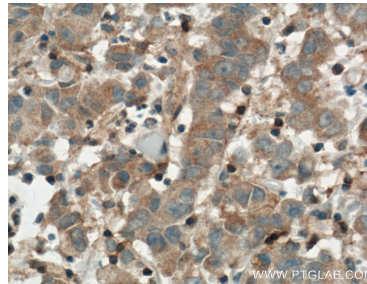
Various lysates were subjected to SDS PAGE followed by western blot with 14268-1-AP (ARNTL antibody) at dilution of 1:5000 incubated at room temperature for 1.5 hours.



1X10<sup>6</sup> HeLa cells were intracellularly stained with 0.4 ug Anti-Human ARNTL (14268-1-AP) and CoraLite@488-Conjugated AffiniPure Goat Anti-Rabbit IgG(H+L) at dilution 1:1000 (red), or 0.4 ug Control Antibody. Cells were fixed with 4% PFA and permeabilized with Flow Cytometry Perm Buffer (PF00011-C).



IP Result of anti-ARNTL (IP:14268-1-AP, 4ug; Detection:14268-1-AP 1:300) with HeLa cells lysate 1600ug.



Immunohistochemical analysis of paraffin-embedded human prostate cancer tissue slide using 14268-1-AP (ARNTL Antibody) at dilution of 1:200 (under 40x lens). Heat mediated antigen retrieval with Tris-EDTA buffer (pH 9.0).