

À des fins de recherche uniquement

Anticorps Polyclonal de lapin anti-COG6



Numéro de catalogue: 14277-1-AP

Informations de base

Numéro de catalogue:

14277-1-AP

Taille:

150ul, Concentration: 600 µg/ml by Nanodrop;

Hôte:

Lapin

Isotype:

IgG

Immunogen Catalog Number:

AG5624

Numéro d'acquisition GenBank:

BC051723

Identification du gène (NCBI):

57511

Nom complet:

component of oligomeric golgi complex 6

MW calculé

73 kDa

MW observés:

73 kDa

Méthode de purification:

Purification par affinité contre l'antigène

Dilutions recommandées:

WB 1:500-1:2000

IF 1:10-1:100

Applications

Applications testées:

FC, IF, WB, ELISA

Spécificité de l'espèce:

Humain, rat, souris

Contrôles positifs:

WB : tissu cérébral humain, cellules HEK-293, cellules HeLa, cellules HepG2, cellules Jurkat, cellules NIH/3T3

IF : cellules MCF-7, cellules HeLa

Informations générales

Stockage

Stockage:

Stocker à -20°C. Stable pendant un an après l'expédition.

Tampon de stockage:

PBS avec azoture de sodium à 0,02 % et glycérol à 50 % pH 7,3

L'aliquotage n'est pas nécessaire pour le stockage à -20C

*** Les 20ul contiennent 0,1% de BSA.

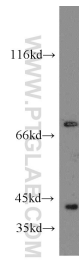
For technical support and original validation data for this product please contact:

T: 1 (888) 4PTGLAB (1-888-478-4522) (toll free in USA), or 1(312) 455-8498 (outside USA)

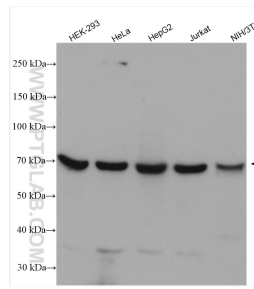
E: proteintech@ptglab.com
W: ptglab.com

This product is exclusively available under Proteintech Group brand and is not available to purchase from any other manufacturer.

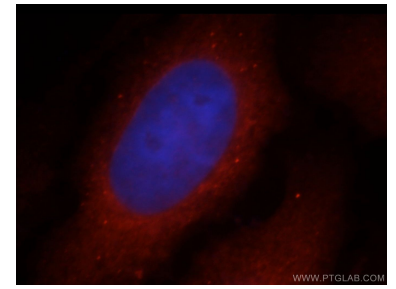
Données de validation sélectionnées



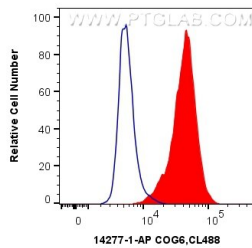
human brain tissue were subjected to SDS PAGE followed by western blot with 14277-1-AP (COG6 antibody) at dilution of 1:300 incubated at room temperature for 1.5 hours.



Various lysates were subjected to SDS PAGE followed by western blot with 14277-1-AP (COG6 antibody) at dilution of 1:2000 incubated at room temperature for 1.5 hours.



Immunofluorescent analysis of MCF-7 cells, using COG6 antibody 14277-1-AP at 1:25 dilution and Rhodamine-labeled goat anti-rabbit IgG (red). Blue pseudocolor = DAPI (fluorescent DNA dye).



1X10⁶ HeLa cells were intracellularly stained with 0.4 ug Anti-Human COG6 (14277-1-AP) and CoraLite@488-Conjugated AffiniPure Goat Anti-Rabbit IgG(H+L) at dilution 1:1000 (red), or 0.4 ug Control Antibody. Cells were fixed with 4% PFA and permeabilized with Flow Cytometry Perm Buffer (PF00011-C).