

À des fins de recherche uniquement

Anticorps Polyclonal de lapin anti-CHST15



Numéro de catalogue: 14298-1-AP

Phare

4 Publications

Informations de base

Numéro de catalogue:

14298-1-AP

Taille:

150ul, Concentration: 500 µg/ml by Nanodrop;

Hôte:

Lapin

Isotype:

IgG

Immunogen Catalog Number:

AG5679

Numéro d'acquisition GenBank:

BC050540

Identification du gène (NCBI):

51363

Nom complet:

carbohydre (N-acetylgalactosamine 4-sulfate 6-O) sulfotransferase 15

MW calculé

65 kDa

MW observés:

49 kDa, 69 kDa

Méthode de purification:

Purification par affinité contre l'antigène

Dilutions recommandées:

WB 1:1000-1:4000

IP 0.5-4.0 ug for IP and 1:500-1:1000 for WB

Applications

Applications testées:

IP, WB, ELISA

Demandes citées:

IF, IHC, WB

Spécificité de l'espèce:

Humain, rat, souris

Espèces citées:

Humain, souris

Contrôles positifs:

WB : cellules Jurkat, cellules Raji, cellules U-937, tissu cardiaque de rat, tissu cardiaque de souris, tissu splénique de souris

IP : cellules Raji,

Informations générales

Carbohydrate sulfotransferase 15, also known as CHST15, BRAG, GALNAC4S6ST and KIAA0598, is a single-pass type II membrane protein which belongs to the sulfotransferase 1 family. CHST15 is a sulfotransferase that transfers sulfate from 3'-phosphoadenosine 5'-phosphosulfate (PAPS) to the C-6 hydroxyl group of the GalNAc 4-sulfate residue of chondroitin sulfate A and forms chondroitin sulfate E containing GlcA-GalNAc(4,6-SO₄) repeating units. It also transfers sulfate to a unique non-reducing terminal sequence, GalNAc(4SO₄)-GlcA(2SO₄)-GalNAc(6SO₄), to yield a highly sulfated structure similar to the structure found in thrombomodulin chondroitin sulfate. CHST15 may also act as a B-cell receptor involved in BCR ligation-mediated early activation that mediate regulatory signals key to B-cell development and / or regulation of B-cell-specific RAG expression. CHST15 is expressed in B-cell-enriched tissues but not in fetal or adult thymus. It is expressed in fetal and adult spleen, lymph node, tonsil, bone marrow and peripheral leukocytes. It can be detected as 49 kDa and 69 kDa.

Publications notables

Autrice	Pubmed ID	Journal	Application
Matthew R Blake	35604022	Elife	WB
Mingxiu Luo	24857976	Osteoarthritis Cartilage	IHC
Yang Sun	35434026	Ann Transl Med	IF

Stockage

Stockage:

Stocker à -20°C. Stable pendant un an après l'expédition.

Tampon de stockage:

PBS avec azoture de sodium à 0,02 % et glycérol à 50 % pH 7,3

L'aliquotage n'est pas nécessaire pour le stockage à -20C

*** Les 20ul contiennent 0,1% de BSA.

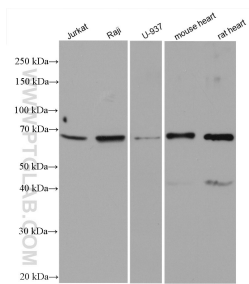
For technical support and original validation data for this product please contact:

T: 1 (888) 4PTGLAB (1-888-478-4522) (toll free in USA), or 1(312) 455-8498 (outside USA)

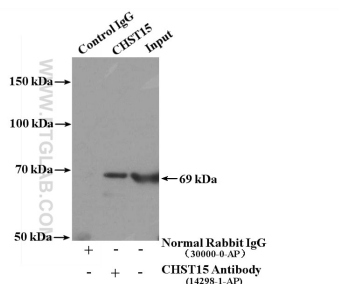
E: proteintech@ptglab.com
W: ptglab.com

This product is exclusively available under Proteintech Group brand and is not available to purchase from any other manufacturer.

Données de validation sélectionnées



Various lysates were subjected to SDS PAGE followed by western blot with 14298-1-AP (CHST15 antibody) at dilution of 1:2000 incubated at room temperature for 1.5 hours.



IP Result of anti-CHST15 (IP:14298-1-AP, 4ug; Detection:14298-1-AP 1:500) with Raji cells lysate 3200ug.