

À des fins de recherche uniquement

Anticorps Polyclonal de lapin anti-Caspase 10/p23/17/p12



Numéro de catalogue: 14311-1-AP

2 Publications

Informations de base

Numéro de catalogue:

14311-1-AP

Taille:

150ul , Concentration: 200 µg/ml by Nanodrop and 133 µg/ml by Bradford method using BSA as the standard;

Hôte:

Lapin

Isotype:

IgG

Immunogen Catalog Number:

AG5511

Numéro d'acquisition GenBank:

BC042844

Identification du gène (NCBI):

843

Nom complet:

caspase 10, apoptosis-related cysteine peptidase

MW calculé

59 kDa

MW observés:

59 kDa

Méthode de purification:

Purification par affinité contre l'antigène

Dilutions recommandées:

WB 1:500-1:1000

IP 0.5-4.0 ug for IP and 1:200-1:1000 for WB

IHC 1:20-1:200

IF 1:20-1:200

Applications

Applications testées:

IF, IHC, IP, WB, ELISA

Demandes citées:

WB

Spécificité de l'espèce:

Humain

Espèces citées:

Humain

Remarque-IHC: il est suggéré de démasquer l'antigène avec un tampon de TE buffer pH 9,0; (*) A défaut, 'le démasquage de l'antigène peut être 'effectué avec un tampon citrate pH 6,0.

Contrôles positifs:

WB : cellules HeLa, apoptosées

IP : cellules HeLa,

IHC : tissu de cancer de l'endomètre humain,

IF : cellules HepG2,

Informations générales

CASP10(Caspase-10) is also named as MCH4 and belongs to the peptidase C14A family. It is recruited to the CD99 and p55 tumor necrosis factor receptor signaling complexes and promoting CD95 (APO1/Fas) apoptosis. It may also play a critical role in PTK7-knockdown-induced apoptosis, downstream of mitochondria(PMID:21103379). This protein can be Cleavage by granzyme B and autocatalytic activity generate two active subunits. Defects in CASP10 are the cause of autoimmune lymphoproliferative syndrome type 2A (ALPS2A)(PMID:16446975), familial non-Hodgkin lymphoma (NHL)(PMID:12010812) and gastric cancer (GASC)(PMID:11973654). The full length has a propeptide with 219 amino acid and 6 isoforms produced by alternative splicing.

Publications notables

Autrice	Pubmed ID	Journal	Application
Bei Wang	34046026	Front Microbiol	WB
Ting Wang	33927626	Front Pharmacol	WB

Stockage

Stockage:

Stocker à -20°C. Stable pendant un an après l'expédition.

Tampon de stockage:

PBS avec azoture de sodium à 0,02 % et glycérol à 50 % pH 7,3

L'aliquotage n'est pas nécessaire pour le stockage à -20C

*** Les 20ul contiennent 0,1% de BSA.

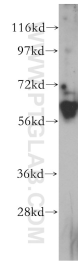
For technical support and original validation data for this product please contact:

T: 1 (888) 4PTGLAB (1-888-478-4522) (toll free in USA), or 1(312) 455-8498 (outside USA)

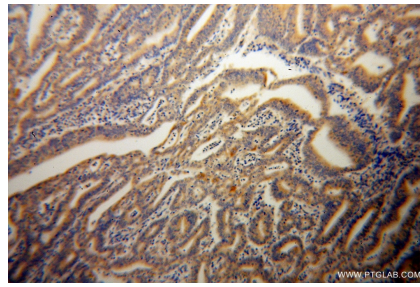
E: proteintech@ptglab.com
W: ptglab.com

This product is exclusively available under Proteintech Group brand and is not available to purchase from any other manufacturer.

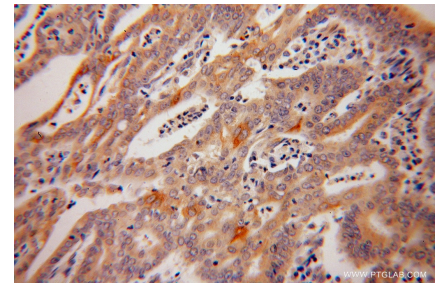
Données de validation sélectionnées



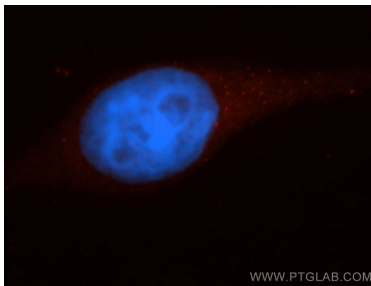
HeLa cells were subjected to SDS PAGE followed by western blot with 14311-1-AP (CASP10 antibody) at dilution of 1:300 incubated at room temperature for 1.5 hours.



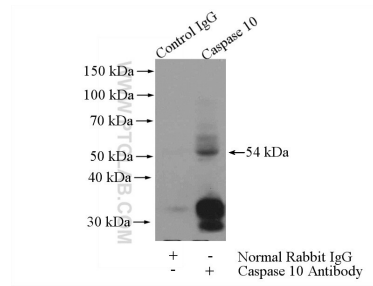
Immunohistochemical analysis of paraffin-embedded human endometrial cancer using 14311-1-AP (CASP10 antibody) at dilution of 1:100 (under 10x lens).



Immunohistochemical analysis of paraffin-embedded human endometrial cancer using 14311-1-AP (CASP10 antibody) at dilution of 1:100 (under 40x lens).



Immunofluorescent analysis of HepG2 cells, using CASP10 antibody 14311-1-AP at 1:50 dilution and Rhodamine-labeled goat anti-rabbit IgG (red). Blue pseudocolor = DAPI (fluorescent DNA dye).



IP Result of anti-Caspase 10/p23/17/p12 (IP:14311-1-AP, 4ug; Detection:14311-1-AP 1:300) with HeLa cells lysate 3200ug.