

À des fins de recherche uniquement

# Anticorps Polyclonal de lapin anti-SLC38A3



Numéro de catalogue: 14315-1-AP

Phare

17 Publications

## Informations de base

Numéro de catalogue:

14315-1-AP

Taille:

150ul, Concentration: 350 µg/ml by Nanodrop;

Hôte:

Lapin

Isotype:

IgG

Immunogen Catalog Number:

AG5553

Numéro d'acquisition GenBank:

BC042875

Identification du gène (NCBI):

10991

Nom complet:

solute carrier family 38, member 3

MW calculé

504 aa, 56 kDa

MW observés:

65-70 kDa

Méthode de purification:

Purification par affinité contre l'antigène

Dilutions recommandées:

WB 1:500-1:2400

IP 0.5-4.0 ug for IP and 1:500-1:2000 for WB

IHC 1:20-1:200

IF 1:50-1:500

## Applications

Applications testées:

FC, IF, IHC, IP, WB, ELISA

Demandes citées:

CoIP, IF, IHC, IP, WB

Spécificité de l'espèce:

Humain, souris

Espèces citées:

Humain, souris

**Remarque-IHC: il est suggéré de démasquer l'antigène avec un tampon de TE buffer pH 9,0; (\*) À défaut, le démasquage de l'antigène peut être effectué avec un tampon citrate pH 6,0.**

Contrôles positifs:

WB : cellules HeLa, cellules BGC-823, cellules HEK-293, cellules Raji, tissu cardiaque humain, tissu cérébral de souris, tissu hépatique de souris, tissu pancréatique de souris

IP : tissu cardiaque de souris,

IHC : tissu de cancer du poumon humain,

IF : cellules HEK-293,

## Informations générales

SLC38A3, also known as SNAT3 or SN1, belongs to the SLC38 family of sodium-coupled neutral amino acid transporters. SLC38A3 mediates glutamine transport with sodium and proton coupled manner, and it contributes to ammonia metabolism in the liver and brain. SLC38A3 is highly expressed in the liver and brain astrocytes, with modest expression in the kidney, heart, and muscle. SLC38A3 may migrate higher than the predicted 56 kDa due to the glycosylation.

## Publications notables

Autrice	Pubmed ID	Journal	Application
Heather M Sosnoski	33199267	Neurochem Int	WB
Katarzyna Dąbrowska	34681893	Int J Mol Sci	WB,IF,CoIP
Magdalena Zielińska	26442479	J Neurochem	WB

## Stockage

Stockage:

Stocker à -20°C. Stable pendant un an après l'expédition.

Tampon de stockage:

PBS avec azoture de sodium à 0,02 % et glycérol à 50 % pH 7,3

L'aliquotage n'est pas nécessaire pour le stockage à -20C

\*\*\* Les 20ul contiennent 0,1% de BSA.

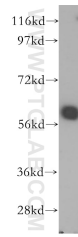
For technical support and original validation data for this product please contact:

T: 1 (888) 4PTGLAB (1-888-478-4522) (toll free in USA), or 1(312) 455-8498 (outside USA)

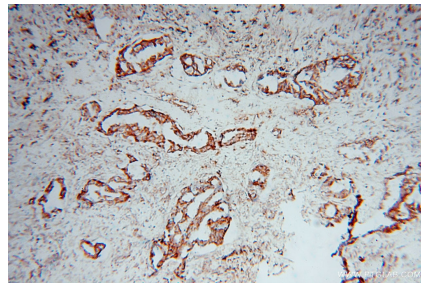
E: [proteintech@ptglab.com](mailto:proteintech@ptglab.com)  
W: [ptglab.com](http://ptglab.com)

This product is exclusively available under Proteintech Group brand and is not available to purchase from any other manufacturer.

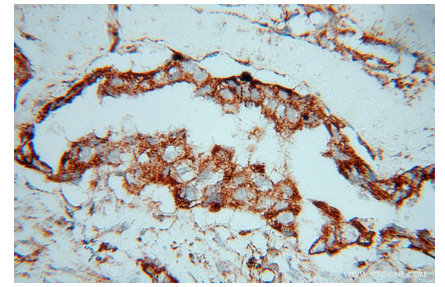
## Données de validation sélectionnées



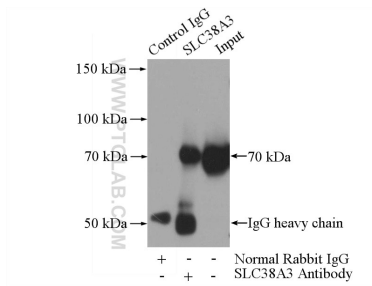
HeLa cells were subjected to SDS PAGE followed by western blot with 14315-1-AP (SLC38A3 antibody) at dilution of 1:400 incubated at room temperature for 1.5 hours.



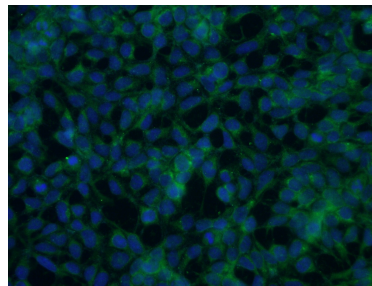
Immunohistochemical analysis of paraffin-embedded human lung cancer using 14315-1-AP (SLC38A3 antibody) at dilution of 1:100 (under 10x lens).



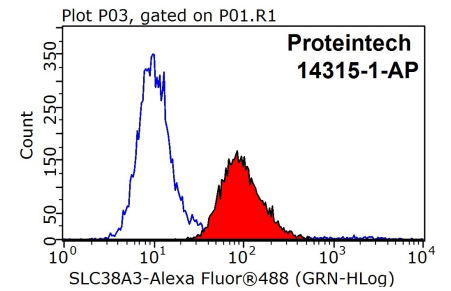
Immunohistochemical analysis of paraffin-embedded human lung cancer using 14315-1-AP (SLC38A3 antibody) at dilution of 1:100 (under 40x lens).



IP Result of anti-SLC38A3 (IP:14315-1-AP, 3ug; Detection:14315-1-AP 1:1000) with mouse heart tissue lysate 4000ug.



Immunofluorescent analysis of (-20°C Ethanol) fixed HEK-293 cells using 14315-1-AP (SLC38A3 antibody) at dilution of 1:50 and Alexa Fluor 488-conjugated AffiniPure Goat Anti-Rabbit IgG(H+L).



1X10<sup>6</sup> HeLa cells were stained with 0.2ug SLC38A3 antibody (14315-1-AP, red) and control antibody (blue). Fixed with 90% MeOH blocked with 3% BSA (30 min). Alexa Fluor 488-conjugated AffiniPure Goat Anti-Rabbit IgG(H+L) with dilution 1:1000.