

À des fins de recherche uniquement

Anticorps Polyclonal de lapin anti-SOD3



Numéro de catalogue: 14316-1-AP

3 Publications

Informations de base

Numéro de catalogue:

14316-1-AP

Taille:

150ul, Concentration: 500 µg/ml by Nanodrop;

Hôte:

Lapin

Isotype:

IgG

Immunogen Catalog Number:

AG5556

Numéro d'acquisition GenBank:

BC014418

Identification du gène (NCBI):

6649

Nom complet:

superoxide dismutase 3, extracellular

MW calculé

26 kDa

MW observés:

25-33 kDa

Méthode de purification:

Purification par affinité contre l'antigène

Dilutions recommandées:

WB 1:1000-1:4000

IP 0.5-4.0 µg for IP and 1:500-1:2000 for WB

Applications

Applications testées:

IP, WB, ELISA

Demandes citées:

WB

Spécificité de l'espèce:

Humain

Espèces citées:

Humain, rat, souris

Contrôles positifs:

WB : échantillon d'urine humaine, tissu cardiaque humain, tissu placentaire humain, urine humaine

IP : tissu placentaire humain,

Informations générales

SOD is located intracellular (SOD-1; cytosolic, SOD-2; mitochondrial matrix) and extracellular (SOD-3), and catalyzes the dismutation of superoxide anion to H₂O₂. SOD₃, or EC-SOD, is the most recently characterized SOD, exists as a copper and zinc-containing tetramer, and is synthesized containing a signal peptide that directs this enzyme exclusively to extracellular spaces. SOD-3 is a Mn-containing tetrameric protein with a subunit Mr of 24-35 kDa. The activity of EC-SOD is dependent on its ability to form a tetramer of 135 kDa.

Publications notables

Autrice	Pubmed ID	Journal	Application
Xue Tian	34403689	Toxicol Appl Pharmacol	WB
Ai Wei	34378791	Br J Pharmacol	WB
Gedong Ming	34584879	Transl Pediatr	WB

Stockage

Stockage:

Stocker à -20°C. Stable pendant un an après l'expédition.

Tampon de stockage:

PBS avec azoture de sodium à 0,02 % et glycérol à 50 % pH 7,3

L'aliquotage n'est pas nécessaire pour le stockage à -20C

*** Les 20ul contiennent 0,1% de BSA.

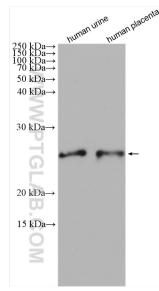
For technical support and original validation data for this product please contact:

T: 1 (888) 4PTGLAB (1-888-478-4522) (toll free in USA), or 1(312) 455-8498 (outside USA)

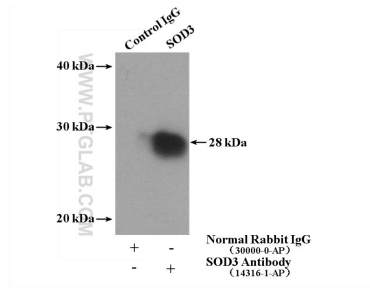
E: proteintech@ptglab.com
W: ptglab.com

This product is exclusively available under Proteintech Group brand and is not available to purchase from any other manufacturer.

Données de validation sélectionnées



Various lysates were subjected to SDS PAGE followed by western blot with 14316-1-AP (SOD3 antibody) at dilution of 1:2000 incubated at room temperature for 1.5 hours.



IP Result of anti-SOD3 (IP:14316-1-AP, 4ug; Detection:14316-1-AP 1:1000) with human placenta tissue lysate 2800ug.