

À des fins de recherche uniquement

Anticorps Polyclonal de lapin anti-CADM1



Numéro de catalogue: 14335-1-AP

3 Publications

Informations de base

Numéro de catalogue: 14335-1-AP	Numéro d'acquisition GenBank: BC047021	Méthode de purification: Purification par affinité contre l'antigène
Taille: 150ul , Concentration: 280 µg/ml by Nanodrop;	Identification du gène (NCBI): 23705	Dilutions recommandées: WB 1:500-1:1000
Hôte: Lapin	Nom complet: cell adhesion molecule 1	
Isotype: IgG	MW calculé 49 kDa	
Immunogen Catalog Number: AG5621	MW observés: 49-60 kDa	

Applications

Applications testées: WB, ELISA	Contrôles positifs: WB : tissu hépatique de souris, cellules A549, tissu placentaire humain, tissu pulmonaire de souris
Demandes citées: WB	
Spécificité de l'espèce: Humain, rat, souris	
Espèces citées: Humain, souris	

Informations générales

CADM1 (cell adhesion molecule 1), also referred to as SglGSF, Necl-2 or TSLC-1, is a cell adhesion molecule belonging to the immunoglobulin superfamily. It can mediate homophilic and heterophilic cell-cell adhesion. CADM1 is expressed by a variety of cells including neurons, mast cells, spermatogonia, pancreatic islet cells, epithelial cells such as lung alveolar cells and biliary epithelial cells. CADM1 is involved in carcinoma pathogenesis and the expression of CADM1 is frequently down-regulated in various tumors derived from epithelial cells. It acts as a tumor suppressor in non-small-cell lung cancer (NSCLC) cells. (PMID: 18332875; 17326163; 20340131)

Publications notables

Autrice	Pubmed ID	Journal	Application
Yujun Li	31819525	Onco Targets Ther	WB
Zhu Ying Y	23700466	PLoS One	WB
Haiqing Cai	30013657	Oncol Lett	WB

Stockage

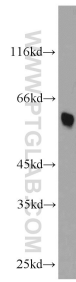
Stockage:
Stocker à -20°C. Stable pendant un an après l'expédition.
Tampon de stockage:
PBS avec azoture de sodium à 0,02 % et glycérol à 50 % pH 7,3
L'aliquotage n'est pas nécessaire pour le stockage à -20C

*** Les 20ul contiennent 0,1% de BSA.

For technical support and original validation data for this product please contact:
T: 1 (888) 4PTGLAB (1-888-478-4522) (toll free in USA), or 1(312) 455-8498 (outside USA)
E: proteintech@ptglab.com
W: ptglab.com

This product is exclusively available under Proteintech Group brand and is not available to purchase from any other manufacturer.

Données de validation sélectionnées



mouse liver tissue were subjected to SDS PAGE followed by western blot with 14335-1-AP (CADM1 antibody) at dilution of 1:1000 incubated at room temperature for 1.5 hours.