

À des fins de recherche uniquement

Anticorps Polyclonal de lapin anti-DIAPH3



Numéro de catalogue: 14342-1-AP

Phare

20 Publications

Informations de base

Numéro de catalogue:
14342-1-AP

Taille:
150ul, Concentration: 700 µg/ml by
Nanodrop;

Hôte:
Lapin

Isotype:
IgG

Immunogen Catalog Number:
AG5656

Numéro d'acquisition GenBank:
BC048963

Identification du gène (NCBI):
81624

Nom complet:
diaphanous homolog 3 (Drosophila)

MW calculé
137 kDa

MW observés:
125-137 kDa

Méthode de purification:
Purification par affinité contre
l'antigène

Dilutions recommandées:
WB 1:500-1:2000
IP 0.5-4.0 ug for IP and 1:500-1:1000
for WB
IHC 1:50-1:500
IF 1:20-1:200

Applications

Applications testées:
IF, IHC, IP, WB, ELISA

Demandes citées:
IF, IHC, IP, WB

Spécificité de l'espèce:
Humain

Espèces citées:
Humain, souris

Contrôles positifs:

WB : cellules HeLa, cellules DU 145, cellules HEK-293

IP : cellules HeLa,

IHC : tissu testiculaire de souris, tissu de cancer de la prostate humain, tissu de cancer du col de l'utérus humain, tissu testiculaire de rat

IF : cellules HeLa,

Remarque-IHC: il est suggéré de démasquer l'antigène avec un tampon de TE buffer pH 9,0; (*) À défaut, le démasquage de l'antigène peut être effectué avec un tampon citrate pH 6,0.

Informations générales

DIAPH3 is also referred as diaphanous-related formin-3 which binds to GTP-bound form of Rho and to profilin, acts in a Rho-dependent manner to recruit profilin to the membrane. It is required for cytokinesis, stress fiber formation, and transcriptional activation of the serum response factor. Seven isoforms of DIAPH3 exist due to the alternative splicing. Recently it has been reported that dimerization and actin assembly activity of DIAPH3 isoforms 1 and 7 are essential for induction of specific cell protrusions. It may propose that isoform-selective actin assembly by DIAPH3 exerts specific and differentially regulated functions during cell adhesion and motility.

Publications notables

Autrice	Pubmed ID	Journal	Application
Esmeralda Castelblanco	27796194	Thyroid	
Renli Huang	35538918	Cancer Med	WB,IHC
Kathryn N Becker	35563863	Cells	WB

Stockage

Stockage:

Stocker à -20°C. Stable pendant un an après l'expédition.

Tampon de stockage:

PBS avec azoture de sodium à 0,02 % et glycérol à 50 % pH 7,3

L'aliquotage n'est pas nécessaire pour le stockage à -20C

*** Les 20ul contiennent 0,1% de BSA.

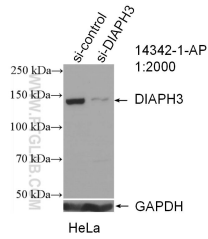
For technical support and original validation data for this product please contact:

T: 1 (888) 4PTGLAB (1-888-478-4522) (toll free in USA), or 1(312) 455-8498 (outside USA)

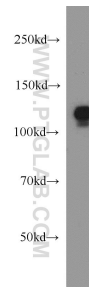
E: proteintech@ptglab.com
W: ptglab.com

This product is exclusively available under Proteintech Group brand and is not available to purchase from any other manufacturer.

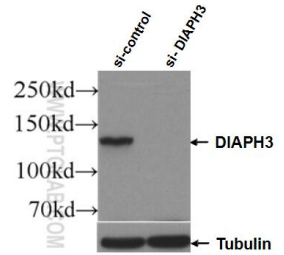
Données de validation sélectionnées



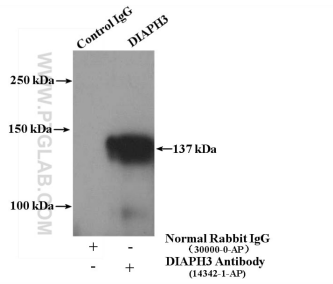
WB result of DIAPH3 antibody (14342-1-AP; 1:2000; incubated at room temperature for 1.5 hours) with sh-Control and sh-DIAPH3 transfected HeLa cells.



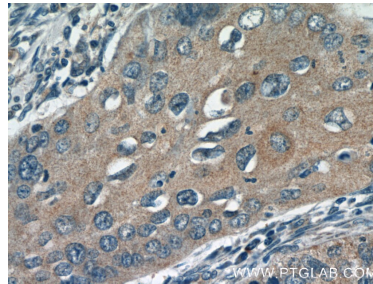
HeLa cells were subjected to SDS PAGE followed by western blot with 14342-1-AP (DIAPH3 antibody) at dilution of 1:1000 incubated at room temperature for 1.5 hours.



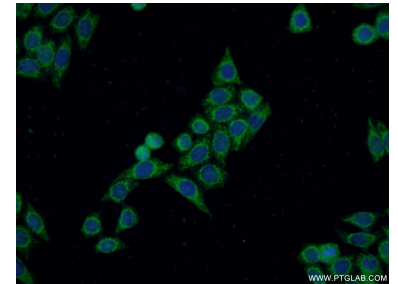
WB result of DIAPH3 antibody (14342-1-AP; 1:1000; incubated at room temperature for 1.5 hours) with sh-Control and sh-DIAPH3 transfected HEK-293 cells.



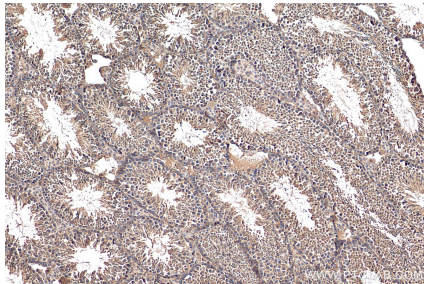
IP Result of anti-DIAPH3 (IP:14342-1-AP, 4 μ g; Detection:14342-1-AP 1:500) with HeLa cells lysate 2000 μ g.



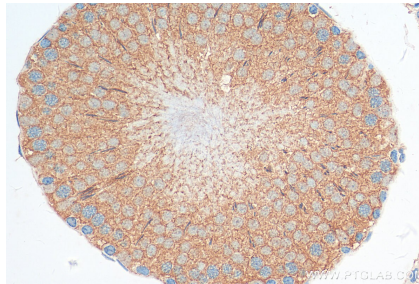
Immunohistochemical analysis of paraffin-embedded human cervical cancer tissue slide using 14342-1-AP (DIAPH3 Antibody) at dilution of 1:50.



Immunofluorescent analysis of HeLa cells using 14342-1-AP (DIAPH3 antibody) at dilution of 1:50 and Alexa Fluor 488-conjugated AffiniPure Goat Anti-Rabbit IgG(H+L).



Immunohistochemical analysis of paraffin-embedded mouse testis tissue slide using 14342-1-AP (DIAPH3 antibody) at dilution of 1:200 (under 10x lens). Heat mediated antigen retrieval with Tris-EDTA buffer (pH 9.0).



Immunohistochemical analysis of paraffin-embedded rat testis tissue slide using 14342-1-AP (DIAPH3 antibody) at dilution of 1:200 (under 40x lens). Heat mediated antigen retrieval with Tris-EDTA buffer (pH 9.0).