

À des fins de recherche uniquement

Anticorps Polyclonal de lapin anti-NUB1



Numéro de catalogue: 14343-1-AP

3 Publications

Informations de base

Numéro de catalogue:

14343-1-AP

Taille:

150ul, Concentration: 380 µg/ml by Nanodrop and 373 µg/ml by Bradford method using BSA as the standard;

Hôte:

Lapin

Isotype:

IgG

Immunogen Catalog Number:

AG5668

Numéro d'acquisition GenBank:

BC046354

Identification du gène (NCBI):

51667

Nom complet:

negative regulator of ubiquitin-like proteins 1

MW calculé

71 kDa

MW observés:

69 kDa

Méthode de purification:

Purification par affinité contre l'antigène

Dilutions recommandées:

WB 1:500-1:1000

IP 0.5-4.0 ug for IP and 1:500-1:1000 for WB

Applications

Applications testées:

IP, WB, ELISA

Demandes citées:

IF, IHC, WB

Spécificité de l'espèce:

Humain, rat, souris

Espèces citées:

Humain, souris

Contrôles positifs:

WB : cellules HeLa, cellules COLO 320, cellules HepG2, cellules K-562, cellules Raji, tissu rénal de souris

IP : cellules HEK-293,

Informations générales

Proteasome-associated protein NEDD8 ultimate buster 1 (NUB1) is an interferon-inducible protein that down-regulates NEDD8 expression and its conjugation system. Over-expression of NUB1 induces a growth-inhibitory effect in cells, and it mediates anti-proliferative actions and apoptosis in renal cell carcinoma cells through cell-cycle regulation. Expression of NUB1 leads to decreased modification of p53 with NEDD8 and stimulation of p53 ubiquitination. Recent finding revealed that NUB1, by regulating GSK3β levels, modulates tau phosphorylation and aggregation, and is a key player in neurodegeneration associated with tau pathology.

Publications notables

Autrice	Pubmed ID	Journal	Application
Kunikazu Tanji	26797281	Biochem Biophys Res Commun	WB, IF
Fumiaki Mori	24812700	Neuropathology	IHC
Kunikazu Tanji	31006160	Brain Pathol	WB

Stockage

Stockage:

Stocker à -20°C. Stable pendant un an après l'expédition.

Tampon de stockage:

PBS avec azoture de sodium à 0,02 % et glycérol à 50 % pH 7,3

L'aliquotage n'est pas nécessaire pour le stockage à -20C

*** Les 20ul contiennent 0,1% de BSA.

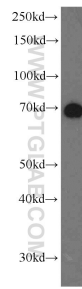
For technical support and original validation data for this product please contact:

T: 1 (888) 4PTGLAB (1-888-478-4522) (toll free in USA), or 1(312) 455-8498 (outside USA)

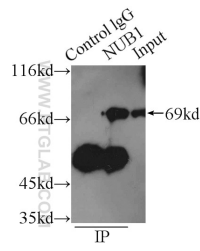
E: proteintech@ptglab.com
W: ptglab.com

This product is exclusively available under Proteintech Group brand and is not available to purchase from any other manufacturer.

Données de validation sélectionnées



HeLa cells were subjected to SDS PAGE followed by western blot with 14343-1-AP (NUB1 antibody) at dilution of 1:600 incubated at room temperature for 1.5 hours.



IP Result of anti-NUB1 (IP:14343-1-AP, 3ug; Detection:14343-1-AP 1:600) with HEK-293 cells lysate 2500ug.