

À des fins de recherche uniquement

# Anticorps Polyclonal de lapin anti-MEF2D



Numéro de catalogue: 14353-1-AP

Phare

10 Publications

## Informations de base

Numéro de catalogue:  
14353-1-AP

Taille:  
150ul, Concentration: 500 µg/ml by  
Nanodrop and 240 µg/ml by Bradford  
method using BSA as the standard;

Hôte:  
Lapin

Isotype:  
IgG

Immunogen Catalog Number:  
AG5700

Numéro d'acquisition GenBank:  
BC040949

Identification du gène (NCBI):  
4209

Nom complet:  
myocyte enhancer factor 2D

MW calculé  
56 kDa

MW observés:  
55-60 kDa

Méthode de purification:  
Purification par affinité contre  
l'antigène

Dilutions recommandées:  
WB 1:500-1:1000  
IHC 1:200-1:800  
IF 1:50-1:500

## Applications

Applications testées:  
IF, IHC, WB, ELISA

Demandes citées:  
IF, IHC, WB

Spécificité de l'espèce:  
Humain, souris

Espèces citées:  
Humain, rat, souris

**Remarque-IHC: il est suggéré de démasquer  
l'antigène avec un tampon de TE buffer pH  
9,0; (\*) À défaut, 'le démasquage de  
l'antigène peut être 'effectué avec un  
tampon citrate pH 6,0.**

Contrôles positifs:

WB : cellule C2C12, cellules HeLa

IHC : tissu cérébral de souris,

IF : cellules HeLa,

## Informations générales

MEF2D, also named as Myocyte-specific enhancer factor 2D, is a 521 amino acid protein, which belongs to the MEF2 family. MEF2D is expressed in t in myotubes and also in undifferentiated myoblasts. MEF2D as a transcriptional activator which binds specifically to the MEF2 element, found in numerous muscle-specific and stress-induced genes. MEF2D mediates cellular functions not only in skeletal and cardiac muscle development, but also in neuronal differentiation and survival. The calculated molecular weight of MEF2D is 55 kDa, but Phosphorylated MEF2D is 60 kDa.

## Publications notables

Autrice	Pubmed ID	Journal	Application
Yuji Shiozaki	34517786	Autophagy	WB
Jiali Nie	30488495	J Cell Physiol	WB
Shali Yu	35305351	Ecotoxicol Environ Saf	WB

## Stockage

Stockage:

Stocker à -20°C. Stable pendant un an après l'expédition.

Tampon de stockage:

PBS avec azoture de sodium à 0,02 % et glycérol à 50 % pH 7,3

L'aliquotage n'est pas nécessaire pour le stockage à -20C

\*\*\* Les 20ul contiennent 0,1% de BSA.

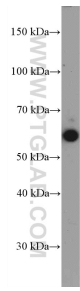
For technical support and original validation data for this product please contact:

T: 1 (888) 4PTGLAB (1-888-478-4522) (toll free  
in USA), or 1(312) 455-8498 (outside USA)

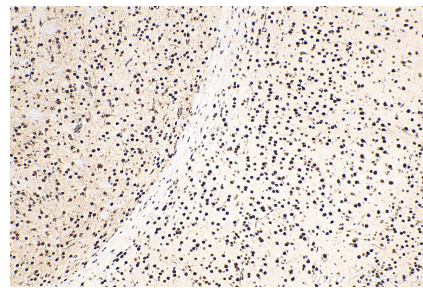
E: proteintech@ptglab.com  
W: ptglab.com

This product is exclusively available under Proteintech Group brand and is not available to purchase from any other manufacturer.

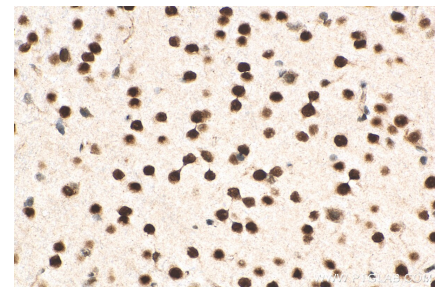
## Données de validation sélectionnées



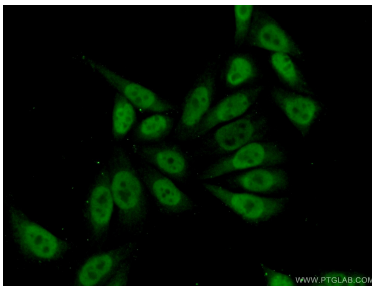
C2C12 cells were subjected to SDS PAGE followed by western blot with 14353-1-AP (MEF2D Antibody) at dilution of 1:600 incubated at room temperature for 1.5 hours.



Immunohistochemical analysis of paraffin-embedded mouse brain tissue slide using 14353-1-AP (MEF2D antibody) at dilution of 1:400 (under 10x lens). Heat mediated antigen retrieval with Tris-EDTA buffer (pH 9.0).



Immunohistochemical analysis of paraffin-embedded mouse brain tissue slide using 14353-1-AP (MEF2D antibody) at dilution of 1:400 (under 40x lens). Heat mediated antigen retrieval with Tris-EDTA buffer (pH 9.0).



Immunofluorescent analysis of (10% Formaldehyde) fixed HeLa cells using 14353-1-AP (MEF2D antibody) at dilution of 1:50 and Alexa Fluor 488-conjugated AffiniPure Goat Anti-Rabbit IgG(H+L).