

À des fins de recherche uniquement

# Anticorps Polyclonal de lapin anti-USP15



Numéro de catalogue: 14354-1-AP

Phare

16 Publications

## Informations de base

Numéro de catalogue:

14354-1-AP

Taille:

150ul, Concentration: 600 µg/ml by Nanodrop;

Hôte:

Lapin

Isotype:

IgG

Immunogen Catalog Number:

AG5703

Numéro d'acquisition GenBank:

BC020688

Identification du gène (NCBI):

9958

Nom complet:

ubiquitin specific peptidase 15

MW calculé

112 kDa

MW observés:

112 kDa

Méthode de purification:

Purification par affinité contre l'antigène

Dilutions recommandées:

WB 1:2000-1:12000

IP 0.5-4.0 µg for IP and 1:500-1:2000 for WB

IHC 1:50-1:500

## Applications

Applications testées:

IHC, IP, WB, ELISA

Demandes citées:

CoIP, IF, IHC, IP, WB

Spécificité de l'espèce:

Humain, rat, souris

Espèces citées:

bovin, Humain, rat, souris

Contrôles positifs:

WB : cellules HEK-293, cellules HeLa, cellules HepG2, cellules K-562, cellules MCF-7, cellules NIH/3T3, tissu cérébral de rat, tissu cérébral de souris

IP : tissu cérébral de souris,

IHC : tissu de cancer du sein humain, tissu de carcinome à cellules rénales humain, tissu de tumeur ovarienne humain

**Remarque-IHC: il est suggéré de démasquer l'antigène avec un tampon de TE buffer pH 9,0; (\*) À défaut, le démasquage de l'antigène peut être effectué avec un tampon citrate pH 6,0.**

## Informations générales

Ubiquitin is a highly conserved eukaryotic protein that is synthesized as a fusion protein precursor, either to itself or to one of two ribosomal proteins. USP15, is also named as KIAA0529, Unph-2, Unph4, encoding a human ubiquitin-specific protease (USP). The USP15 protein contains the highly conserved Cys and His boxes present in all members of the UBP family of deubiquitinating enzymes (PMID:10444327). It has 3 isoforms produced by alternative splicing.

## Publications notables

Autrice	Pubmed ID	Journal	Application
Xinyao Tian	36163170	Cell Death Dis	WB,IP
Haihai Liang	31512556	Autophagy	WB
Yixuan Zhao	32671073	Front Cell Dev Biol	CoIP

## Stockage

Stockage:

Stocker à -20°C. Stable pendant un an après l'expédition.

Tampon de stockage:

PBS avec azoture de sodium à 0,02 % et glycérol à 50 % pH 7,3

L'aliquotage n'est pas nécessaire pour le stockage à -20C

\*\*\* Les 20ul contiennent 0,1% de BSA.

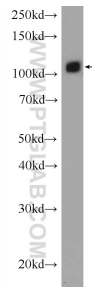
For technical support and original validation data for this product please contact:

T: 1 (888) 4PTGLAB (1-888-478-4522) (toll free in USA), or 1(312) 455-8498 (outside USA)

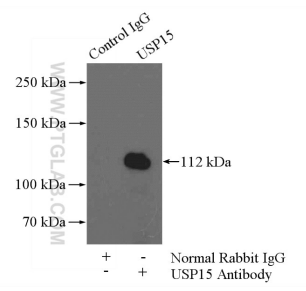
E: proteintech@ptglab.com  
W: ptglab.com

This product is exclusively available under Proteintech Group brand and is not available to purchase from any other manufacturer.

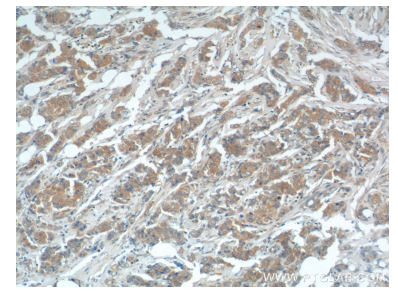
## Données de validation sélectionnées



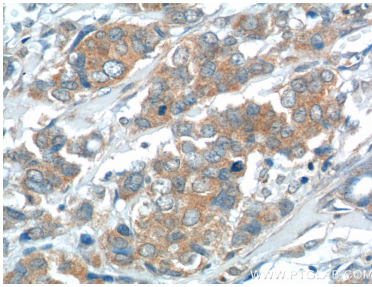
mouse brain tissue were subjected to SDS PAGE followed by western blot with 14354-1-AP (USP15 Antibody) at dilution of 1:1000 incubated at room temperature for 1.5 hours.



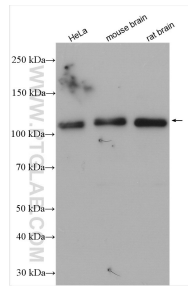
IP Result of anti-USP15 (IP:14354-1-AP, 4ug; Detection:14354-1-AP 1:1000) with mouse brain tissue lysate 4000ug.



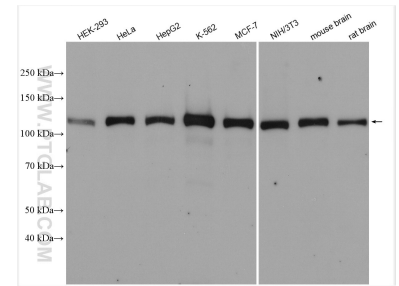
Immunohistochemical analysis of paraffin-embedded human breast cancer tissue slide using 14354-1-AP (USP15 Antibody) at dilution of 1:200 (under 10x lens).



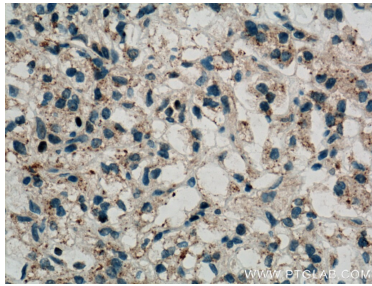
Immunohistochemical analysis of paraffin-embedded human breast cancer tissue slide using 14354-1-AP (USP15 Antibody) at dilution of 1:200 (under 40x lens).



HeLa cells were subjected to SDS PAGE followed by western blot with 14354-1-AP (USP15 antibody) at dilution of 1:4000 incubated at room temperature for 1.5 hours.



Various lysates were subjected to SDS PAGE followed by western blot with 14354-1-AP (USP15 antibody) at dilution of 1:6000 incubated at room temperature for 1.5 hours.



Immunohistochemical analysis of paraffin-embedded human renal cell carcinoma tissue slide using 14354-1-AP (USP15 Antibody) at dilution of 1:200 (under 40x lens). Heat mediated antigen retrieval with Tris-EDTA buffer (pH 9.0).