

À des fins de recherche uniquement

Anticorps Polyclonal de lapin anti-ST6GAL1



Numéro de catalogue: 14355-1-AP

Phare

10 Publications

Informations de base

Numéro de catalogue:
14355-1-AP

Taille:
150ul, Concentration: 350 µg/ml by Nanodrop and 333 µg/ml by Bradford method using BSA as the standard;

Hôte:
Lapin

Isotype:
IgG

Immunogen Catalog Number:
AG5705

Numéro d'acquisition GenBank:
BC040009

Identification du gène (NCBI):
6480

Nom complet:
ST6 beta-galactosamide alpha-2,6-sialyltransferase 1

MW calculé
47 kDa

MW observés:
43-45 kDa, 50-70 kDa

Méthode de purification:
Purification par affinité contre l'antigène

Dilutions recommandées:
WB 1:500-1:2000
IP 0.5-4.0 ug for IP and 1:500-1:1000 for WB
IHC 1:50-1:500

Applications

Applications testées:
FC, IHC, IP, WB, ELISA

Demandes citées:
IF, IHC, WB

Spécificité de l'espèce:
Humain, rat, souris

Espèces citées:
Humain, rat, souris

Remarque-IHC: il est suggéré de démasquer l'antigène avec un tampon de TE buffer pH 9,0; (*) À défaut, 'le démasquage de l'antigène peut être 'effectué avec un tampon citrate pH 6,0.

Contrôles positifs:

WB : cellules Ramos, cellules HepG2, cellules HuH-7, cellules Jurkat, cellules Raji, cellules U-937, tissu hépatique de rat, tissu hépatique de souris, tissu splénique de souris

IP : cellules Raji,

IHC : tissu cutané humain, tissu de cancer du côlon humain, tissu de tumeur ovarienne humain

Informations générales

ST6GAL1 (β -galactoside α -2-6 sialyl transferase1; also known as ST6N or CD75) is a sialyltransferase mediating the glycosylation of proteins and lipids to form functionally important glycoproteins and glycolipids in the Golgi compartment. It is principally expressed in liver, placenta and skeletal muscle. ST6GAL1 undergoes proteolytic process to generate soluble form from membrane form. Western blot analysis of human liver using this antibody detects both isoforms between 43-50 kDa. Higher molecular weight of bands around 50-70 kDa can also be observed with unknown reason. (PMID: 15049997)

Publications notables

Autrice	Pubmed ID	Journal	Application
Jun Wang	34745942	Front Oncol	WB
Ruijia Liu	36238765	J Inflamm Res	IHC,WB
Emma Kurz	34634466	Mol Cell Proteomics	IHC,IF

Stockage

Stockage:

Stocker à -20°C. Stable pendant un an après l'expédition.

Tampon de stockage:

PBS avec azoture de sodium à 0,02 % et glycérol à 50 % pH 7,3

L'aliquotage n'est pas nécessaire pour le stockage à -20C

*** Les 20ul contiennent 0,1% de BSA.

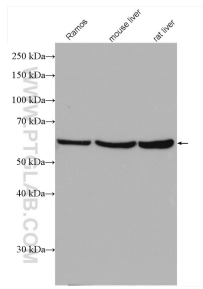
For technical support and original validation data for this product please contact:

T: 1 (888) 4PTGLAB (1-888-478-4522) (toll free in USA), or 1(312) 455-8498 (outside USA)

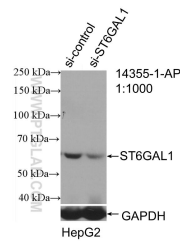
E: proteintech@ptglab.com
W: ptglab.com

This product is exclusively available under Proteintech Group brand and is not available to purchase from any other manufacturer.

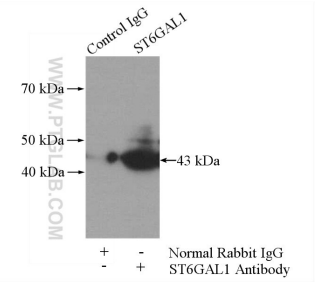
Données de validation sélectionnées



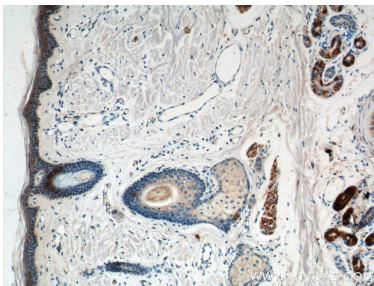
Various lysates were subjected to SDS PAGE followed by western blot with 14355-1-AP (ST6GAL1 antibody) at dilution of 1:1000 incubated at room temperature for 1.5 hours.



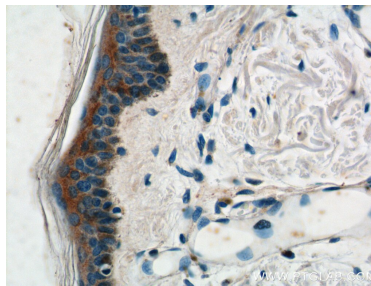
WB result of ST6GAL1 antibody (14355-1-AP; 1:1000; incubated at room temperature for 1.5 hours) with sh-Control and sh-ST6GAL1 transfected HepG2 cells.



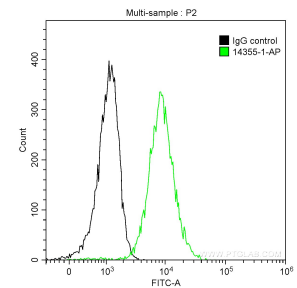
IP Result of anti-ST6GAL1 (IP:14355-1-AP, 4ug; Detection:14355-1-AP 1:600) with Raji cells lysate 2800ug.



Immunohistochemical analysis of paraffin-embedded human skin tissue slide using 14355-1-AP (ST6GAL1 Antibody) at dilution of 1:200 (under 10x lens).



Immunohistochemical analysis of paraffin-embedded human skin tissue slide using 14355-1-AP (ST6GAL1 Antibody) at dilution of 1:200 (under 40x lens).



1×10^6 Raji cells were intracellularly stained with 0.2 ug Anti-Human ST6GAL1 (14355-1-AP) and CoraLite®488-Conjugated AffiniPure Goat Anti-Rabbit IgG(H+L) at dilution 1:1000 (green), and 0.2 ug Control Antibody. Cells were fixed with 90% MeOH.