

À des fins de recherche uniquement

# Anticorps Polyclonal de lapin anti- ERG



Numéro de catalogue: 14356-1-AP

Phare

5 Publications

## Informations de base

Numéro de catalogue:  
14356-1-AP

Taille:  
150ul, Concentration: 400 µg/ml by  
Nanodrop and 267 µg/ml by Bradford  
method using BSA as the standard;

Hôte:  
Lapin

Isotype:  
IgG

Immunogen Catalog Number:  
AG5708

Numéro d'acquisition GenBank:  
BC040168

Identification du gène (NCBI):  
2078

Nom complet:  
v-ets erythroblastosis virus E26  
oncogene homolog (avian)

MW calculé  
55 kDa

MW observés:  
55 kDa

Méthode de purification:  
Purification par affinité contre  
l'antigène

Dilutions recommandées:  
WB 1:500-1:1000  
IP 0.5-4.0 ug for IP and 1:500-1:1000  
for WB  
IHC 1:600-1:2400  
IF 1:50-1:500

## Applications

Applications testées:  
FC, IF, IHC, IP, WB, ELISA

Demandes citées:  
IF, IHC, WB

Spécificité de l'espèce:  
Humain, rat, souris

Espèces citées:  
Humain, souris

**Remarque-IHC: il est suggéré de démasquer  
l'antigène avec un tampon de TE buffer pH  
9.0; (\*) A défaut, 'le démasquage de  
l'antigène peut être 'effectué avec un  
tampon citrate pH 6,0.**

Contrôles positifs:

WB : cellules MCF-7, cellules HEK-293

IP : cellules MCF-7,

IHC : tissu de cancer de la prostate humain, tissu  
cérébral de souris, tissu d'amygdalite humain

IF : cellules MCF-7,

## Informations générales

ERG (ETS-related gene) is a member of the ETS family of transcription factors, which are downstream effectors of mitogenic signaling transduction pathway. ERG is a key regulator of cell proliferation, differentiation, angiogenesis, inflammation, and apoptosis. ERG is involved in chromosomal translocations, resulting in different fusion gene products, such as TMPSSR2-ERG and NDRG1-ERG in prostate cancer, EWS-ERG in Ewing's sarcoma and FUS-ERG in acute myeloid leukemia.

## Publications notables

Autrice	Pubmed ID	Journal	Application
Qiong Wang	36088396	Cell Biosci	WB
Yongbao Wei	32489464	J Cancer	WB
Feng Yao	35279683	Cell Death Discov	WB,IF

## Stockage

Stockage:

Stocker à -20°C. Stable pendant un an après l'expédition.

Tampon de stockage:

PBS avec azoture de sodium à 0,02 % et glycérol à 50 % pH 7,3

L'aliquotage n'est pas nécessaire pour le stockage à -20C

\*\*\* Les 20ul contiennent 0,1% de BSA.

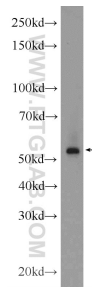
For technical support and original validation data for this product please contact:

T: 1 (888) 4PTGLAB (1-888-478-4522) (toll free  
in USA), or 1(312) 455-8498 (outside USA)

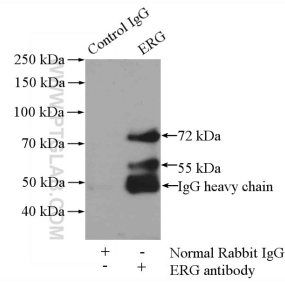
E: proteintech@ptglab.com  
W: ptglab.com

This product is exclusively available under Proteintech  
Group brand and is not available to purchase from any  
other manufacturer.

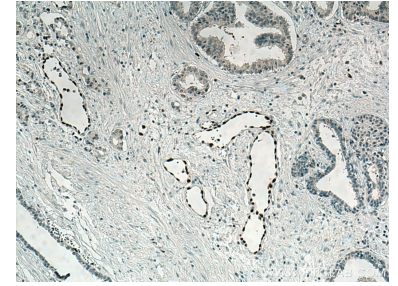
## Données de validation sélectionnées



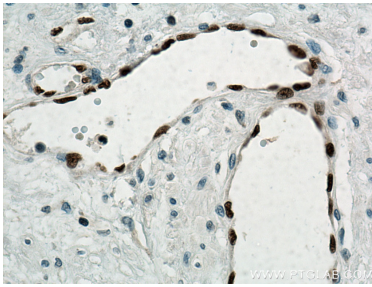
MCF-7 cells were subjected to SDS PAGE followed by western blot with 14356-1-AP (ERG Antibody) at dilution of 1:600 incubated at room temperature for 1.5 hours.



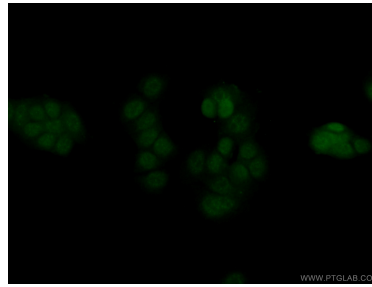
IP Result of anti-ERG (IP:14356-1-AP, 4ug; Detection:14356-1-AP 1:500) with MCF-7 cells lysate 800ug.



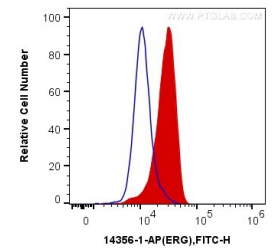
Immunohistochemical analysis of paraffin-embedded human prostate cancer tissue slide using 14356-1-AP (ERG antibody) at dilution of 1:1200 (under 10x lens). Heat mediated antigen retrieval with Tris-EDTA buffer (pH 9.0).



Immunohistochemical analysis of paraffin-embedded human prostate cancer tissue slide using 14356-1-AP (ERG antibody) at dilution of 1:1200 (under 40x lens). Heat mediated antigen retrieval with Tris-EDTA buffer (pH 9.0).



Immunofluorescent analysis of (4% PFA) fixed MCF-7 cells using 14356-1-AP (ERG antibody) at dilution of 1:50 and Alexa Fluor 488-Conjugated AffiniPure Goat Anti-Rabbit IgG(H+L).



$1 \times 10^6$  MCF-7 cells were intracellularly stained with 0.4 ug Anti-Human ERG (14356-1-AP) and CoraLite®488-Conjugated AffiniPure Goat Anti-Rabbit IgG(H+L) at dilution 1:1000 (red), or 0.4 ug Control Antibody. Cells were fixed and permeabilized with Transcription Factor Staining Buffer Kit (PF00011).