

À des fins de recherche uniquement

Anticorps Polyclonal de lapin anti-MTMR2



Numéro de catalogue: 14372-1-AP

Phare

Informations de base

Numéro de catalogue:
14372-1-AP

Taille:
150ul, Concentration: 400 µg/ml by
Nanodrop and 207 µg/ml by Bradford
method using BSA as the standard;

Hôte:
Lapin

Isotype:
IgG

Immunogen Catalog Number:
AG5745

Numéro d'acquisition GenBank:
BC052990

Identification du gène (NCBI):
8898

Nom complet:
myotubularin related protein 2

MW calculé
73 kDa

MW observés:
66-73 kDa

Méthode de purification:
Purification par affinité contre
l'antigène

Dilutions recommandées:
WB 1:500-1:2000
IP 0.5-4.0 ug for IP and 1:200-1:1000
for WB
IHC 1:100-1:400

Applications

Applications testées:
IHC, IP, WB, ELISA

Spécificité de l'espèce:
Humain, rat, souris

**Remarque-IHC: il est suggéré de démasquer
l'antigène avec un tampon de TE buffer pH
9.0; (*) À défaut, le démasquage de
l'antigène peut être effectué avec un
tampon citrate pH 6.0.**

Contrôles positifs:

WB : cellules HeLa, cellules NIH/3T3, tissu de cerveau
humain

IP : tissu de cerveau de souris,

IHC : tissu de cancer de l'endomètre humain, tissu de
cerveau humain

Informations générales

MTMR2(myotubularin-related protein 2) is also named as KIAA1073 and belongs to the non-receptor class myotubularin subfamily, which is characterized by the presence of a phosphatase domain. It may regulate vesicular trafficking in Schwann cells (PMID:17880751) and its reversible phosphorylation represents a critical mechanism for regulating the subcellular localization of MTMR2(PMID:21372139). MTMR2 is a 73 kDa protein in its monomeric form and exist as a dimer within cells and the protein re-localizes to membranes in hypo-osmotic settings(PMID:16399794). Defects in MTMR2 are the cause of Charcot-Marie-Tooth disease type 4B1 (CMT4B1). MTMR2 has two isoforms with the molecular mass of 73 and 66 kDa.

Stockage

Stockage:

Stocker à -20°C. Stable pendant un an après l'expédition.

Tampon de stockage:

PBS avec azoture de sodium à 0,02 % et glycérol à 50 % pH 7,3

L'aliquotage n'est pas nécessaire pour le stockage à -20C

*** Les 20ul contiennent 0,1% de BSA.

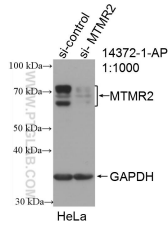
For technical support and original validation data for this product please contact:

T: 1 (888) 4PTGLAB (1-888-478-4522) (toll free
in USA), or 1(312) 455-8498 (outside USA)

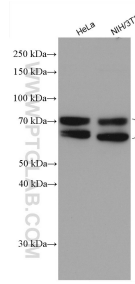
E: proteintech@ptglab.com
W: ptglab.com

This product is exclusively available under Proteintech Group brand and is not available to purchase from any other manufacturer.

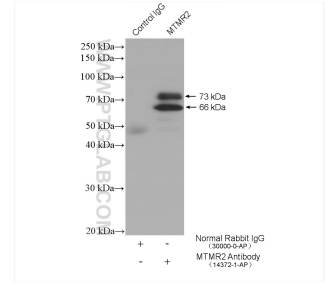
Données de validation sélectionnées



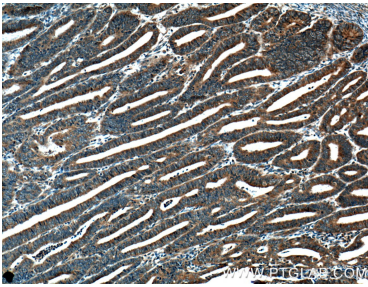
WB result of MTMR2 antibody (14372-1-AP; 1:1000; incubated at room temperature for 1.5 hours) with sh-Control and sh-MTMR2 transfected HeLa cells.



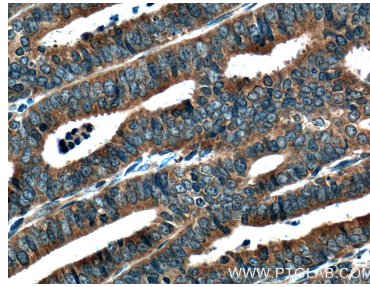
Various lysates were subjected to SDS PAGE followed by western blot with 14372-1-AP (MTMR2 antibody) at dilution of 1:1000 incubated at room temperature for 1.5 hours.



IP result of anti-MTMR2 (IP:14372-1-AP, 4ug; Detection:14372-1-AP 1:300) with mouse cerebellum tissue lysate 4000 ug.



Immunohistochemical analysis of paraffin-embedded human endometrial cancer tissue slide using 14372-1-AP (MTMR2 Antibody) at dilution of 1:200 (under 10x lens). Heat mediated antigen retrieval with Tris-EDTA buffer (pH 9.0).



Immunohistochemical analysis of paraffin-embedded human endometrial cancer tissue slide using 14372-1-AP (MTMR2 Antibody) at dilution of 1:200 (under 40x lens). Heat mediated antigen retrieval with Tris-EDTA buffer (pH 9.0).