

À des fins de recherche uniquement

Anticorps Polyclonal de lapin anti-Fascin



Numéro de catalogue: 14384-1-AP

Phare

6 Publications

Informations de base

Numéro de catalogue:

14384-1-AP

Taille:

150ul, Concentration: 400 µg/ml by Nanodrop and 300 µg/ml by Bradford method using BSA as the standard;

Hôte:

Lapin

Isotype:

IgG

Immunogen Catalog Number:

AG5816

Numéro d'acquisition GenBank:

BC000521

Identification du gène (NCBI):

6624

Nom complet:

fascin homolog 1, actin-bundling protein (Strongylocentrotus purpuratus)

MW calculé

55 kDa

MW observés:

50-55 kDa

Méthode de purification:

Purification par affinité contre l'antigène

Dilutions recommandées:

WB 1:2000-1:8000

IHC 1:50-1:500

IF 1:50-1:500

Applications

Applications testées:

FC, IF, IHC, WB, ELISA

Demandes citées:

IHC, WB

Spécificité de l'espèce:

Humain, souris

Espèces citées:

Humain, souris

Remarque-IHC: il est suggéré de démasquer l'antigène avec un tampon de TE buffer pH 9,0; (*) A défaut, 'le démasquage de l'antigène peut être effectué avec un tampon citrate pH 6,0.

Contrôles positifs:

WB : cellules HeLa, cellules K-562, cellules NIH/3T3, cellules SH-SY5Y, tissu de thymus de souris

IHC : tissu d'amygdalite humaine, tissu de cancer du foie humain

IF : tissu cérébral de souris,

Informations générales

Fascin is a highly conserved and ubiquitous actin cross-linking protein that has a major function in cell motility and adhesion. Fascin localizes to a number of highly dynamic cellular structures that require strong mechanical support which include stress fibers and cellular protrusions such as microvilli, microspikes and lamellipodia. Fascin is up-regulated in many human carcinomas. It's a marker for Reed-Sternberg cells in Hodgkin's disease; it is also a highly selective marker for dendritic cells of lymphoid tissues.

Publications notables

Autrice	Pubmed ID	Journal	Application
Lihua Guo	25433493	J Exp Clin Cancer Res	WB
Peiyu Gao	32554050	Immunol Lett	WB
Ajab Khan	31465800	Int J Biol Macromol	WB

Stockage

Stockage:

Stocker à -20°C. Stable pendant un an après l'expédition.

Tampon de stockage:

PBS avec azoture de sodium à 0,02 % et glycérol à 50 % pH 7,3

L'aliquotage n'est pas nécessaire pour le stockage à -20C

*** Les 20ul contiennent 0,1% de BSA.

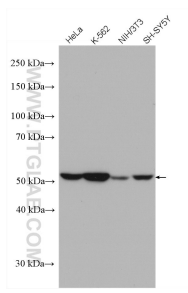
For technical support and original validation data for this product please contact:

T: 1 (888) 4PTGLAB (1-888-478-4522) (toll free in USA), or 1(312) 455-8498 (outside USA)

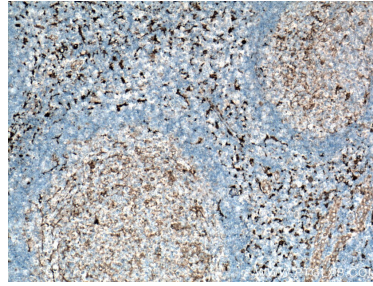
E: proteintech@ptglab.com
W: ptglab.com

This product is exclusively available under Proteintech Group brand and is not available to purchase from any other manufacturer.

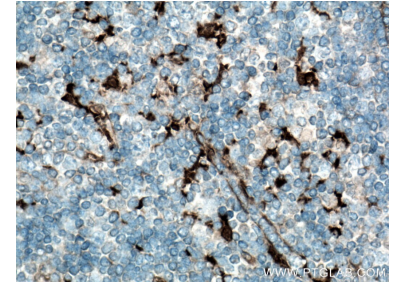
Données de validation sélectionnées



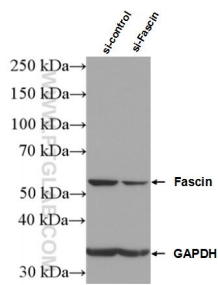
Various lysates were subjected to SDS PAGE followed by western blot with 14384-1-AP (Fascin antibody) at dilution of 1:8000 incubated at room temperature for 1.5 hours.



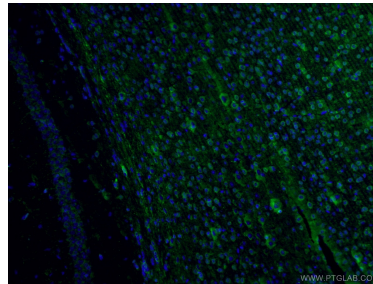
Immunohistochemical analysis of paraffin-embedded human tonsillitis tissue slide using 14384-1-AP (Fascin antibody) at dilution of 1:200 (under 10x lens. Heat mediated antigen retrieval with Tris-EDTA buffer (pH 9.0).



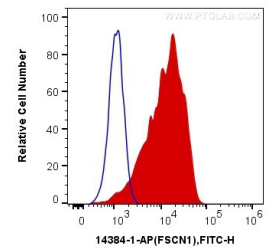
Immunohistochemical analysis of paraffin-embedded human tonsillitis tissue slide using 14384-1-AP (Fascin antibody) at dilution of 1:200 (under 40x lens. Heat mediated antigen retrieval with Tris-EDTA buffer (pH 9.0).



WB result of Fascin antibody (14384-1-AP; 1:20000; incubated at room temperature for 1.5 hours) with sh-Control and sh-Fascin transfected HeLa cells.



Immunofluorescent analysis of (4% PFA) fixed mouse brain tissue using 14384-1-AP (Fascin antibody) at dilution of 1:50 and Alexa Fluor 488-Conjugated AffiniPure Goat Anti-Rabbit IgG(H+L).



1×10^6 SH-SY5Y cells were intracellularly stained with 0.2 ug Anti-Human Fascin (14384-1-AP) and CoraLite@488-Conjugated AffiniPure Goat Anti-Rabbit IgG(H+L) at dilution 1:1000 (red), or 0.2 ug Control Antibody. Cells were fixed with 4% PFA and permeabilized with 0.1% TritonX-100.