

À des fins de recherche uniquement

Anticorps Polyclonal de lapin anti-MAG



Numéro de catalogue: 14386-1-AP

12 Publications

Informations de base

Numéro de catalogue: 14386-1-AP	Numéro d'acquisition GenBank: BC053347	Méthode de purification: Purification par affinité contre l'antigène
Taille: 150ul, Concentration: 400 µg/ml by Nanodrop and 400 µg/ml by Bradford method using BSA as the standard;	Identification du gène (NCBI): 4099	Dilutions recommandées: WB 1:1000-1:3000 IHC 1:50-1:500 IF 1:50-1:500
Hôte: Lapin	Nom complet: myelin associated glycoprotein	
Isotype: IgG	MW calculé 69 kDa	
Immunogen Catalog Number: AG5845	MW observés: 100 kDa	

Applications

Applications testées: IF, IHC, WB, ELISA	Contrôles positifs: WB : tissu de moelle épinière de souris, tissu cérébral de rat, tissu cérébral de souris IHC : tissu cérébral de souris, IF : tissu cérébral de souris,
Demandes citées: IF, WB	
Spécificité de l'espèce: Humain, rat, souris	
Espèces citées: Humain, rat, souris	
Remarque-IHC: il est suggéré de démasquer l'antigène avec un tampon de TE buffer pH 9,0; (*) A défaut, 'le démasquage de l'antigène peut être 'effectué avec un tampon citrate pH 6,0.	

Informations générales

MAG (myelin associated glycoprotein) is a 100-kDa transmembrane glycoprotein that is a member of the SIGLEC family of proteins. MAG is localized in periaxonal Schwann cell and oligodendroglial membranes of myelin sheaths where it functions in glia-axon interactions (PMID: 17241126). It is a functional ligand for the Nogo-66 receptor (PMID: 12089450). MAG is a cell adhesion molecule for postnatal neural development and is thought to be involved in the process of myelination.

Publications notables

Autrice	Pubmed ID	Journal	Application
Jie Cao	34704235	Neurosci Bull	IF
Yao Wang	36302461	Mol Cell Neurosci	IF, WB
Tuan Cheng Feng	35287730	Acta Neuropathol Commun	WB

Stockage

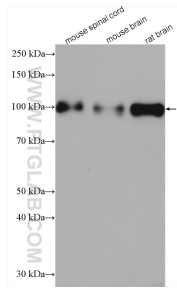
Stockage:
Stocker à -20°C. Stable pendant un an après l'expédition.
Tampon de stockage:
PBS avec azoture de sodium à 0,02 % et glycérol à 50 % pH 7,3
L'aliquotage n'est pas nécessaire pour le stockage à -20C

*** Les 20ul contiennent 0,1% de BSA.

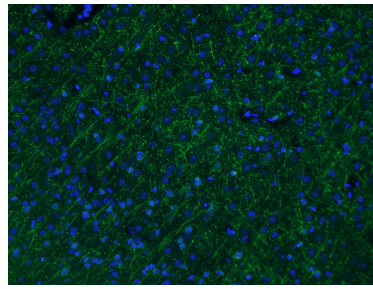
For technical support and original validation data for this product please contact:
T: 1 (888) 4PTGLAB (1-888-478-4522) (toll free in USA), or 1(312) 455-8498 (outside USA)
E: proteintech@ptglab.com
W: ptglab.com

This product is exclusively available under Proteintech Group brand and is not available to purchase from any other manufacturer.

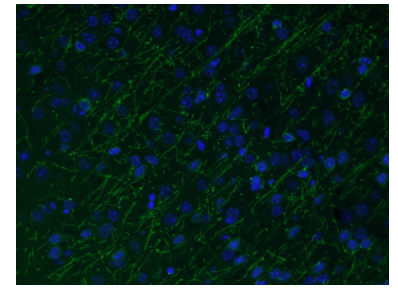
Données de validation sélectionnées



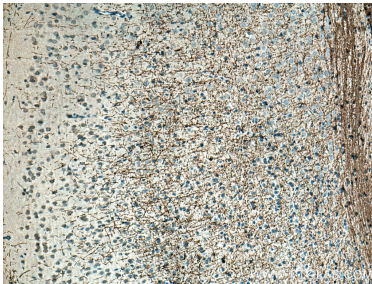
Various lysates were subjected to SDS PAGE followed by western blot with 14386-1-AP (MAG antibody) at dilution of 1:2500 incubated at room temperature for 1.5 hours.



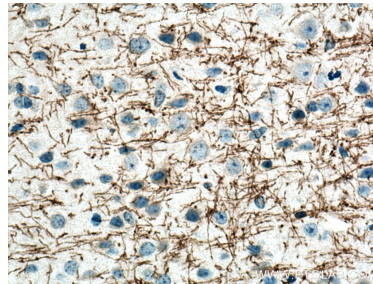
Immunofluorescent analysis of (4% PFA) fixed mouse brain tissue using 14386-1-AP (MAG antibody) at dilution of 1:50 and Alexa Fluor 488-Conjugated AffiniPure Goat Anti-Rabbit IgG(H+L).



Immunofluorescent analysis of (4% PFA) fixed mouse brain tissue using 14386-1-AP (MAG antibody) at dilution of 1:50 and Alexa Fluor 488-Conjugated AffiniPure Goat Anti-Rabbit IgG(H+L).



Immunohistochemical analysis of paraffin-embedded mouse brain tissue slide using 14386-1-AP (MAG antibody) at dilution of 1:200 (under 10x lens). Heat mediated antigen retrieval with Tris-EDTA buffer (pH 9.0).



Immunohistochemical analysis of paraffin-embedded mouse brain tissue slide using 14386-1-AP (MAG antibody) at dilution of 1:200 (under 40x lens). Heat mediated antigen retrieval with Tris-EDTA buffer (pH 9.0).