

À des fins de recherche uniquement

Anticorps Polyclonal de lapin anti-Casein Kinase 1 Delta



Numéro de catalogue: 14388-1-AP

Phare

9 Publications

Informations de base

Numéro de catalogue:
14388-1-AP

Taille:
150ul, Concentration: 350 µg/ml by Nanodrop and 300 µg/ml by Bradford method using BSA as the standard;

Hôte:
Lapin

Isotype:
IgG

Immunogen Catalog Number:
AG5856

Numéro d'acquisition GenBank:
BC003558

Identification du gène (NCBI):
1453

Nom complet:
casein kinase 1, delta

MW calculé
47 kDa

MW observés:
47 kDa

Méthode de purification:
Purification par affinité contre l'antigène

Dilutions recommandées:
WB 1:500-1:3000
IP 0.5-4.0 ug for IP and 1:500-1:2000 for WB
IF 1:20-1:200

Applications

Applications testées:
IF, IP, WB, ELISA

Demandes citées:
IF, IHC, WB

Spécificité de l'espèce:
Humain, rat, souris

Espèces citées:
Humain, souris

Contrôles positifs:

WB : cellules HeLa, cellules HEK-293, cellules K-562

IP : cellules HeLa,

IF : cellules HepG2,

Informations générales

CSNK1D(casein kinase I isoform delta) is also named as HCKID, CKId and belongs to the casein kinase I subfamily. CKI is a ubiquitous enzyme which has been found in the cytosol, associated with membranes, and in the nucleus. It can phosphorylate a large number of cytosolic, membrane-associated, and nuclear proteins(PMID:8454611). CSNK1D is found to be associated generally with granulovacuolar bodies and tau-containing neurofibrillary tangles in AD, DS, PSP, PDC, PPND, and controls, and Pick bodies and ballooned neurons in PiD(PMID:10924763). It has 2 isoforms produced by alternative splicing.

Publications notables

Autrice	Pubmed ID	Journal	Application
Xue Deng	34726688	J Cell Biol	WB
Christine R Keenan	30042678	Front Pharmacol	IHC
Yuting Li	32775325	Front Cell Dev Biol	

Stockage

Stockage:

Stocker à -20°C. Stable pendant un an après l'expédition.

Tampon de stockage:

PBS avec azoture de sodium à 0,02 % et glycérol à 50 % pH 7,3

L'aliquotage n'est pas nécessaire pour le stockage à -20C

*** Les 20ul contiennent 0,1% de BSA.

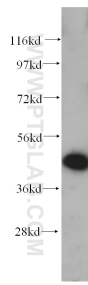
For technical support and original validation data for this product please contact:

T: 1 (888) 4PTGLAB (1-888-478-4522) (toll free in USA), or 1(312) 455-8498 (outside USA)

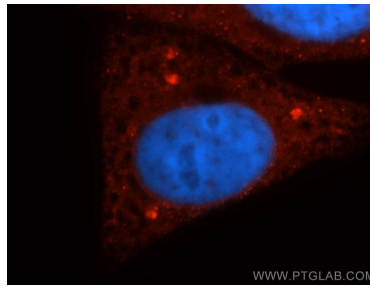
E: proteintech@ptglab.com
W: ptglab.com

This product is exclusively available under Proteintech Group brand and is not available to purchase from any other manufacturer.

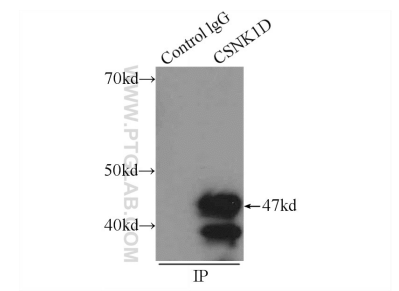
Données de validation sélectionnées



HeLa cells were subjected to SDS PAGE followed by western blot with 14388-1-AP (Casein Kinase 1 delta antibody) at dilution of 1:600 incubated at room temperature for 1.5 hours.



Immunofluorescent analysis of HepG2 cells, using CSNK1D antibody 14388-1-AP at 1:50 dilution and Rhodamine-labeled goat anti-rabbit IgG (red). Blue pseudocolor = DAPI (fluorescent DNA dye).



IP Result of anti-Casein Kinase 1 delta (IP:14388-1-AP, 3ug; Detection:14388-1-AP 1:1000) with HeLa cells lysate 2000ug.