

À des fins de recherche uniquement

# Anticorps Polyclonal de lapin anti-smooth muscle actin



Numéro de catalogue: 14395-1-AP

Phare

798 Publications

## Informations de base

Numéro de catalogue:

14395-1-AP

Taille:

150ul, Concentration: 500 µg/ml by Nanodrop;

Hôte:

Lapin

Isotype:

IgG

Immunogen Catalog Number:

AG5886

Numéro d'acquisition GenBank:

BC017554

Identification du gène (NCBI):

59

Nom complet:

actin, alpha 2, smooth muscle, aorta

MW calculé

377 aa, 42 kDa

MW observés:

43 kDa

Méthode de purification:

Purification par affinité contre l'antigène

Dilutions recommandées:

WB 1:1000-1:8000

IP 0.5-4.0 ug for IP and 1:500-1:2000 for WB

IHC 1:1500-1:6000

IF 1:800-1:3200

## Applications

Applications testées:

FC, IF, IHC, IP, WB, ELISA

Demandes citées:

competitive binding assay, FC, IF, IHC, WB

Spécificité de l'espèce:

Humain, rat, souris

Espèces citées:

canin, Humain, Lapin, poisson-zèbre, porc, rat, singe, souris

**Remarque-IHC: il est suggéré de démasquer l'antigène avec un tampon de TE buffer pH 9,0; (\*) A défaut, 'le démasquage de l'antigène peut être 'effectué avec un tampon citrate pH 6,0.**

Contrôles positifs:

WB : tissu de côlon de souris, cellules A549, cellules HUVEC, tissu cardiaque de rat, tissu cardiaque de souris, tissu de côlon de rat, tissu hépatique de souris, tissu placentaire humain, tissu rénal de souris

IP : tissu hépatique de souris,

IHC : tissu de cancer du foie humain, tissu cardiaque humain, tissu de côlon humain, tissu d'hystéromyome humain, tissu stroma tumoral

IF : cellules C2C12, tissu cardiaque de souris, tissu d'intestin grêle de souris

## Informations générales

ACTA2 (also known as  $\alpha$ -smooth muscle actin or  $\alpha$ -SMA) belongs to the actin family. Actins are highly conserved proteins that are involved in various types of cell motility and are ubiquitously expressed in all eukaryotic cells. ACTA2 is primarily expressed in vascular smooth muscle and anti-ACTA2 is commonly used to marker smooth muscle cells. This antibody may cross-react with other isoforms of actins.

## Publications notables

Autrice	Pubmed ID	Journal	Application
Mengru Xie	32999278	Int J Oral Sci	WB,IF
Aipeng Deng	33321619	Mater Sci Eng C Mater Biol Appl	IF
Hui-Fang Wang	28970011	Eur J Pharmacol	WB,IF

## Stockage

Stockage:

Stocker à -20°C. Stable pendant un an après l'expédition.

Tampon de stockage:

PBS avec azoture de sodium à 0,02 % et glycérol à 50 % pH 7,3

L'aliquotage n'est pas nécessaire pour le stockage à -20C

\*\*\* Les 20ul contiennent 0,1% de BSA.

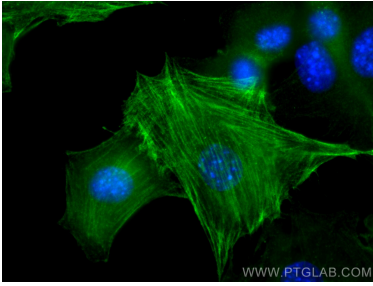
For technical support and original validation data for this product please contact:

T: 1 (888) 4PTGLAB (1-888-478-4522) (toll free in USA), or 1(312) 455-8498 (outside USA)

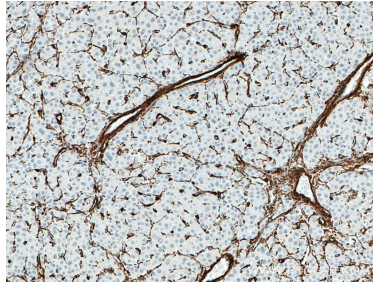
E: proteintech@ptglab.com  
W: ptglab.com

This product is exclusively available under Proteintech Group brand and is not available to purchase from any other manufacturer.

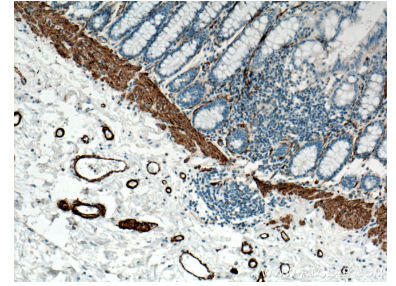
# Données de validation sélectionnées



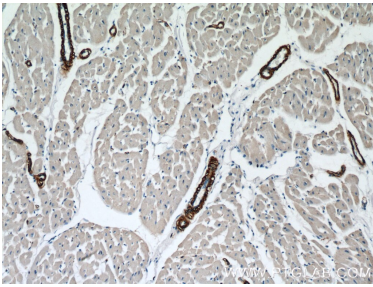
Immunofluorescent analysis of (-20°C Methanol) fixed C2C12 cells using smooth muscle actin antibody (14395-1-AP) at dilution of 1:1600 and CoraLite®488-Conjugated AffiniPure Goat Anti-Rabbit IgG(H+L).



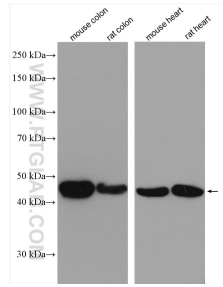
Immunohistochemical analysis of paraffin-embedded human liver cancer tissue slide using 14395-1-AP (ACTA2/smooth muscle actin antibody) at dilution of 1:3000 (under 10x lens). Heat mediated antigen retrieval with Tris-EDTA buffer (pH 9.0).



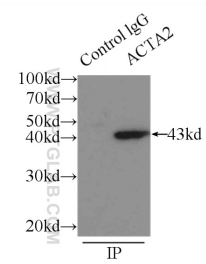
Immunohistochemical analysis of paraffin-embedded human colon tissue slide using 14395-1-AP (ACTA2/smooth muscle actin antibody) at dilution of 1:10000 (under 10x lens). Heat mediated antigen retrieval with Tris-EDTA buffer (pH 9.0).



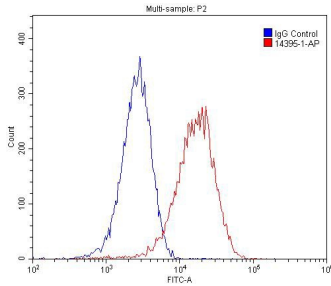
Immunohistochemical analysis of paraffin-embedded human heart tissue slide using 14395-1-AP (ACTA2/smooth muscle actin antibody) at dilution of 1:5000 (under 10x lens).



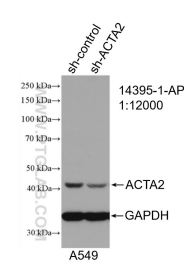
Various lysates were subjected to SDS PAGE followed by western blot with 14395-1-AP (smooth muscle actin antibody) at dilution of 1:6000 incubated at room temperature for 1.5 hours.



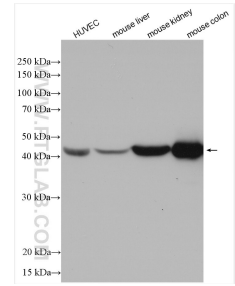
IP Result of anti-ACTA2/smooth muscle actin (IP:14395-1-AP, 3ug; Detection:14395-1-AP 1:1000) with mouse liver tissue lysate 6000ug.



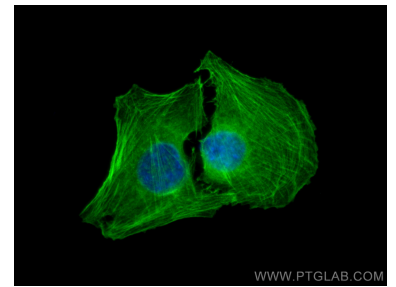
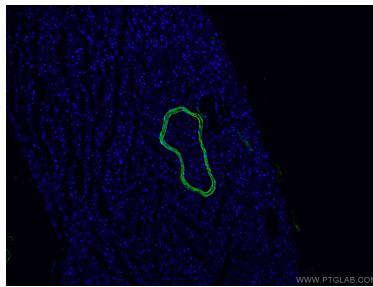
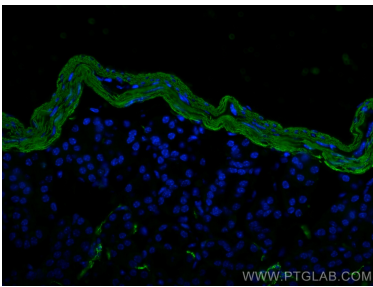
1X10<sup>6</sup> C2C12 cell were stained with 0.2ug ACTA2/smooth muscle actin antibody (14395-1-AP, red) and control antibody (blue). Alexa Fluor 488-conjugated AffiniPure Goat Anti-Rabbit IgG(H+L) with dilution 1:1500. Cells were fixed with 4% PFA and permeabilized with 0.1% Triton X-100.



WB result of smooth muscle actin antibody (14395-1-AP; 1:12000; incubated at room temperature for 1.5 hours) with sh-Control and sh-smooth muscle actin transfected A549 cells.



Various lysates were subjected to SDS PAGE followed by western blot with 14395-1-AP (smooth muscle actin antibody) at dilution of 1:15000 incubated at room temperature for 1.5 hours.



Immunofluorescent analysis of (4% PFA) fixed mouse small intestine tissue using smooth muscle actin antibody (14395-1-AP) at dilution of 1:4000 and CoraLite®488-Conjugated AffiniPure Goat Anti-Rabbit IgG(H+L).

Immunofluorescent analysis of (4% PFA) fixed mouse heart tissue using 14395-1-AP (smooth muscle actin antibody) at dilution of 1:50 and CoraLite®488-Conjugated AffiniPure Goat Anti-Rabbit IgG(H+L).

Immunofluorescent analysis of (-20°C Methanol) fixed C2C12 cells using smooth muscle actin antibody (14395-1-AP) at dilution of 1:200 and CoraLite®488-Conjugated AffiniPure Goat Anti-Rabbit IgG(H+L).