

À des fins de recherche uniquement

Anticorps Polyclonal de lapin anti-SCP2/SCPx



Numéro de catalogue: 14397-1-AP

Phare

1 Publications

Informations de base

Numéro de catalogue:
14397-1-AP

Taille:
150ul, Concentration: 600 µg/ml by Nanodrop and 267 µg/ml by Bradford method using BSA as the standard;

Hôte:
Lapin

Isotype:
IgG

Immunogen Catalog Number:
AG5895

Numéro d'acquisition GenBank:
BC067108

Identification du gène (NCBI):
6342

Nom complet:
sterol carrier protein 2

MW calculé
59 kDa

MW observés:
44-46 kDa, 58 kDa

Méthode de purification:
Purification par affinité contre l'antigène

Dilutions recommandées:
WB 1:300-1:1500
IF 1:10-1:100

Applications

Applications testées:
IF, WB, ELISA

Demandes citées:
WB

Spécificité de l'espèce:
Humain, rat, souris

Espèces citées:
rat

Contrôles positifs:

WB : cellules A549, cellules BxPC-3, cellules HepG2, cellules NIH/3T3

IF : cellules BxPC-3,

Informations générales

SCP2 (Sterol carrier protein-2), also called nonspecific lipid-transfer protein, is thought to play a major role in intracellular lipid transport and metabolism. Mutations of SCP2 have been associated with diseases involving abnormalities in lipid trafficking, such as Zellweger syndrome. The alternative splicing generates 58 kDa SCPx and 13-15 kDa SCP2 proteins, both of which contain a C-terminal SCP2 domain. In addition to the SCP2 domain, SCPx also contains an amino-terminal thiolase domain. The proteolytic cleavage of SCPx occurred when it was imported into peroxisomes, giving rise to a 44-46 kDa thiolase and a 13-15 kDa SCP2. 14397-1-AP antibody recognizes the intact 58 kDa SCPx protein as well as 44-46 kDa thiolase (PMID: 35996156).

Publications notables

Autrice	Pubmed ID	Journal	Application
Maria J Ferreira	37257275	Redox Biol	WB

Stockage

Stockage:

Stocker à -20°C. Stable pendant un an après l'expédition.

Tampon de stockage:

PBS avec azoture de sodium à 0,02 % et glycérol à 50 % pH 7,3

L'aliquotage n'est pas nécessaire pour le stockage à -20°C

*** Les 20ul contiennent 0,1% de BSA.

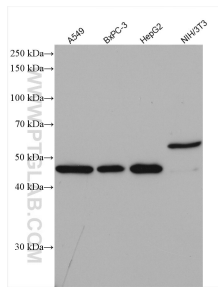
For technical support and original validation data for this product please contact:

T: 1 (888) 4PTGLAB (1-888-478-4522) (toll free in USA), or 1(312) 455-8498 (outside USA)

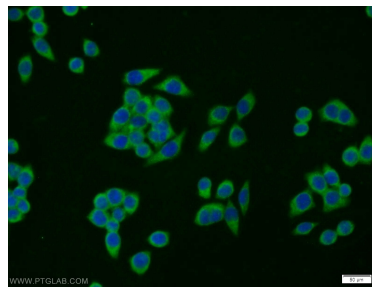
E: proteintech@ptglab.com
W: ptglab.com

This product is exclusively available under Proteintech Group brand and is not available to purchase from any other manufacturer.

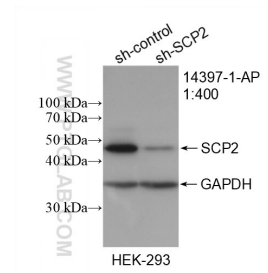
Données de validation sélectionnées



Various lysates were subjected to SDS PAGE followed by western blot with 14397-1-AP (SCP2/SCPx antibody) at dilution of 1:1000 incubated at room temperature for 1.5 hours.



Immunofluorescent analysis of BxPC-3 cells using 14397-1-AP (SCP2 antibody) at dilution of 1:25 and Alexa Fluor 488-conjugated AffiniPure Goat Anti-Rabbit IgG(H+L).



WB result of SCP2/SCPx antibody (14397-1-AP; 1:400; incubated at room temperature for 1.5 hours) with sh-Control and sh-SCP2/SCPx transfected HEK-293 cells.