

À des fins de recherche uniquement

# Anticorps Polyclonal de lapin anti-TAB2



Numéro de catalogue: 14410-1-AP

Phare

13 Publications

## Informations de base

Numéro de catalogue:

14410-1-AP

Taille:

150ul, Concentration: 600 µg/ml by Nanodrop and 300 µg/ml by Bradford method using BSA as the standard;

Hôte:

Lapin

Isotype:

IgG

Immunogen Catalog Number:

AG5742

Numéro d'acquisition GenBank:

BC035910

Identification du gène (NCBI):

23118

Nom complet:

mitogen-activated protein kinase kinase 7 interacting protein 2

MW calculé

76 kDa

MW observés:

77 kDa

Méthode de purification:

Purification par affinité contre l'antigène

Dilutions recommandées:

WB 1:1000-1:4000

IP 0.5-4.0 ug for IP and 1:500-1:1000 for WB

IHC 1:20-1:200

IF 1:20-1:200

## Applications

Applications testées:

FC, IF, IHC, IP, WB, ELISA

Demandes citées:

IHC, WB

Spécificité de l'espèce:

Humain, rat, souris

Espèces citées:

Humain, rat, souris

**Remarque-IHC: il est suggéré de démasquer l'antigène avec un tampon de TE buffer pH 9,0; (\*) A défaut, 'le démasquage de l'antigène peut être effectué avec un tampon citrate pH 6,0.**

Contrôles positifs:

WB : cellules L02, cellules C6, cellules HepG2, cellules Raji, tissu hépatique de rat, tissu hépatique de souris, tissu hépatique humain

IP : cellules HepG2,

IHC : tissu de mélanome malin humain,

IF : cellules HepG2,

## Informations générales

Tab2 has a role in the inflammatory signal transduction pathway and is involved in the reversal of NCoR-dependent and NFkB- or APP-mediated gene repression and androgen antagonist response. Besides, it is identified as a cofactor for ERBB4 to assemble NCoR corepressor complex in response to neuregulin [PMID:16469706]. It also functions as an adaptor that links TAK1 and TRAF6 in response to interleukin-1β (IL-1β) or tumour necrosis factor-α (TNF-α), and thereby mediates TAK1 activation [PMID:11460167].

## Publications notables

Autrice	Pubmed ID	Journal	Application
Chunjie Sheng	30348973	Nat Commun	WB
Yanghao Chen	36420902	Phytother Res	WB
Bo Yang	33985523	J Neuroinflammation	WB

## Stockage

Stockage:

Stocker à -20°C. Stable pendant un an après l'expédition.

Tampon de stockage:

PBS avec azoture de sodium à 0,02 % et glycérol à 50 % pH 7,3

L'aliquotage n'est pas nécessaire pour le stockage à -20C

\*\*\* Les 20ul contiennent 0,1% de BSA.

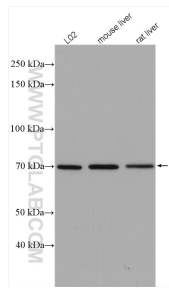
For technical support and original validation data for this product please contact:

T: 1 (888) 4PTGLAB (1-888-478-4522) (toll free in USA), or 1(312) 455-8498 (outside USA)

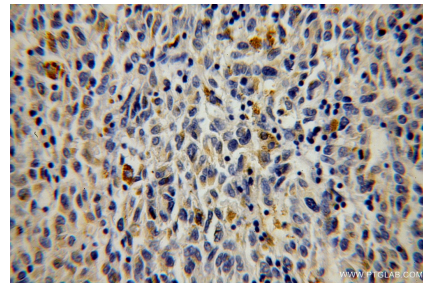
E: proteintech@ptglab.com  
W: ptglab.com

This product is exclusively available under Proteintech Group brand and is not available to purchase from any other manufacturer.

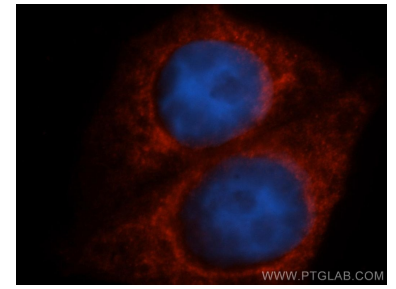
## Données de validation sélectionnées



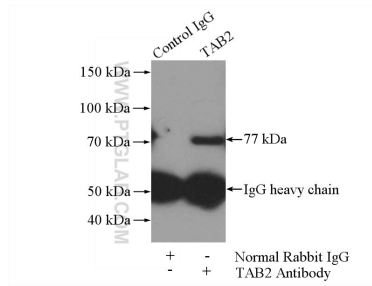
Various lysates were subjected to SDS PAGE followed by western blot with 14410-1-AP (TAB2 antibody) at dilution of 1:2000 incubated at room temperature for 1.5 hours.



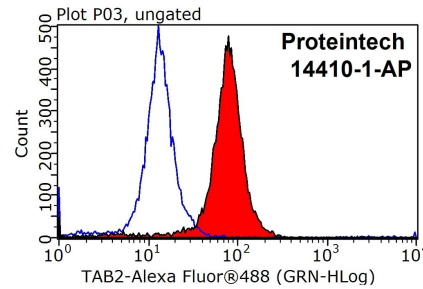
Immunohistochemical analysis of paraffin-embedded human malignant melanoma using 14410-1-AP (TAB2 antibody) at dilution of 1:100 (under 40x lens).



Immunofluorescent analysis of HepG2 cells, using MAP3K7IP2 antibody 14410-1-AP at 1:50 dilution and Rhodamine-labeled goat anti-rabbit IgG (red). Blue pseudocolor = DAPI (fluorescent DNA dye).



IP Result of anti-TAB2 (IP:14410-1-AP, 4 $\mu$ g; Detection:14410-1-AP 1:600) with HepG2 cells lysate 3600 $\mu$ g.



1X10<sup>6</sup> HepG2 cells were stained with 0.2 $\mu$ g TAB2 antibody (14410-1-AP, red) and control antibody (blue). Fixed with 90% MeOH blocked with 3% BSA (30 min). Alexa Fluor 488-conjugated AffiniPure Goat Anti-Rabbit IgG(H+L) with dilution 1:1000.