

À des fins de recherche uniquement

Anticorps Polyclonal de lapin anti-PIBF1



Numéro de catalogue: 14413-1-AP

Phare

6 Publications

Informations de base

Numéro de catalogue:
14413-1-AP

Taille:
150ul, Concentration: 400 µg/ml by Nanodrop and 233 µg/ml by Bradford method using BSA as the standard;

Hôte:
Lapin

Isotype:
IgG

Immunogen Catalog Number:
AG5755

Numéro d'acquisition GenBank:
BC051911

Identification du gène (NCBI):
10464

Nom complet:
progesterone immunomodulatory binding factor 1

MW calculé:
90 kDa

MW observés:
90 kDa

Méthode de purification:
Purification par affinité contre l'antigène

Dilutions recommandées:
WB 1:1000-1:6000
IP 0.5-4.0 ug for IP and 1:500-1:1000 for WB
IF 1:200-1:800

Applications

Applications testées:
IF, IP, WB, ELISA

Demandes citées:
IF, IP, WB

Spécificité de l'espèce:
Humain

Espèces citées:
Humain

Contrôles positifs:

WB : cellules HEK-293, cellules HeLa, cellules K-562, cellules MCF-7

IP : cellules HEK-293,

IF : cellules HEK-293,

Informations générales

PIBF1 is induced by the steroid hormone progesterone and plays a role in the maintenance of pregnancy. PIBF1 regulates multiple facets of the immune system to promote normal pregnancy including cytokine synthesis, natural killer (NK) cell activity, and arachidonic acid metabolism. Low serum levels of this protein have been associated with spontaneous pre-term labor in humans. PIBF1 may promote the proliferation, migration and invasion of glioma.

Publications notables

Autrice	Pubmed ID	Journal	Application
Marine H Laporte	36125182	EMBO J	IF
Pierrick Le Borgne	36070319	PLoS Biol	IF
Dhivya Kumar	34241634	J Cell Biol	WB

Stockage

Stockage:

Stocker à -20°C. Stable pendant un an après l'expédition.

Tampon de stockage:

PBS avec azoture de sodium à 0,02 % et glycérol à 50 % pH 7,3

L'aliquotage n'est pas nécessaire pour le stockage à -20C

*** Les 20ul contiennent 0,1% de BSA.

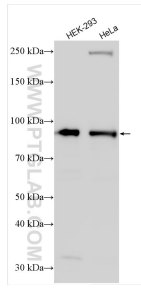
For technical support and original validation data for this product please contact:

T: 1 (888) 4PTGLAB (1-888-478-4522) (toll free in USA), or 1(312) 455-8498 (outside USA)

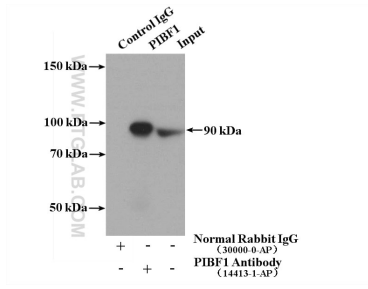
E: proteintech@ptglab.com
W: ptglab.com

This product is exclusively available under Proteintech Group brand and is not available to purchase from any other manufacturer.

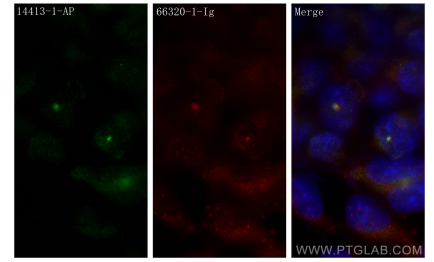
Données de validation sélectionnées



Various lysates were subjected to SDS PAGE followed by western blot with 14413-1-AP (PIBF1 antibody) at dilution of 1:3000 incubated at room temperature for 1.5 hours.



IP Result of anti-PIBF1 (IP:14413-1-AP, 4ug; Detection:14413-1-AP 1:500) with HEK-293 cells lysate 1120ug.



Immunofluorescent analysis of (-20°C Methanol) fixed HEK-293 cells using PIBF1 antibody (14413-1-AP) at dilution of 1:400 and CoraLite®488-Conjugated AffiniPure Goat Anti-Rabbit IgG(H+L), Gamma Tubulin antibody (66320-1-Ig, Clone: 3F9H8, red).