

À des fins de recherche uniquement

# Anticorps Polyclonal de lapin anti-ATP1A1



Numéro de catalogue: 14418-1-AP

Phare

148 Publications

## Informations de base

Numéro de catalogue:

14418-1-AP

Taille:

150ul, Concentration: 1000 µg/ml by

Nanodrop;

Hôte:

Lapin

Isotype:

IgG

Immunogen Catalog Number:

AG5763

Numéro d'acquisition GenBank:

BC050359

Identification du gène (NCBI):

476

Nom complet:

ATPase, Na<sup>+</sup>/K<sup>+</sup> transporting, alpha 1 polypeptide

MW calculé

113 kDa

MW observés:

100-110 kDa

Méthode de purification:

Purification par affinité contre l'antigène

Dilutions recommandées:

WB 1:5000-1:20000

IP 0.5-4.0 µg for IP and 1:200-1:1000 for WB

IHC 1:20-1:400

IF 1:400-1:1600

## Applications

Applications testées:

IF, IHC, IP, WB, ELISA

Demandes citées:

CoIP, IF, IHC, IP, WB

Spécificité de l'espèce:

Humain, rat, souris

Espèces citées:

Humain, porc, poulet, rat, souris

Contrôles positifs:

WB : tissu cardiaque de souris, cellules HEK-293, tissu cardiaque de rat, tissu cérébral de souris incubé à 37 °C

IP : cellules HEK-293, cellules A431

IHC : tissu de cancer du foie humain, tissu de tumeur ovarienne humain

IF : cellules Caco-2, cellules HEK-293

**Remarque-IHC: il est suggéré de démasquer l'antigène avec un tampon de TE buffer pH 9,0; (\*) À défaut, 'le démasquage de l'antigène peut être 'effectué avec un tampon citrate pH 6,0.**

## Informations générales

ATP1A1 is the catalytic component of Na<sup>+</sup>/K<sup>+</sup>-ATPase which is a membrane bound enzyme primarily involved in generation of Na<sup>+</sup> and K<sup>+</sup> gradients across plasma membranes and in determination of cytoplasmic Na<sup>+</sup> levels. ATP1A1 is a ubiquitously expressed membrane protein and often used as the marker or internal control for plasma membrane protein. For optimal WB detection of this membrane protein, we recommend to avoid boiling the sample after lysis.

## Publications notables

Autrice	Pubmed ID	Journal	Application
Zhen-Ning Lu	31568987	Biomed Pharmacother	WB
Raphael Berges	30250248	Cell Death Dis	WB
Hideaki Kuge	32963038	J Lipid Res	WB

## Stockage

Stockage:

Stocker à -20°C. Stable pendant un an après l'expédition.

Tampon de stockage:

PBS avec azoture de sodium à 0,02 % et glycérol à 50 % pH 7,3

L'aliquotage n'est pas nécessaire pour le stockage à -20C

**\*\*\* Les 20ul contiennent 0,1% de BSA.**

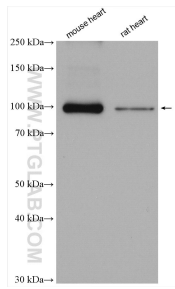
For technical support and original validation data for this product please contact:

T: 1 (888) 4PTGLAB (1-888-478-4522) (toll free in USA), or 1(312) 455-8498 (outside USA)

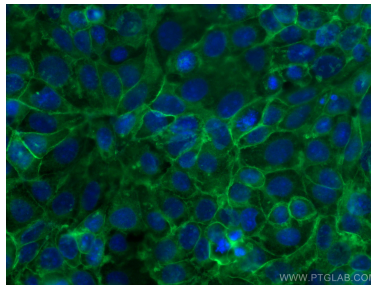
E: [proteintech@ptglab.com](mailto:proteintech@ptglab.com)  
W: [ptglab.com](http://ptglab.com)

**This product is exclusively available under Proteintech Group brand and is not available to purchase from any other manufacturer.**

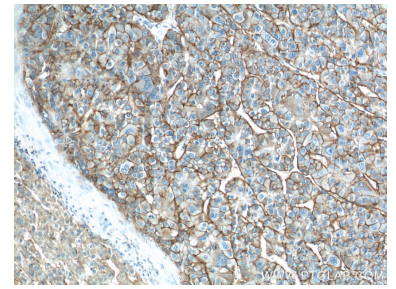
## Données de validation sélectionnées



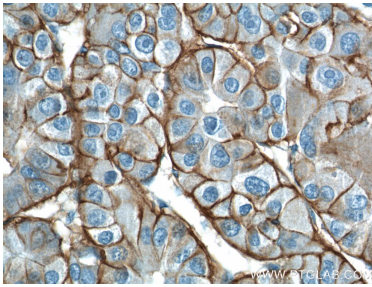
Various lysates were subjected to SDS PAGE followed by western blot with 14418-1-AP (ATP1A1 antibody) at dilution of 1:10000 incubated at room temperature for 1.5 hours.



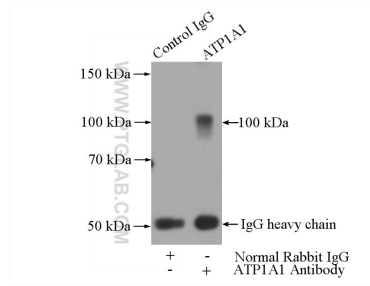
Immunofluorescent analysis of (-20°C Methanol) fixed Caco-2 cells using ATP1A1 antibody (14418-1-AP) at dilution of 1:800 and CoraLite®488-Conjugated AffiniPure Goat Anti-Rabbit IgG(H+L).



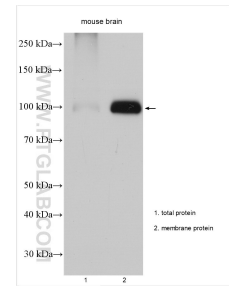
Immunohistochemical analysis of paraffin-embedded human liver cancer tissue slide using 14418-1-AP (ATP1A1 Antibody) at dilution of 1:200 (under 10x lens).



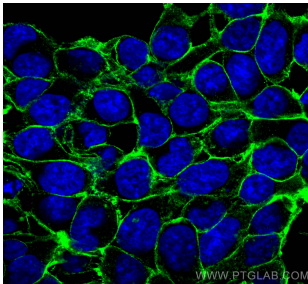
Immunohistochemical analysis of paraffin-embedded human liver cancer tissue slide using 14418-1-AP (ATP1A1 Antibody) at dilution of 1:200 (under 40x lens).



IP Result of anti-ATP1A1 (IP:14418-1-AP, 4ug; Detection:14418-1-AP 1:300) with HEK-293 cells lysate 2800ug.



37°C incubated mouse brain total extract lysate and membrane extract lysate were subjected to SDS PAGE followed by western blot with 14418-1-AP (ATP1A1 antibody) at dilution of 1:100000 incubated at room temperature for 1.5 hours.



Immunofluorescent analysis of (-20°C Methanol) fixed HEK-293 cells using ATP1A1 antibody (14418-1-AP) at dilution of 1:200 and CoraLite®488-Conjugated AffiniPure Goat Anti-Rabbit IgG(H+L).