

À des fins de recherche uniquement

Anticorps Polyclonal de lapin anti-TIMELESS



Numéro de catalogue: 14421-1-AP

Phare

3 Publications

Informations de base

Numéro de catalogue:

14421-1-AP

Taille:

150ul, Concentration: 227 µg/ml by Nanodrop and 227 µg/ml by Bradford method using BSA as the standard;

Hôte:

Lapin

Isotype:

IgG

Immunogen Catalog Number:

AG5767

Numéro d'acquisition GenBank:

BC050557

Identification du gène (NCBI):

8914

Nom complet:

timeless homolog (Drosophila)

MW calculé

139 kDa

MW observés:

140-150 kDa

Méthode de purification:

Purification par affinité contre l'antigène

Dilutions recommandées:

WB 1:1000-1:4000

IHC 1:20-1:200

IF 1:50-1:500

Applications

Applications testées:

IF, IHC, WB, ELISA

Demandes citées:

IHC, WB

Spécificité de l'espèce:

Humain, souris

Espèces citées:

Humain

Remarque-IHC: il est suggéré de démasquer l'antigène avec un tampon de TE buffer pH 9,0; (*) À défaut, 'le démasquage de l'antigène peut être 'effectué avec un tampon citrate pH 6,0.

Contrôles positifs:

WB : cellules HEK-293, cellules A549, cellules HeLa, cellules Jurkat, cellules NIH/3T3, cellules RAW 264.7

IHC : tissu splénique humain, tissu cardiaque humain, tissu cérébral humain, tissu ovarien humain, tissu placentaire humain, tissu rénal humain, tissu testiculaire humain

IF : cellules HeLa,

Informations générales

TIMELESS1 (TIM1) gene encodes protein timeless homolog belonging to timeless family. TIM1 is localized in nucleus and regulated by cell cycle. It expresses high levels in S, G2 and M phases, and low in G0 and G1 phases. TIM1 is involved in the circadian rhythm autoregulatory loop and is a crucial component of the circadian core oscillator, which includes the CRY proteins, CLOCK, NPAS2, etc. It is also involved in cell survival after DNA damage or replication stress and reported to play important role in epithelial cell morphogenesis and formation of branching tubules.

Publications notables

Autrice	Pubmed ID	Journal	Application
Fangfang Li	35715407	Cell Death Dis	WB
Sai-Lan Liu	28583847	Cancer Lett	WB, IHC
Zeyu Wang	33442944	Cell Prolif	WB

Stockage

Stockage:

Stocker à -20°C. Stable pendant un an après l'expédition.

Tampon de stockage:

PBS avec azoture de sodium à 0,02 % et glycérol à 50 % pH 7,3

L'aliquotage n'est pas nécessaire pour le stockage à -20C

*** Les 20ul contiennent 0,1% de BSA.

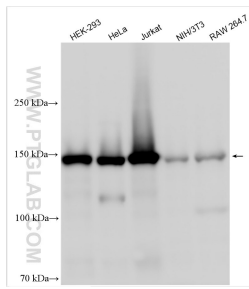
For technical support and original validation data for this product please contact:

T: 1 (888) 4PTGLAB (1-888-478-4522) (toll free in USA), or 1(312) 455-8498 (outside USA)

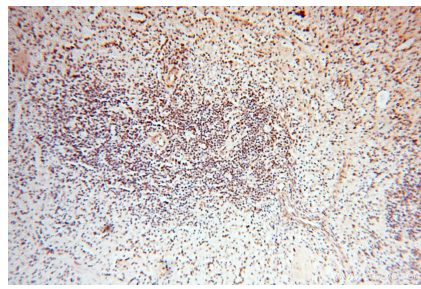
E: proteintech@ptglab.com
W: ptglab.com

This product is exclusively available under Proteintech Group brand and is not available to purchase from any other manufacturer.

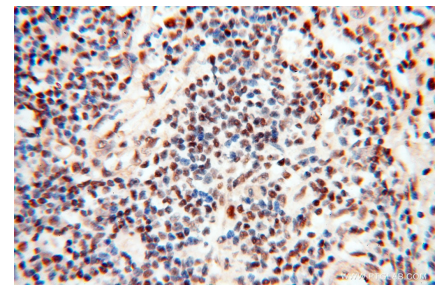
Données de validation sélectionnées



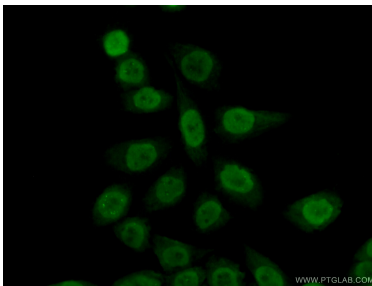
Various lysates were subjected to SDS PAGE followed by western blot with 14421-1-AP (TIMELESS antibody) at dilution of 1:2000 incubated at room temperature for 1.5 hours.



Immunohistochemical analysis of paraffin-embedded human spleen using 14421-1-AP (TIMELESS antibody) at dilution of 1:50 (under 10x lens).



Immunohistochemical analysis of paraffin-embedded human spleen using 14421-1-AP (TIMELESS antibody) at dilution of 1:50 (under 40x lens).



Immunofluorescent analysis of (10% Formaldehyde) fixed HeLa cells using 14421-1-AP (TIMELESS antibody) at dilution of 1:50 and Alexa Fluor 488-conjugated AffiniPure Goat Anti-Rabbit IgG(H+L).