

À des fins de recherche uniquement

Anticorps Polyclonal de lapin anti-RBM10



Numéro de catalogue: 14423-1-AP

Phare

5 Publications

Informations de base

Numéro de catalogue:

14423-1-AP

Taille:

150ul, Concentration: 850 µg/ml by Nanodrop and 420 µg/ml by Bradford method using BSA as the standard;

Hôte:

Lapin

Isotype:

IgG

Immunogen Catalog Number:

AG5788

Numéro d'acquisition GenBank:

BC024153

Identification du gène (NCBI):

8241

Nom complet:

RNA binding motif protein 10

MW calculé

104 kDa

MW observés:

115 kDa

Méthode de purification:

Purification par affinité contre l'antigène

Dilutions recommandées:

WB 1:500-1:2000

IP 0.5-4.0 µg for IP and 1:500-1:1000 for WB

IF 1:50-1:500

Applications

Applications testées:

IF, IP, WB, ELISA

Demandes citées:

IHC, IP, RIP, WB

Spécificité de l'espèce:

Humain, rat, souris

Espèces citées:

Humain

Contrôles positifs:

WB : tissu cérébral humain,

IP : tissu cérébral de souris,

IF : tissu cérébral de souris,

Informations générales

RBM10, also named as RNA-binding protein 10, is a 930 amino acid protein, which is in the extranucleolar nucleoplasm constitutes hundreds of nuclear domains, which dynamically change their structures in a reversible manner. RBM10 may be involved in post-transcriptional processing, most probably in mRNA splicing. RBM10 has some isoforms with MV 130 and 115 kDa (PMID: 25889998 and PMID: 18315527).

Publications notables

Autrice	Pubmed ID	Journal	Application
Ji Hoon Jung	31591476	Oncogene	WB
Shan Cong	36335386	Cancer Cell Int	WB, IHC, RIP
Leslie C Sutherland	28728573	BMC Mol Biol	WB

Stockage

Stockage:

Stocker à -20°C. Stable pendant un an après l'expédition.

Tampon de stockage:

PBS avec azoture de sodium à 0,02 % et glycérol à 50 % pH 7,3

L'aliquotage n'est pas nécessaire pour le stockage à -20C

*** Les 20ul contiennent 0,1% de BSA.

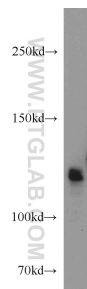
For technical support and original validation data for this product please contact:

T: 1 (888) 4PTGLAB (1-888-478-4522) (toll free in USA), or 1(312) 455-8498 (outside USA)

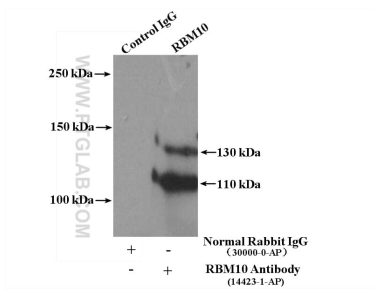
E: proteintech@ptglab.com
W: ptglab.com

This product is exclusively available under Proteintech Group brand and is not available to purchase from any other manufacturer.

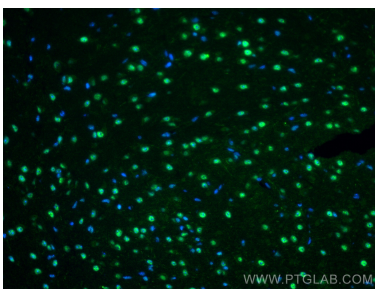
Données de validation sélectionnées



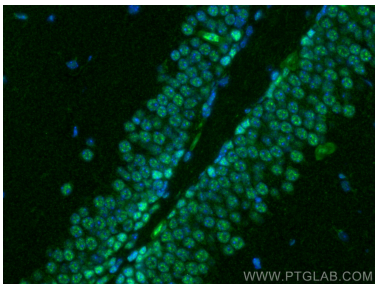
human brain tissue were subjected to SDS PAGE followed by western blot with 14423-1-AP (RBM10 antibody) at dilution of 1:1000 incubated at room temperature for 1.5 hours.



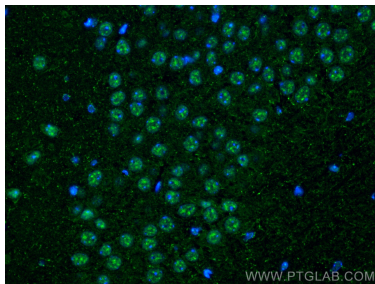
IP Result of anti-RBM10 (IP:14423-1-AP, 4ug; Detection:14423-1-AP 1:800) with mouse brain tissue lysate 4000ug.



Immunofluorescent analysis of (4% PFA) fixed mouse brain tissue using RBM10 antibody (14423-1-AP) at dilution of 1:200 and CoraLite®488-Conjugated AffiniPure Goat Anti-Rabbit IgG(H+L).



Immunofluorescent analysis of (4% PFA) fixed mouse brain tissue using RBM10 antibody (14423-1-AP) at dilution of 1:200 and CoraLite®488-Conjugated AffiniPure Goat Anti-Rabbit IgG(H+L).



Immunofluorescent analysis of (4% PFA) fixed mouse brain tissue using RBM10 antibody (14423-1-AP) at dilution of 1:200 and CoraLite®488-Conjugated AffiniPure Goat Anti-Rabbit IgG(H+L).