

À des fins de recherche uniquement

# Anticorps Polyclonal de lapin anti-KDM5C



Numéro de catalogue: 14426-1-AP

4 Publications

## Informations de base

Numéro de catalogue: 14426-1-AP	Numéro d'acquisition GenBank: BC054499	Méthode de purification: Purification par affinité contre l'antigène
Taille: 150ul, Concentration: 800 µg/ml by Nanodrop;	Identification du gène (NCBI): 8242	Dilutions recommandées: WB 1:1000-1:5000 IF 1:50-1:500
Hôte: Lapin	Nom complet: lysine (K)-specific demethylase 5C	
Isotype: IgG	MW calculé: 176 kDa	
Immunogen Catalog Number: AG5791	MW observés: 171-180 kDa	

## Applications

Applications testées: IF, WB, ELISA	Contrôles positifs: WB : cellules HeLa, cellules Jurkat, cellules MCF-7 IF : cellules HeLa,
Demandes citées: IF, WB	
Spécificité de l'espèce: Humain, rat, souris	
Espèces citées: Humain, souris	

## Informations générales

KDM5C belongs to the ARID protein family that harbors conserved DNA-binding motifs and acts as a histone H3 lysine 4 demethylase, suggesting a potential role in epigenetic regulation during development, cell differentiation (PMID:21575681). KDM5C protein is homologous to three other proteins of the human JARID1 family (JARID1A, JARID1B and JARID1C). This family shares several evolutionarily conserved domains, including the catalytic JmjC domain, JmjN domain, Arid/Bright domain, C5HC2 zinc-finger domain and two plant homeodomains (PHD), a motif that binds methyl-lysine residues (PMID:17320160,17320161).

## Publications notables

Autrice	Pubmed ID	Journal	Application
Shi-Ting Li	32694775	Nat Metab	WB
Wenxia Xu	29989047	Int J Biol Sci	WB
Anna K Kania	34880105	Immunohorizons	WB

## Stockage

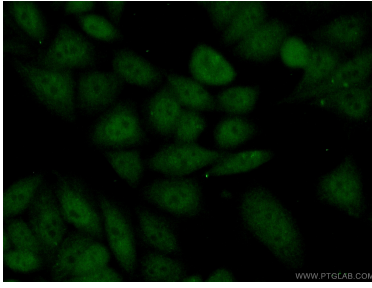
Stockage:  
Stocker à -20°C. Stable pendant un an après l'expédition.  
Tampon de stockage:  
PBS avec azoture de sodium à 0,02 % et glycérol à 50 % pH 7,3  
L'aliquotage n'est pas nécessaire pour le stockage à -20C

\*\*\* Les 20ul contiennent 0,1% de BSA.

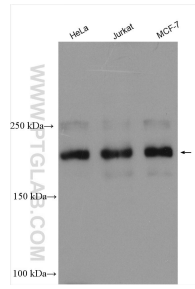
For technical support and original validation data for this product please contact:  
T: 1 (888) 4PTGLAB (1-888-478-4522) (toll free in USA), or 1(312) 455-8498 (outside USA)  
E: proteintech@ptglab.com  
W: ptglab.com

This product is exclusively available under Proteintech Group brand and is not available to purchase from any other manufacturer.

## Données de validation sélectionnées



Immunofluorescent analysis of (10% Formaldehyde) fixed HeLa cells using 14426-1-AP (KDM5C antibody) at dilution of 1:50 and Alexa Fluor 488-conjugated AffiniPure Goat Anti-Rabbit IgG(H+L).



Various lysates were subjected to SDS PAGE followed by western blot with 14426-1-AP (KDM5C antibody) at dilution of 1:2500 incubated at room temperature for 1.5 hours.