

À des fins de recherche uniquement

Anticorps Polyclonal de lapin anti-Apolipoprotein A1



Numéro de catalogue: 14427-1-AP

30 Publications

Informations de base

Numéro de catalogue:

14427-1-AP

Taille:

150ul, Concentration: 700 µg/ml by Nanodrop;

Hôte:

Lapin

Isotype:

IgG

Immunogen Catalog Number:

AG5793

Numéro d'acquisition GenBank:

BC005380

Identification du gène (NCBI):

335

Nom complet:

apolipoprotein A-I

MW calculé

31 kDa

MW observés:

26-30 kDa

Méthode de purification:

Purification par affinité contre l'antigène

Dilutions recommandées:

WB 1:500-1:2000

IP 0.5-4.0 ug for IP and 1:500-1:1000 for WB

IHC 1:50-1:500

IF 1:200-1:800

Applications

Applications testées:

FC, IF, IHC, IP, WB, ELISA

Demandes citées:

IF, IHC, IP, WB

Spécificité de l'espèce:

Humain, souris

Espèces citées:

Humain, souris

Remarque-IHC: il est suggéré de démasquer l'antigène avec un tampon de TE buffer pH 9,0; (*) À défaut, 'le démasquage de l'antigène peut être effectué avec un tampon citrate pH 6,0.

Contrôles positifs:

WB : tissu sanguin humain, cellules PC-13, tissu cérébral humain, tissu d'iléon humain, tissu pulmonaire de souris

IP : tissu pulmonaire de souris,

IHC : tissu de cancer du foie humain, tissu hépatique de souris, tissu hépatique humain, tissu pulmonaire humain

IF : cellules HepG2, tissu hépatique de souris

Informations générales

ApoA1 is a major protein component of high density lipoproteins (HDL) which is associated with reversed cholesterol transport, lipid/cholesterol binding, lecithin/cholesterol acyltransferase (LCAT) activation and specific receptors binding. It is synthesized in the liver and small intestine. Defects of ApoA1 cause low HDL level and systemic non-neuropathic amyloidosis. Serum concentration of ApoA1 is inversely related to the risk of developing atherosclerosis. This antibody was generated against the C-terminal region of human ApoA1.

Publications notables

Autrice	Pubmed ID	Journal	Application
Jiaqi Li	29285103	Exp Ther Med	WB
Te Bu	34815799	Theranostics	WB
Rui Xiang Chen	36203339	Liver Int	WB,IHC,IF

Stockage

Stockage:

Stocker à -20°C. Stable pendant un an après l'expédition.

Tampon de stockage:

PBS avec azoture de sodium à 0,02 % et glycérol à 50 % pH 7,3

L'aliquotage n'est pas nécessaire pour le stockage à -20C

*** Les 20ul contiennent 0,1% de BSA.

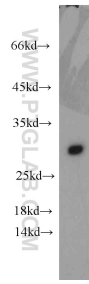
For technical support and original validation data for this product please contact:

T: 1 (888) 4PTGLAB (1-888-478-4522) (toll free in USA), or 1(312) 455-8498 (outside USA)

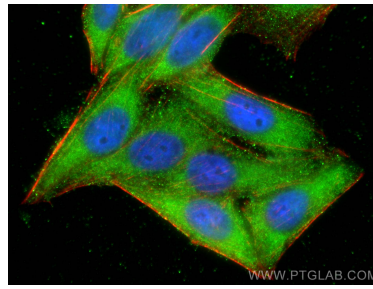
E: proteintech@ptglab.com
W: ptglab.com

This product is exclusively available under Proteintech Group brand and is not available to purchase from any other manufacturer.

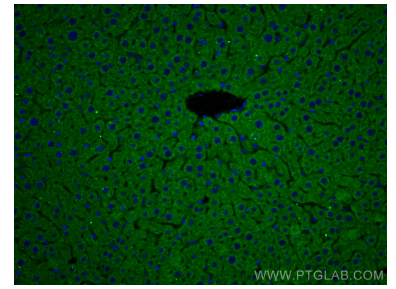
Données de validation sélectionnées



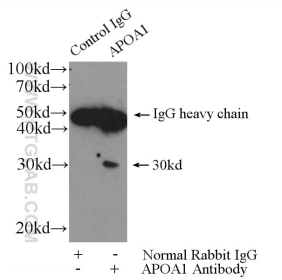
human blood were subjected to SDS PAGE followed by western blot with 14427-1-AP (Apolipoprotein AI antibody) at dilution of 1:1000 incubated at room temperature for 1.5 hours.



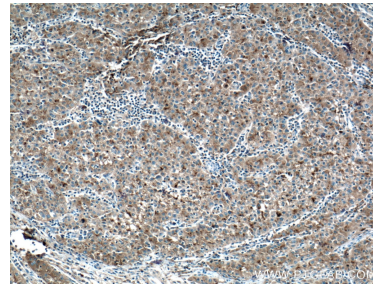
Immunofluorescent analysis of (-20°C Ethanol) fixed HepG2 cells using Apolipoprotein AI antibody (14427-1-AP) at dilution of 1:400 and CoraLite®488-Conjugated AffiniPure Goat Anti-Rabbit IgG(H+L), CL594-Phalloidin (red).



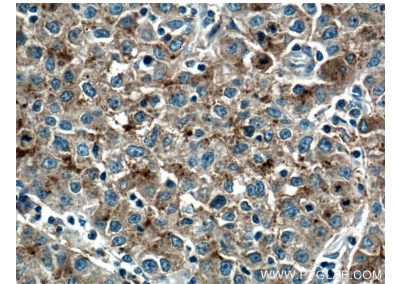
Immunofluorescent analysis of (4% PFA) fixed mouse liver tissue using Apolipoprotein AI antibody (14427-1-AP) at dilution of 1:200 and CoraLite®488-Conjugated AffiniPure Goat Anti-Rabbit IgG(H+L).



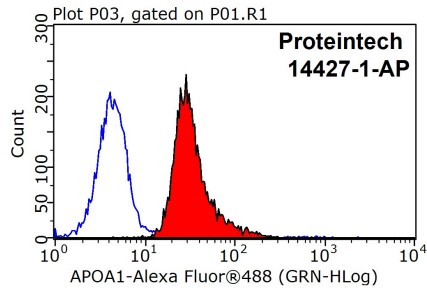
IP Result of anti-Apolipoprotein AI (IP:14427-1-AP, 4ug; Detection:14427-1-AP 1:500) with mouse lung tissue lysate 2800ug.



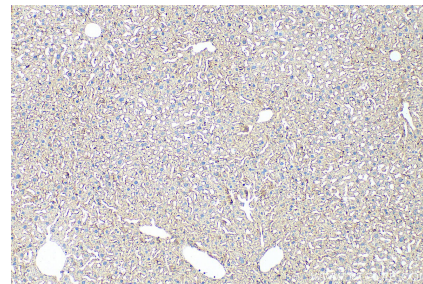
Immunohistochemical analysis of paraffin-embedded human liver cancer tissue slide using 14427-1-AP (Apolipoprotein AI antibody) at dilution of 1:200 (under 10x lens). Heat mediated antigen retrieval with Tris-EDTA buffer (pH 9.0).



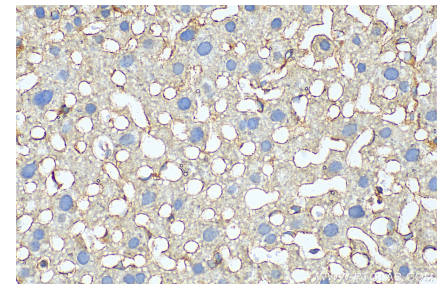
Immunohistochemical analysis of paraffin-embedded human liver cancer tissue slide using 14427-1-AP (Apolipoprotein AI antibody) at dilution of 1:200 (under 40x lens). Heat mediated antigen retrieval with Tris-EDTA buffer (pH 9.0).



1x10⁶ HepG2 cells were stained with 0.2ug Apolipoprotein AI antibody (14427-1-AP, red) and control antibody (blue). Fixed with 90% MeOH blocked with 3% BSA (30 min). Alexa Fluor 488-conjugated AffiniPure Goat Anti-Rabbit IgG(H+L) with dilution 1:1500.



Immunohistochemical analysis of paraffin-embedded mouse liver tissue slide using 14427-1-AP (Apolipoprotein AI antibody) at dilution of 1:200 (under 10x lens). Heat mediated antigen retrieval with Tris-EDTA buffer (pH 9.0).



Immunohistochemical analysis of paraffin-embedded mouse liver tissue slide using 14427-1-AP (Apolipoprotein AI antibody) at dilution of 1:200 (under 40x lens). Heat mediated antigen retrieval with Tris-EDTA buffer (pH 9.0).