

À des fins de recherche uniquement

Anticorps Polyclonal de lapin anti-TFIP11



Numéro de catalogue: 14436-1-AP

Informations de base

Numéro de catalogue: 14436-1-AP	Numéro d'acquisition GenBank: BC033080	Méthode de purification: Purification par affinité contre l'antigène
Taille: 150ul, Concentration: 200 µg/ml by Nanodrop and 160 µg/ml by Bradford method using BSA as the standard;	Identification du gène (NCBI): 24144	Dilutions recommandées: WB 1:500-1:1000 IF 1:50-1:500
Hôte: Lapin	Nom complet: tuftelin interacting protein 11	
Isotype: IgG	MW calculé: 97 kDa	
Immunogen Catalog Number: AG5821	MW observés: 97 kDa	

Applications

Applications testées: IF, WB, ELISA	Contrôles positifs:
Spécificité de l'espèce: Humain, rat, souris	WB : cellules HeLa, cellules K-562, cellules MCF-7, tissu testiculaire de souris
	IF : cellules HeLa,

Informations générales

TFIP11, also named as Tuftelin-interacting protein 11 or Septin and tuftelin-interacting protein 1, is a 837 amino acid protein, which contains one G-patch domain and belongs to the TFP11/STIP family. TFIP11 may localizes in the nucleus and cytoplasm. TFIP11 is involved in pre-mRNA splicing, specifically in spliceosome disassembly during late-stage splicing events. TFIP11 may play a role in the differentiation of ameloblasts and odontoblasts or in the forming of the enamel extracellular matrix.

Stockage

Stockage:
Stocker à -20°C. Stable pendant un an après l'expédition.
Tampon de stockage:
PBS avec azoture de sodium à 0,02 % et glycérol à 50 % pH 7,3
L'aliquotage n'est pas nécessaire pour le stockage à -20C

*** Les 20ul contiennent 0,1% de BSA.

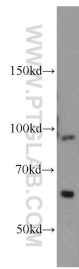
For technical support and original validation data for this product please contact:

T: 1 (888) 4PTGLAB (1-888-478-4522) (toll free in USA), or 1(312) 455-8498 (outside USA)

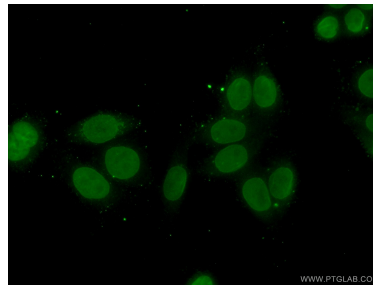
E: proteintech@ptglab.com
W: ptglab.com

This product is exclusively available under Proteintech Group brand and is not available to purchase from any other manufacturer.

Données de validation sélectionnées



HeLa cells were subjected to SDS PAGE followed by western blot with 14436-1-AP (TFIP11 antibody) at dilution of 1:500 incubated at room temperature for 1.5 hours.



Immunofluorescent analysis of (10% Formaldehyde) fixed HeLa cells using 14436-1-AP (TFIP11 antibody) at dilution of 1:50 and Alexa Fluor 488-conjugated AffiniPure Goat Anti-Rabbit IgG(H+L).