

À des fins de recherche uniquement

# Anticorps Polyclonal de lapin anti-CYP17A1



Numéro de catalogue: 14447-1-AP

33 Publications

## Informations de base

<b>Numéro de catalogue:</b> 14447-1-AP	<b>Numéro d'acquisition GenBank:</b> BC062997	<b>Méthode de purification:</b> Purification par affinité contre l'antigène
<b>Taille:</b> 150ul, Concentration: 350 µg/ml by Nanodrop and 287 µg/ml by Bradford method using BSA as the standard;	<b>Identification du gène (NCBI):</b> 1586	<b>Dilutions recommandées:</b> WB 1:500-1:1000 IHC 1:100-1:400 IF 1:20-1:200
<b>Hôte:</b> Lapin	<b>Nom complet:</b> cytochrome P450, family 17, subfamily A, polypeptide 1	
<b>Isotype:</b> IgG	<b>MW calculé:</b> 57 kDa	
<b>Immunogen Catalog Number:</b> AG5899	<b>MW observés:</b> 48-51 kDa	

## Applications

### Applications testées:

IF, IHC, WB, ELISA

### Demandes citées:

IF, IHC, WB

### Spécificité de l'espèce:

Humain, rat, souris

### Espèces citées:

Humain, rat, souris

**Remarque-IHC: il est suggéré de démasquer l'antigène avec un tampon de TE buffer pH 9,0; (\*) A défaut, 'le démasquage de l'antigène peut être effectué avec un tampon citrate pH 6,0.**

### Contrôles positifs:

**WB:** cellules HeLa, cellules A549, cellules HepG2, cellules Jurkat, tissu cérébral de rat, tissu cérébral de souris

**IHC:** tissu de cancer de la prostate humain,

**IF:** cellules HepG2,

## Informations générales

The human cytochrome P450c17 enzyme is encoded by the CYP17A1 gene. It is the qualitative regulator of steroidogenesis in the human adrenals. In its absence, aldosterone is produced in the human adrenal zona glomerulosa. The CYP17A1 gene is expressed in the adrenal cortex and the gonads but not in the placenta (PMID:19403566). Although CYP17A1 has been shown to be a 50-kDa protein, the presence of a lower molecular mass (30 kDa) immunoreactive form in rat Leydig cells was previously shown and it is either a degradation product or a truncated form of the 50 kDa enzyme (PMID:15761033). Defects in CYP17A1 are the cause of adrenal hyperplasia type 5 (AH5) and CYP17A1 is an important target for inhibition in the treatment of prostate cancer (PMID 27505042, PMID 27505042).

## Publications notables

Autrice	Pubmed ID	Journal	Application
Yanyan Zhao	36152347	Biochem Biophys Res Commun	IHC
Yan Peng	33109277	Biol Res	WB
Jun Li	36338128	Front Bioeng Biotechnol	WB,IF

## Stockage

### Stockage:

Stocker à -20°C. Stable pendant un an après l'expédition.

### Tampon de stockage:

PBS avec azoture de sodium à 0,02 % et glycérol à 50 % pH 7,3

L'aliquotage n'est pas nécessaire pour le stockage à -20C

\*\*\* Les 20ul contiennent 0,1% de BSA.

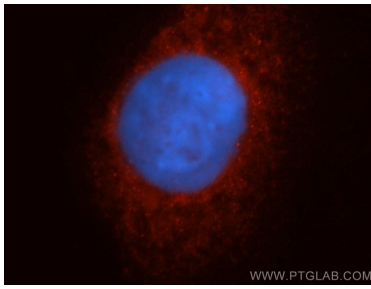
For technical support and original validation data for this product please contact:

T: 1 (888) 4PTGLAB (1-888-478-4522) (toll free in USA), or 1(312) 455-8498 (outside USA)

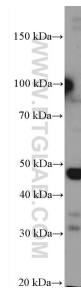
E: proteintech@ptglab.com  
W: ptglab.com

This product is exclusively available under Proteintech Group brand and is not available to purchase from any other manufacturer.

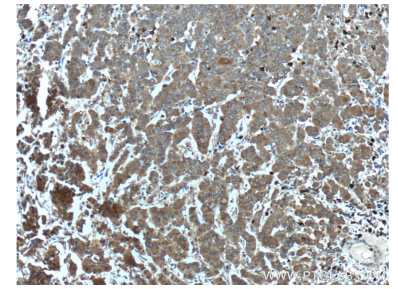
## Données de validation sélectionnées



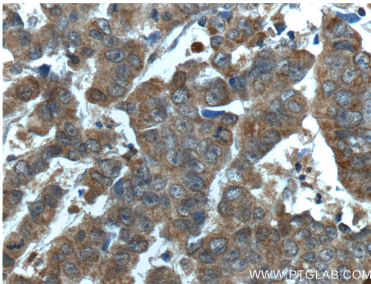
Immunofluorescent analysis of HepG2 cells, using CYP17A1 antibody 14447-1-AP at 1:50 dilution and Rhodamine-labeled goat anti-rabbit IgG (red). Blue pseudocolor = DAPI (fluorescent DNA dye).



HeLa cells were subjected to SDS PAGE followed by western blot with 14447-1-AP (CYP17A1 Antibody) at dilution of 1:600 incubated at room temperature for 1.5 hours.



Immunohistochemical analysis of paraffin-embedded human prostate cancer tissue slide using 14447-1-AP (CYP17A1 Antibody) at dilution of 1:200 (under 10x lens).



Immunohistochemical analysis of paraffin-embedded human prostate cancer tissue slide using 14447-1-AP (CYP17A1 Antibody) at dilution of 1:200 (under 40x lens).