

À des fins de recherche uniquement

Anticorps Polyclonal de lapin anti-TSHR



Numéro de catalogue: 14450-1-AP

Phare

12 Publications

Informations de base

Numéro de catalogue:

14450-1-AP

Taille:

150ul, Concentration: 233 µg/ml by Nanodrop and 233 µg/ml by Bradford method using BSA as the standard;

Hôte:

Lapin

Isotype:

IgG

Immunogen Catalog Number:

AG5957

Numéro d'acquisition GenBank:

BC063613

Identification du gène (NCBI):

7253

Nom complet:

thyroid stimulating hormone receptor

MW calculé

87 kDa

MW observés:

62-70 kDa

Méthode de purification:

Purification par affinité contre l'antigène

Dilutions recommandées:

WB 1:500-1:2000

Applications

Applications testées:

WB, ELISA

Demandes citées:

IF, IHC, WB

Spécificité de l'espèce:

Humain, rat, souris

Espèces citées:

Humain, poisson-zèbre, souris

Contrôles positifs:

WB: cellules HeLa, tissu de thymus de rat, tissu de thymus de souris, tissu ovarien de souris

Informations générales

Thyroid stimulating hormone (also known as thyrotropin or TSH) is a glycoprotein hormone produced by thyrotrophs in the anterior pituitary gland. The TSH receptor (TSHR), mainly expressed on the thyroid epithelial cells, is a G protein-coupled receptor (GPCR) of the seven-transmembrane domain family and plays a central role in controlling thyroid cell metabolism. The gene of TSHR maps to chromosome 14q31.1, and encodes a 764-amino acid protein with a predicted unmodified molecular weight of 86.8 kDa. The apparent molecular weight of glycosylated form is 95-120 kDa. Studies reveal that TSHR is composed of two subunits, A and B, which are produced by cleavage of single-chain TSHR on the cell surface and subsequently connected by disulfide bonds. This rabbit polyclonal antibody raised against N-terminal region (1-253 aa) of human TSHR can detect glycosylated subunit A with an experimentally determined molecular weight of 62-70 kDa under reducing condition. (PMID: 20578897, 17158770, 12593718)

Publications notables

Autrice	Pubmed ID	Journal	Application
Jing Zhang	36142613	Int J Mol Sci	WB
Jianlu Song	30323976	Am J Cancer Res	WB
Luc H J Sondorp	33142750	Cancers (Basel)	IF

Stockage

Stockage:

Stocker à -20°C. Stable pendant un an après l'expédition.

Tampon de stockage:

PBS avec azoture de sodium à 0,02 % et glycérol à 50 % pH 7,3

L'aliquotage n'est pas nécessaire pour le stockage à -20C

*** Les 20ul contiennent 0,1% de BSA.

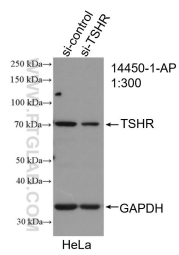
For technical support and original validation data for this product please contact:

T: 1 (888) 4PTGLAB (1-888-478-4522) (toll free in USA), or 1(312) 455-8498 (outside USA)

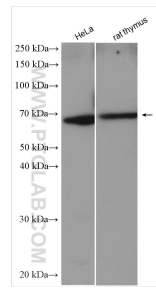
E: proteintech@ptglab.com
W: ptglab.com

This product is exclusively available under Proteintech Group brand and is not available to purchase from any other manufacturer.

Données de validation sélectionnées



WB result of TSHR antibody (14450-1-AP; 1:300; incubated at room temperature for 1.5 hours) with sh-Control and sh-TSHR transfected HeLa cells.



HeLa cells were subjected to SDS PAGE followed by western blot with 14450-1-AP (TSHR antibody) at dilution of 1:1000 incubated at room temperature for 1.5 hours.