

À des fins de recherche uniquement

Anticorps Polyclonal de lapin anti-AMH



Numéro de catalogue: 14461-1-AP

6 Publications

Informations de base

Numéro de catalogue:
14461-1-AP

Taille:
150ul, Concentration: 700 µg/ml by Nanodrop and 433 µg/ml by Bradford method using BSA as the standard;

Hôte:
Lapin

Isotype:
IgG

Immunogen Catalog Number:
AG5670

Numéro d'acquisition GenBank:
BC049194

Identification du gène (NCBI):
268

Nom complet:
anti-Mullerian hormone

MW calculé
59 kDa

Méthode de purification:
Purification par affinité contre l'antigène

Dilutions recommandées:
IHC 1:50-1:500
IF 1:50-1:500

Applications

Applications testées:
IF, IHC, ELISA

Demandes citées:
IHC, WB

Spécificité de l'espèce:
Humain, rat, souris

Espèces citées:
Chèvre, poulet, rat, souris

Remarque-IHC: il est suggéré de démasquer l'antigène avec un tampon de TE buffer pH 9,0; (*) A défaut, le démasquage de l'antigène peut être effectué avec un tampon citrate pH 6,0.

Contrôles positifs:

IHC : tissu ovarien de souris, tissu de tumeur ovarienne humain, tissu ovarien de rat, tissu pancréatique humain, tissu testiculaire humain

IF : tissu ovarien de souris,

Informations générales

Anti-Müllerian hormone (AMH), also called Müllerian-inhibiting substance (MIS), is a hormone that is best known for its production by fetal testes in mammals and as the inhibitor of Müllerian duct development in males. AMH is also expressed in granulosa cells of preantral and small antral follicles in the ovary. More recently, AMH has been studied for its role in ovarian folliculogenesis and as a potential marker of ovarian reserve. The deduced protein sequence of the AMH monomer contains a 25 amino acid secretion specific signal peptide and a monomeric protein of 535 amino acids that, when glycosylated at two glycosylation sites, has a molecular weight of 65-70 kDa. This antibody is specific to AMH.

Publications notables

Autrice	Pubmed ID	Journal	Application
Tong Wu	36278634	J Funct Biomater	IHC
Lei Wang	36525856	Theriogenology	WB
Jiaqiang Xiong	30797753	Exp Cell Res	WB

Stockage

Stockage:

Stocker à -20°C. Stable pendant un an après l'expédition.

Tampon de stockage:

PBS avec azoture de sodium à 0,02 % et glycérol à 50 % pH 7,3

L'aliquoteage n'est pas nécessaire pour le stockage à -20C

*** Les 20ul contiennent 0,1% de BSA.

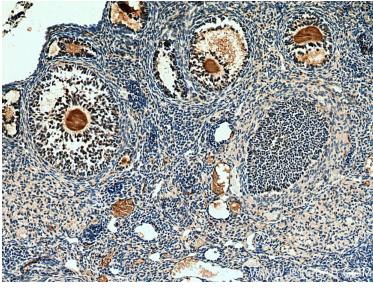
For technical support and original validation data for this product please contact:

T: 1 (888) 4PTGLAB (1-888-478-4522) (toll free in USA), or 1(312) 455-8498 (outside USA)

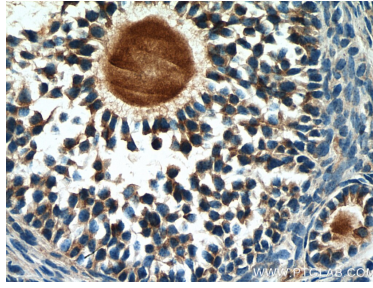
E: proteintech@ptglab.com
W: ptglab.com

This product is exclusively available under Proteintech Group brand and is not available to purchase from any other manufacturer.

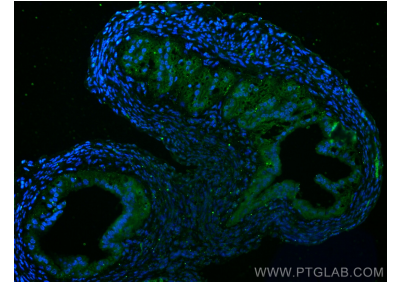
Données de validation sélectionnées



Immunohistochemical analysis of paraffin-embedded mouse ovary tissue slide using 14461-1-AP (AMH antibody) at dilution of 1:200 (under 10x lens). Heat mediated antigen retrieval with Tris-EDTA buffer (pH 9.0).



Immunohistochemical analysis of paraffin-embedded mouse ovary tissue slide using 14461-1-AP (AMH antibody) at dilution of 1:200 (under 40x lens). Heat mediated antigen retrieval with Tris-EDTA buffer (pH 9.0).



Immunofluorescent analysis of (4% PFA) fixed mouse ovary tissue using AMH antibody (14461-1-AP) at dilution of 1:200 and CoraLite®488-Conjugated AffiniPure Goat Anti-Rabbit IgG(H+L).