

À des fins de recherche uniquement

Anticorps Polyclonal de lapin anti-GSTA1



Numéro de catalogue: 14475-1-AP

Phare

13 Publications

Informations de base

Numéro de catalogue:
14475-1-AP

Taille:
150ul, Concentration: 700 µg/ml by Nanodrop and 400 µg/ml by Bradford method using BSA as the standard;

Hôte:
Lapin

Isotype:
IgG

Immunogen Catalog Number:
AG5849

Numéro d'acquisition GenBank:
BC053578

Identification du gène (NCBI):
2938

Nom complet:
glutathione S-transferase alpha 1

MW calculé
26 kDa

MW observés:
26 kDa

Méthode de purification:
Purification par affinité contre l'antigène

Dilutions recommandées:
WB 1:1000-1:6000
IP 0.5-4.0 ug for IP and 1:500-1:1000 for WB
IHC 1:200-1:800
IF 1:50-1:500

Applications

Applications testées:
IF, IHC, IP, WB, ELISA

Demandes citées:
IHC, WB

Spécificité de l'espèce:
Humain, rat, souris

Espèces citées:
rat, souris

Remarque-IHC: il est suggéré de démasquer l'antigène avec un tampon de TE buffer pH 9,0; (*) A défaut, 'le démasquage de l'antigène peut être 'effectué avec un tampon citrate pH 6,0.

Contrôles positifs:

WB : tissu rénal de souris, cellules HepG2, tissu hépatique de rat, tissu hépatique de souris, tissu rénal de rat, tissu rénal humain

IP : tissu hépatique de souris,

IHC : tissu de cancer du poumon humain, tissu de cancer du côlon humain, tissu hépatique humain, tissu rénal humain

IF : cellules HepG2,

Informations générales

GSTA1 encodes one of the GST alpha isozymes, belongs to GST family, which is mainly expressed in the liver. GST can improve the detoxification of organism by enzymatic and non-enzymatic methods, and has anti-mutagenic and anti-tumor effects. Studies have shown that overexpression of GSTA1 can promote the development of lung cancer cells, so the expression level of GSTA1 can be used to predict the degree of malignancy of lung cancer tissues. To some extent, GSTA1 is regarded as a potential lung cancer candidate targets.

Publications notables

Autrice	Pubmed ID	Journal	Application
Eileen Dahlke	36077596	Int J Mol Sci	WB,IHC
Rojanathammanee Lalida L	24285747	J Gerontol A Biol Sci Med Sci	WB
Yoko Ito	33237957	PLoS One	WB

Stockage

Stockage:

Stocker à -20°C. Stable pendant un an après l'expédition.

Tampon de stockage:

PBS avec azoture de sodium à 0,02 % et glycérol à 50 % pH 7,3

L'aliquotage n'est pas nécessaire pour le stockage à -20C

*** Les 20ul contiennent 0,1% de BSA.

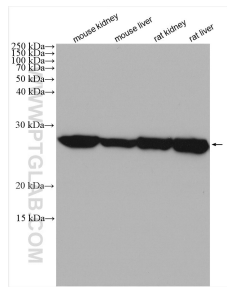
For technical support and original validation data for this product please contact:

T: 1 (888) 4PTGLAB (1-888-478-4522) (toll free in USA), or 1(312) 455-8498 (outside USA)

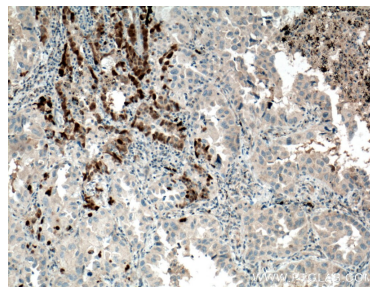
E: proteintech@ptglab.com
W: ptglab.com

This product is exclusively available under Proteintech Group brand and is not available to purchase from any other manufacturer.

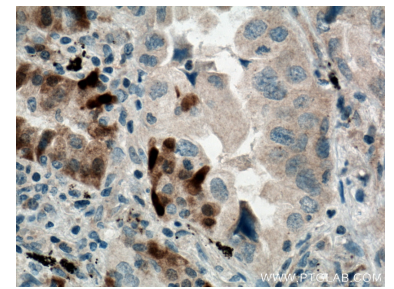
Données de validation sélectionnées



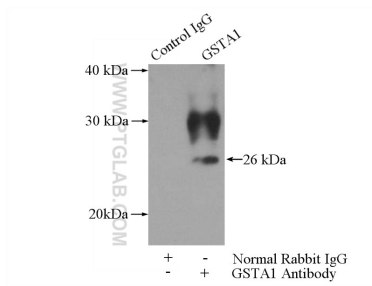
Various lysates were subjected to SDS PAGE followed by western blot with 14475-1-AP (GSTA1 antibody) at dilution of 1:3000 incubated at room temperature for 1.5 hours.



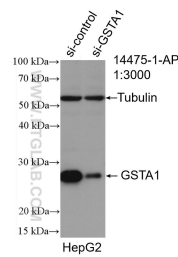
Immunohistochemical analysis of paraffin-embedded human lung cancer tissue slide using 14475-1-AP (GSTA1 antibody) at dilution of 1:400 (under 10x lens. Heat mediated antigen retrieval with Tris-EDTA buffer (pH 9.0).



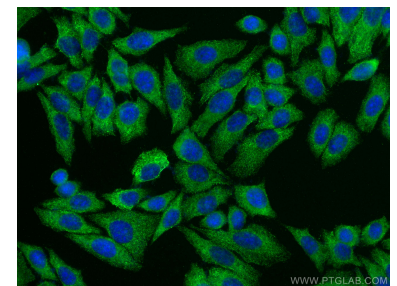
Immunohistochemical analysis of paraffin-embedded human lung cancer tissue slide using 14475-1-AP (GSTA1 antibody) at dilution of 1:400 (under 40x lens. Heat mediated antigen retrieval with Tris-EDTA buffer (pH 9.0).



IP Result of anti-GSTA1 (IP:14475-1-AP, 3ug; Detection:14475-1-AP 1:500) with mouse liver tissue lysate 4000ug.



WB result of GSTA1 antibody (14475-1-AP; 1:3000; incubated at room temperature for 1.5 hours) with sh-Control and sh-GSTA1 transfected HepG2 cells.



Immunofluorescent analysis of (-20°C Methanol) fixed HepG2 cells using GSTA1 antibody (14475-1-AP) at dilution of 1:200 and CoraLite®488-Conjugated AffiniPure Goat Anti-Rabbit IgG(H+L).