

À des fins de recherche uniquement

Anticorps Polyclonal de lapin anti-Calbindin-D28k



Numéro de catalogue: 14479-1-AP

Phare

20 Publications

Informations de base

Numéro de catalogue:

14479-1-AP

Taille:

150ul, Concentration: 300 µg/ml by Nanodrop;

Hôte:

Lapin

Isotype:

IgG

Immunogen Catalog Number:

AG5861

Numéro d'acquisition GenBank:

BC006478

Identification du gène (NCBI):

793

Nom complet:

calbindin 1, 28kDa

MW calculé

30 kDa

MW observés:

28 kDa

Méthode de purification:

Purification par affinité contre l'antigène

Dilutions recommandées:

WB 1:1000-1:8000

IP 0.5-4.0 ug for IP and 1:500-1:2000 for WB

IHC 1:1000-1:4000

IF 1:50-1:500

Applications

Applications testées:

IF, IHC, IP, WB, ELISA

Demandes citées:

IF, IHC, WB

Spécificité de l'espèce:

Humain, rat, souris

Espèces citées:

Humain, rat, souris

Remarque-IHC: il est suggéré de démasquer l'antigène avec un tampon de TE buffer pH 9,0; (*) À défaut, le démasquage de l'antigène peut être effectué avec un tampon citrate pH 6,0.

Contrôles positifs:

WB : tissu cérébral de souris, tissu cérébral de rat, tissu cérébral humain, tissu rénal humain

IP : tissu cérébral de souris,

IHC : tissu de cervelet humain, hippocampe, tissu cérébral humain, tissu de cervelet de rat, tissu de cervelet de souris, tissu rénal de rat, tissu rénal de souris, tissu rénal humain

IF : tissu de cervelet de souris, tissu rénal humain

Informations générales

Calbindin-D28k is a member of the calcium-binding protein superfamily that includes calmodulin and troponin C. It is a cytosolic calcium binding protein highly expressed in the distal tubule, intestines, central nervous system, primary murine osteoblast cells and in several other organs. It plays an important role in the intracellular calcium homeostasis, its strong buffering capacity prevents cytotoxic effect of high concentration of free calcium in kidney, brain, pancreas, and intestine.

Publications notables

Autrice	Pubmed ID	Journal	Application
Takahiro Seki	30342995	Mol Cell Neurosci	IF
Rui Zhang	34762817	Mol Ther	IHC,IF
Biji Mathew	32452260	Autophagy	IF

Stockage

Stockage:

Stocker à -20°C. Stable pendant un an après l'expédition.

Tampon de stockage:

PBS avec azoture de sodium à 0,02 % et glycérol à 50 % pH 7,3

L'aliquotage n'est pas nécessaire pour le stockage à -20C

*** Les 20ul contiennent 0,1% de BSA.

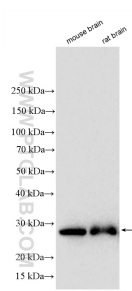
For technical support and original validation data for this product please contact:

T: 1 (888) 4PTGLAB (1-888-478-4522) (toll free in USA), or 1(312) 455-8498 (outside USA)

E: proteintech@ptglab.com
W: ptglab.com

This product is exclusively available under Proteintech Group brand and is not available to purchase from any other manufacturer.

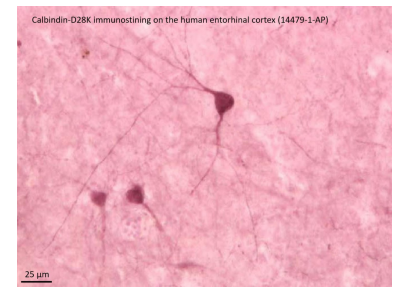
Données de validation sélectionnées



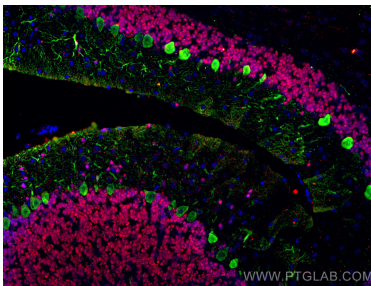
Various lysates were subjected to SDS PAGE followed by western blot with 14479-1-AP (Calbindin-D28k antibody) at dilution of 1:4000 incubated at room temperature for 1.5 hours.



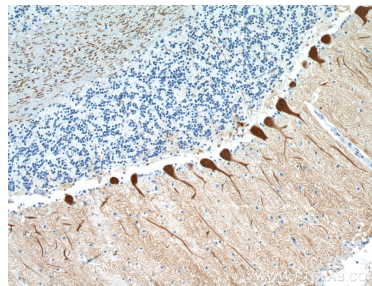
Immunofluorescent analysis of (4% PFA) fixed mouse cerebellum tissue using Calbindin-D28k antibody (14479-1-AP) at dilution of 1:200 and CoraLite®488-Conjugated AffiniPure Goat Anti-Rabbit IgG(H+L), PAX6 antibody (67529-1-Ig, Clone: 2C5A1, red).



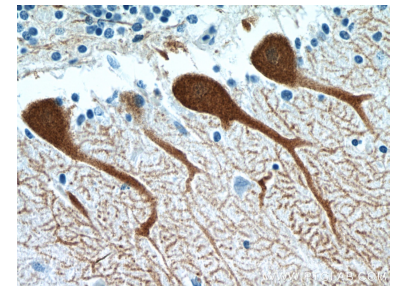
IHC result of Calbindin antibody (14479-1-AP, 1:5000 in 1% BSA 0.3%Tx-100 Tris buffer incubated at 4°C overnight) with freshly formalin fixed human hippocampus (floating section). Secondary antibody biotinylated anti-rabbit IgG 1:200 in 1% BSA 0.3%Tx-100 Tris buffer for 2 hours at room temperature..



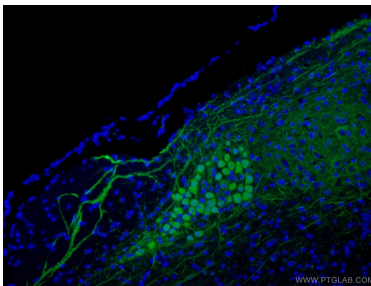
Immunofluorescent analysis of (4% PFA) fixed mouse cerebellum tissue using Calbindin-D28k antibody (14479-1-AP) at dilution of 1:200 and CoraLite®488-Conjugated AffiniPure Goat Anti-Rabbit IgG(H+L), PAX6 antibody (67529-1-Ig, Clone: 2C5A1, red).



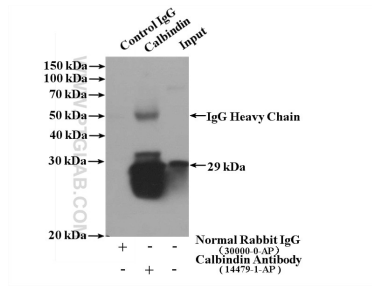
Immunohistochemical analysis of paraffin-embedded human cerebellum tissue slide using 14479-1-AP (Calbindin-D28k antibody) at dilution of 1:2000 (under 10x lens).



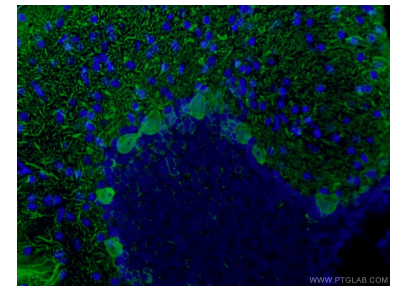
Immunohistochemical analysis of paraffin-embedded human cerebellum tissue slide using 14479-1-AP (Calbindin-D28k antibody) at dilution of 1:2000 (under 40x lens).



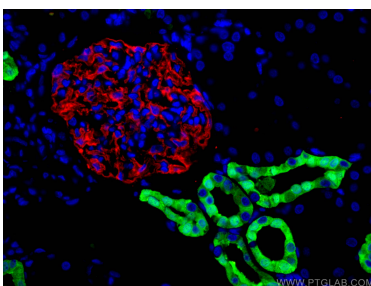
Immunofluorescent analysis of (4% PFA) fixed mouse cerebellum tissue using 14479-1-AP (Calbindin-D28k antibody) at dilution of 1:100 and Alexa Fluor 488-conjugated AffiniPure Goat Anti-Rabbit IgG(H+L).



IP Result of anti-Calbindin-D28k (IP:14479-1-AP, 4µg; Detection:14479-1-AP 1:1000) with mouse brain tissue lysate 4000µg.



Immunofluorescent analysis of (4% PFA) fixed mouse cerebellum tissue using 14479-1-AP (Calbindin-D28k antibody) at dilution of 1:100 and Alexa Fluor 488-conjugated AffiniPure Goat Anti-Rabbit IgG(H+L).



Immunofluorescent analysis of (4% PFA) fixed human kidney tissue using Calbindin-D28k antibody (14479-1-AP) at dilution of 1:200 and CoraLite®488-Conjugated AffiniPure Goat Anti-Rabbit IgG(H+L), PTPRO antibody (67000-1-Ig, Clone: 2F2B4, red).