

À des fins de recherche uniquement

Anticorps Polyclonal de lapin anti-p70(S6K)



Numéro de catalogue: 14485-1-AP

Phare

136 Publications

Informations de base

Numéro de catalogue:

14485-1-AP

Taille:

150ul, Concentration: 500 µg/ml by Nanodrop;

Hôte:

Lapin

Isotype:

IgG

Immunogen Catalog Number:

AG5883

Numéro d'acquisition GenBank:

BC053365

Identification du gène (NCBI):

6198

Nom complet:

ribosomal protein S6 kinase, 70kDa, polypeptide 1

MW calculé

59 kDa

MW observés:

65-75 kDa, 80-85 kDa

Méthode de purification:

Purification par affinité contre l'antigène

Dilutions recommandées:

WB 1:2000-1:8000

IP 0.5-4.0 ug for IP and 1:500-1:2000 for WB

IHC 1:50-1:500

IF 1:10-1:100

Applications

Applications testées:

FC, IF, IHC, IP, WB, ELISA

Demandes citées:

IF, IHC, WB

Spécificité de l'espèce:

Humain, rat, souris

Espèces citées:

Humain, Lapin, porc, rat, souris, Megalobrama Amblycephala

Contrôles positifs:

WB : cellules HEK-293, cellules C6, cellules HeLa, cellules Jurkat, cellules MCF-7 traitées à l'IGF-1, cellules NIH/3T3, cellules PC-12, tissu cérébral de rat, tissu cérébral de souris

IP : cellules HeLa,

IHC : tissu de cancer du foie humain,

IF : cellules HepG2,

Remarque-IHC: il est suggéré de démasquer l'antigène avec un tampon de TE buffer pH 9,0; (*) A défaut, 'le démasquage de l'antigène peut être 'effectué avec un tampon citrate pH 6,0.

Informations générales

RPS6KB1 (Ribosomal protein S6 kinase beta-1) is also named as STK14A, p70 S6KA, and belongs to the S6 kinase subfamily. RPS6KB1 is a major substrate of mTOR and acts as a crucial effector of mTOR signaling pathway. It plays a key role in cell growth and proliferation by regulating INS sensitivity, metabolism, protein synthesis, and cell cycle. RPS6KB1 may play an important role in the progression of HCC and could serve as a potential molecular target for HCC therapy (PMID:22684641). The Rps6kb1 gene encodes the 70 kDa ribosomal protein S6 kinase (p70S6K). The PI3K/mTOR signalling pathway is one of the major mechanisms for controlling cell survival, proliferation, and metabolism and is the central regulator of translation of some components of the protein synthesis system. Due to alternative translation, two isoform S6K1 proteins are known to exist in mammalian cells: p85 S6K1 and p70 S6K1, which is identical to p85 S6K but lacks its first 23 amino acids. In addition, mammalian cells express a second S6K1 isoform spanning 316 amino acids (p31 S6K1).

Publications notables

Autrice	Pubmed ID	Journal	Application
Jing Chen	34650978	Front Cell Dev Biol	WB
Yancun Yin	30310320	Cancer Manag Res	WB
Genquan Yue	31702026	Mol Med Rep	WB

Stockage

Stockage:

Stocker à -20°C. Stable pendant un an après l'expédition.

Tampon de stockage:

PBS avec azoture de sodium à 0,02 % et glycérol à 50 % pH 7,3

L'aliquotage n'est pas nécessaire pour le stockage à -20C

*** Les 20ul contiennent 0,1% de BSA.

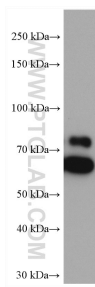
For technical support and original validation data for this product please contact:

T: 1 (888) 4PTGLAB (1-888-478-4522) (toll free in USA), or 1(312) 455-8498 (outside USA)

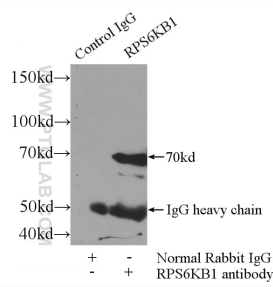
E: proteintech@ptglab.com
W: ptglab.com

This product is exclusively available under Proteintech Group brand and is not available to purchase from any other manufacturer.

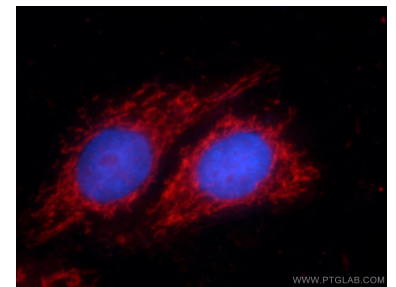
Données de validation sélectionnées



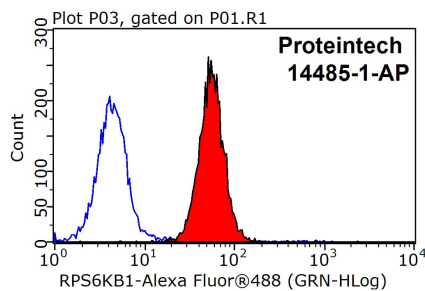
MCF-7 cells were subjected to SDS PAGE followed by western blot with 14485-1-AP (p70(S6K) antibody) at dilution of 1:4000 incubated at room temperature for 1.5 hours.



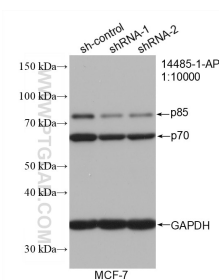
IP Result of anti-p70S6K (IP:14485-1-AP, 3ug; Detection:14485-1-AP 1:1000) with HeLa cells lysate 3000ug.



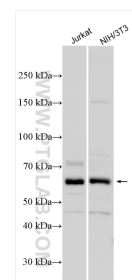
Immunofluorescent analysis of HepG2 cells using 14485-1-AP (p70S6K antibody) at dilution of 1:25 and Rhodamine-Goat anti-Rabbit IgG.



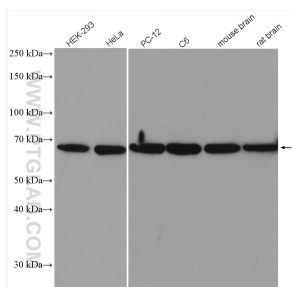
1X10⁶ HepG2 cells were stained with 0.2ug p70S6K antibody (14485-1-AP, red) and control antibody (blue). Fixed with 90% MeOH blocked with 3% BSA (30 min). Alexa Fluor 488-conjugated AffiniPure Goat Anti-Rabbit IgG(H+L) with dilution 1:1500.



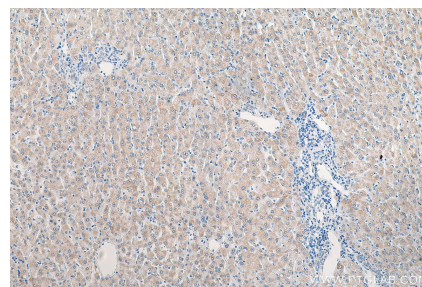
WB result of p70(S6K) antibody (14485-1-AP; 1:10000; incubated at room temperature for 1.5 hours) with sh-Control and sh-p70(S6K) transfected MCF-7 cells.



Various lysates were subjected to SDS PAGE followed by western blot with 14485-1-AP (p70(S6K) antibody) at dilution of 1:6000 incubated at room temperature for 1.5 hours.



Various lysates were subjected to SDS PAGE followed by western blot with 14485-1-AP (p70(S6K) antibody) at dilution of 1:4000 incubated at room temperature for 1.5 hours.



Immunohistochemical analysis of paraffin-embedded human liver cancer tissue slide using 14485-1-AP (p70(S6K) antibody) at dilution of 1:200 (under 10x lens). Heat mediated antigen retrieval with Tris-EDTA buffer (pH 9.0).