

À des fins de recherche uniquement

Anticorps Polyclonal de lapin anti-TSG101



Numéro de catalogue: 14497-1-AP

Phare

197 Publications

Informations de base

Numéro de catalogue:

14497-1-AP

Taille:

150ul, Concentration: 407 µg/ml by Bradford method using BSA as the standard;

Hôte:

Lapin

Isotype:

IgG

Immunogen Catalog Number:

AG5920

Numéro d'acquisition GenBank:

BC002487

Identification du gène (NCBI):

7251

Nom complet:

tumor susceptibility gene 101

MW calculé

44 kDa

MW observés:

46 kDa

Méthode de purification:

Purification par affinité contre l'antigène

Dilutions recommandées:

WB 1:1000-1:5000

IP 0.5-4.0 ug for IP and 1:500-1:1000 for WB

IHC 1:100-1:400

IF 1:10-1:100

Applications

Applications testées:

FC, IF, IHC, IP, WB, ELISA

Demandes citées:

FC, IF, IHC, IP, RIP, WB

Spécificité de l'espèce:

Humain, rat, souris

Espèces citées:

bovin, canin, Humain, porc, rat, souris

Remarque-IHC: il est suggéré de démasquer l'antigène avec un tampon de TE buffer pH 9,0; (*) A défaut, 'le démasquage de l'antigène peut être effectué avec un tampon citrate pH 6,0.

Contrôles positifs:

WB : cellules NIH/3T3, cellules HeLa

IP : cellules HeLa,

IHC : tissu de cancer du côlon humain, tissu cardiaque humain

IF : cellules HeLa,

Informations générales

TSG101(Tumor susceptibility gene 101 protein) is essential for endosomal sorting, membrane receptor degradation and the final stages of cytokinesis. It plays a crucial role for cell proliferation and cell survival. TSG101 has been identified as a candidate tumor suppressor gene and belongs to the ubiquitin-conjugating enzyme family. TSG101 is a marker for exosome. This protein has 2 isoforms produced by alternative splicing with the molecular mass of 44 and 32 kDa.

Publications notables

Autrice	Pubmed ID	Journal	Application
Kristien Peeters	27686364	Ann Neurol	WB
Qiyun Yang	32986908	Andrologia	WB
Xin Xing	34592398	Int J Pharm	WB

Stockage

Stockage:

Stocker à -20°C. Stable pendant un an après l'expédition.

Tampon de stockage:

PBS avec azoture de sodium à 0,02 % et glycérol à 50 % pH 7,3

L'aliquotage n'est pas nécessaire pour le stockage à -20C

*** Les 20ul contiennent 0,1% de BSA.

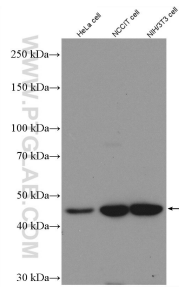
For technical support and original validation data for this product please contact:

T: 1 (888) 4PTGLAB (1-888-478-4522) (toll free in USA), or 1(312) 455-8498 (outside USA)

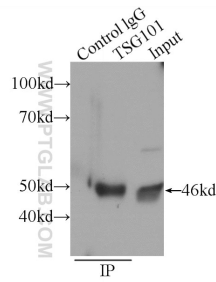
E: proteintech@ptglab.com
W: ptglab.com

This product is exclusively available under Proteintech Group brand and is not available to purchase from any other manufacturer.

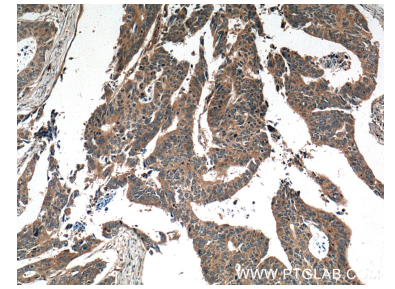
Données de validation sélectionnées



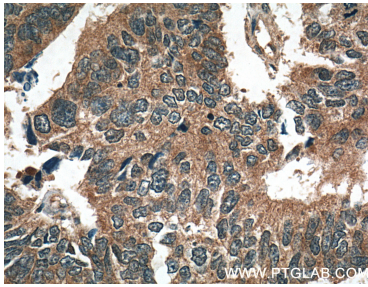
Various lysates were subjected to SDS PAGE followed by western blot with 14497-1-AP (TSG101 antibody) at dilution of 1:1000 incubated at room temperature for 1.5 hours.



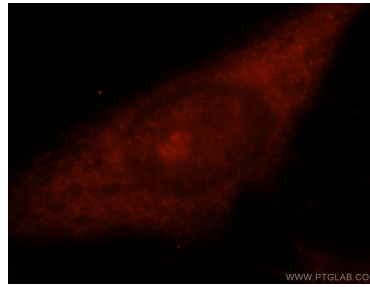
IP Result of anti-TSG101 (IP:14497-1-AP, 3ug; Detection:14497-1-AP 1:500) with HeLa cells lysate 1320ug.



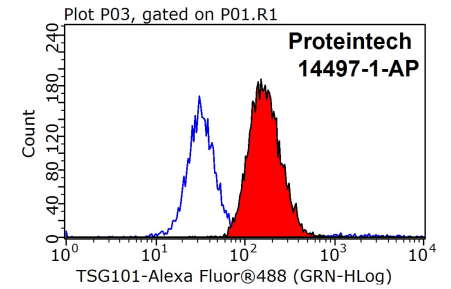
Immunohistochemical analysis of paraffin-embedded human colon cancer tissue slide using 14497-1-AP (TSG101 Antibody) at dilution of 1:200 (under 10x lens). Heat mediated antigen retrieval with Tris-EDTA buffer (pH 9.0).



Immunohistochemical analysis of paraffin-embedded human colon cancer tissue slide using 14497-1-AP (TSG101 Antibody) at dilution of 1:200 (under 40x lens). Heat mediated antigen retrieval with Tris-EDTA buffer (pH 9.0).



Immunofluorescent analysis of HeLa cells, using TSG101 antibody 14497-1-AP at 1:25 dilution and Rhodamine-labeled goat anti-rabbit IgG (red).



1X10⁶ HeLa cells were stained with 0.2ug TSG101 antibody (14497-1-AP, red) and control antibody (blue). Fixed with 90% MeOH blocked with 3% BSA (30 min). Alexa Fluor 488-conjugated AffiniPure Goat Anti-Rabbit IgG(H+L) with dilution 1:1000.